

Java™ APIs for Bluetooth™ Wireless Technology (JSR 82)

Specification Version 1.1.1

Java™ 2 Platform, Micro Edition

Motorola
Mobile Devices Software
6500 River Place Blvd, Building 7
MD: RP-2A
Austin, TX 78730

1.1.1, 29 July, 2008

Java and Java-based trademarks and logos are trademarks of Sun Microsystems, Inc.

Bluetooth is a trademark owned by Bluetooth SIG, Inc.

All other trademarks are the property of their respective owners.

© Sun Microsystems, Inc., 2001, 2002. All rights reserved.

CONTENTS

<i>Preface</i>	<i>ix</i>
Revision History	ix
Who Should Use This Specification	ix
How This Specification Is Organized	ix
Chapter 1	<i>Introduction and Background</i>..... 11
1.1	Introduction..... 11
1.2	Background 11
1.2.1	Bluetooth Specification.....11
1.2.2	JSR 82 Expert Group12
1.3	Document Conventions..... 12
1.4	Formatting Conventions..... 13
Chapter 2	<i>Goals, Requirements, and Scope</i> 14
2.1	Goals..... 14
2.2	Requirements 14
2.2.1	Specification Definition Requirements14
2.2.2	Device Requirements15
2.2.3	Bluetooth System Requirements15
2.2.4	Usage Cases15
2.3	Scope 16
Chapter 3	<i>Architecture</i>..... 18
3.1	Overview 18
3.2	Overview of Bluetooth Protocol Stack 18
3.3	Architecture of the API 20
3.3.1	Packages.....21
3.3.2	MIDP and Bluetooth API.....21
3.3.3	Bluetooth Control Center.....22
3.3.3.1	BCC and Security Mode22
3.3.3.2	BCC Features23
3.3.4	Device Properties23
3.3.5	Client and Server Model24
3.3.6	Power Management26
PART A – DISCOVERY	27
Chapter 4	<i>Device Discovery</i> 28
4.1	Introduction..... 28
4.2	Device Discovery Classes..... 28
4.2.1	interface javax.bluetooth.DiscoveryListener28
4.2.2	class javax.bluetooth.DiscoveryAgent.....28

Chapter 5	<i>Service Discovery</i>	30
5.1	Introduction	30
5.2	API Overview	30
5.3	Service Discovery Classes	30
5.3.1	class javax.bluetooth.UUID	31
5.3.2	class javax.bluetooth.DataElement	31
5.3.3	interface javax.bluetooth.ServiceRecord	31
5.3.4	class javax.bluetooth.DiscoveryAgent.....	31
5.3.5	interface javax.bluetooth.DiscoveryListener	32
5.4	Example Code	32
Chapter 6	<i>Service Registration</i>	43
6.1	Introduction	43
6.2	Responsibilities for Service Registration	43
6.3	Connect-Anytime Services	44
6.4	Connectable and Non-Connectable Modes	45
6.5	Classes	46
6.5.1	interface javax.bluetooth.ServiceRecord	46
6.5.2	class javax.bluetooth.LocalDevice.....	47
6.5.3	class javax.bluetooth.ServiceRegistrationException extends java.io.IOException	48
PART B – DEVICE MANAGEMENT		49
Chapter 7	<i>Generic Access Profile</i>	50
7.1	Introduction	50
7.2	GAP Classes	50
7.2.1	class javax.bluetooth.LocalDevice.....	50
7.2.2	class javax.bluetooth.RemoteDevice	50
7.2.3	class javax.bluetooth.BluetoothStateException extends java.io.IOException	50
7.2.4	class javax.bluetooth.DeviceClass	51
Chapter 8	<i>Security</i>	52
8.1	Introduction	52
8.2	Security Requests in the Connection String	52
8.2.1	Server Requests for Authentication	52
8.2.2	Server Requests for Encryption	53
8.2.3	Server Requests for Authorization.....	54
8.2.4	Server Requests for Master Role	54
8.2.5	Client Requests in the Connection String	55
8.3	Security Classes	57
8.3.1	class javax.bluetooth.RemoteDevice	57
8.4	Server Application Security	57
8.5	Client Application Security	58
8.6	Security Changes After Connection Establishment	59

Chapter 9	<i>MIDP 2.0 Security</i>	63
9.1	Introduction	63
9.2	Bluetooth Permissions	63
<i>PART C – COMMUNICATION</i>		65
Chapter 10	<i>Serial Port Profile</i>	66
10.1	Introduction	66
10.2	API Overview	66
10.3	SPP Server and Client Connection URLs	66
10.4	Serial Port Service Registration	67
10.5	Connection Establishment	68
10.5.1	Server Connection Establishment	68
10.5.2	Client Connection Establishment.....	70
10.6	SPP Service Records	70
10.6.1	SPP Service Record Modification.....	73
10.6.2	Restrictions on Modifying Service Records	74
10.6.3	Device Service Classes	75
10.7	Example Code	76
10.7.1	Client Application.....	76
10.7.2	Server Application	77
10.7.3	Service Record Modification	78
Chapter 11	<i>Logical Link Control and Adaptation Protocol (L2CAP)</i>	83
11.1	Introduction	83
11.2	API Overview	83
11.2.1	Channel Configuration.....	84
11.2.1.1	Maximum Transmission Unit (MTU).....	85
11.3	L2CAP Connection Interface	86
11.3.1	L2CAP Server and Client Connection URLs	86
11.3.2	L2CAP Service Record.....	89
11.4	L2CAP Connection Classes	91
11.4.1	interface javax.bluetooth.L2CAPConnection extends javax.microedition.io.Connection.....	91
11.4.2	interface javax.bluetooth.L2CAPConnectionNotifier extends javax.microedition.io.Connection	91
11.4.3	class javax.bluetooth.BluetoothConnectionException extends java.io.IOException.....	92
11.5	Example Code	92
11.5.1	Client Application.....	92
11.5.2	Server Application	94
Chapter 12	<i>Object Exchange Protocol (OBEX)</i>	95
12.1	Introduction	95
12.2	OBEX Overview	95
12.3	API Overview	96
12.3.1	Client Connection	98

12.3.2	Server Connection.....	99
12.4	Connection String Description.....	99
12.4.1	OBEX Over RFCOMM	100
12.4.2	OBEX Over TCP/IP.....	101
12.4.3	OBEX Over IrDA	102
12.4.3.1	Device Discovery Identifier.....	102
12.4.3.2	Target Identifier for OBEX Servers.....	103
12.4.3.3	Service Identification.....	103
12.4.4	OBEX Server and Client Connection URLs.....	103
12.5	Authentication.....	106
12.6	OBEX Classes.....	107
12.6.1	interface javax.obex.ClientSession extends javax.microedition.io.Connection.....	107
12.6.2	interface javax.obex.HeaderSet	107
12.6.3	class javax.obex.ResponseCodes	107
12.6.4	class javax.obex.ServerRequestHandler	107
12.6.5	interface javax.obex.SessionNotifier extends javax.microedition.io.Connection.....	107
12.6.6	interface javax.obex.Operation extends javax.microedition.io.ContentConnection	108
12.6.7	interface Authenticator.....	108
12.6.8	class PasswordAuthentication.....	108
12.7	Example Code	108
12.7.1	Client Application.....	108
12.7.2	Server Application	111
APPENDICES		113
Appendix A - JSR 82 & MIDP 2.0 PushRegistry		114
A.1	Introduction.....	114
A.2	PushRegistry Registration Parameters.....	114
A.2.1	ConnectionURL Parameter	114
A.2.2	AllowedSender Parameter.....	114
A.3	Registration Rules.....	116
A.4	Opening of Registered Bluetooth Connections by MIDlets.....	117
A.4.1	By MIDlets Belonging to Same MIDlet Suite	117
A.4.2	By MIDlets Belonging to Other MIDlet Suites	118
A.5	Removal of Bluetooth Connection from PushRegistry.....	118
A.6	SDP Service Record of Registered Bluetooth Connection.....	118
A.6.1	Creation and Placement to SDDB.....	118
A.6.2	Update.....	119
A.6.3	Disable Conditions.....	119
A.6.4	Removal	120
A.7	Bluetooth Service Class Bits.....	120
A.8	Registration URL's Optional Parameters	121
A.9	Acceptance of Registered Bluetooth Connections by JAM.....	121
A.10	Rejection of Connections to Registered Endpoint by JAM.....	122
A.10.1	Connection Initiator Fails to Pass AllowedSender Filter	122
A.10.2	Requests in Registered URL Cannot be Fulfilled	122

A.11	MIDlet Auto-Invocation	122
A.11.1	Information in Auto-Launch Confirmation Query.....	122
A.11.2	Combining Several Push-Related User Interactions into One	123
A.11.3	“Application Auto Invocation” permission set to “Not Allowed”	123
A.12	Interplay between Push MIDlet and JAM.....	123
A.13	Buffering of Data by JAM.....	127
Appendix B – Blocking/Non-Blocking Methods		128
References	129	

LIST OF TABLES

<i>Table P-1 Revision History</i>	<i>ix</i>
<i>Table 1-1 RFC 2119 Definitions</i>	<i>12</i>
<i>Table 1-2 Document Formatting Conventions</i>	<i>13</i>
<i>Table 3-1 Protocols and Layers in the Bluetooth Protocol Stack</i>	<i>18</i>
<i>Table 3-2 Device Properties.....</i>	<i>24</i>
<i>Table 10-1 Service Record Template for SPP-based Services</i>	<i>71</i>
<i>Table 11-1 Service Record Template for L2CAP-based Services</i>	<i>90</i>
<i>Table 12-1 OBEX Headers in the OBEX API.....</i>	<i>97</i>
<i>Table 12-2 Service Record Template for GOEP-based Services</i>	<i>100</i>

LIST OF FIGURES

<i>Figure 3-1 Bluetooth Protocol Stack</i>	19
<i>Figure 3-2 Bluetooth Version 1.1 Profiles from [2]</i>	20
<i>Figure 3-3 Functionality Provided by this Specification</i>	20
<i>Figure 3-4 Package Structure</i>	21
<i>Figure 3-5 CLDC+MIDP+Bluetooth Architecture Diagram</i>	22
<i>Figure 6-1 Server Application and Implementation Collaboration for Service Registration</i>	45
<i>Figure 6-2 A Server Provides a Service Record That Enables Clients to Connect</i>	47
<i>Figure 11-1 L2CAP in the Generic Connection Framework</i>	84
<i>Figure 12-1 OBEX in the Generic Connection Framework</i>	96

Preface

This document, *Java™ APIs for Bluetooth™ Wireless Technology (JSR 82)*, is the definition of the APIs for Bluetooth¹ wireless technology for Java™ 2 Platform, Micro Edition (J2ME™).

Revision History

Table P-1 Revision History

Version	Date	Comments
0.1	12/31/2000	First draft release
0.2	03/11/2001	Second draft for EG meeting (3/14-3/16)
0.3	04/18/2001	Suggestions/changes from March meeting
0.4	05/20/2001	L2CAP, OBEX, Device discovery, Server applications and incorporated comments from 0.3
0.5	08/29/2001	Comments from EG meeting (6/19-6/20) and several phonecons. OBEX, Service registration, L2CAP and Security were redesigned
0.6	09/30/2001	Comments from EG phonecons and extended EG comments. Object push deleted. Some rework to the other chapters
0.7	10/10/2001	Comments from the EG, updated with UML diagrams.
0.8	10/11/2001	Community Review
0.9	11/28/2001	Changes from Community Review. Public review
0.95	01/18/2002	Changes from Public Review. Proposed final version
1.0	02/14/2002	Final Release
1.0a	04/05/2002	Fixed typos
1.1	09/02/2005	Maintenance Release incorporating JSR 248 clarifications and PushRegistry
1.1.1 – Proposed	03/06/2008	Maintenance Release to fix errors in the 1.1 specification and added clarifications to common spec questions.
1.1.1	07/29/2008	Changed version of obex.api.version and bluetooth.api.version to 1.1.1 and fixed errors in ClientSession.put() and ClientSession.get() function descriptions.

Who Should Use This Specification

The intended audience for this document is the Java Community Process (JCP) expert group defining these APIs, implementers of these APIs and application developers targeting these APIs.

How This Specification Is Organized

The topics in this specification are organized as follows:

¹ Bluetooth is a trademark owned by Bluetooth SIG, Inc.

Chapter 1, “Introduction and Background,” provides a context for the *Java APIs for Bluetooth Wireless Technology Specification* and lists the names of the companies that have been involved in the specification work.

Chapter 2, “Goals, Requirements and Scope,” defines the goals, special requirements and scope of this specification.

Chapter 3, “Architecture of the Java Bluetooth API,” provides an overview of Bluetooth wireless technology and defines the high-level architecture of this specification.

Part A, “DISCOVERY,” covers chapters 4, 5 and 6.

Chapter 4, “Device Discovery,” defines the APIs for Bluetooth device discovery.

Chapter 5, “Service Discovery,” defines the APIs for service search and service record retrieval.

Chapter 6, “Service Registration,” defines the APIs for registering services.

Part B, “DEVICE MANAGEMENT,” covers chapters 7 and 8.

Chapter 7, “Generic Access Profile,” defines the APIs for the Generic Access Profile (GAP) and link management.

Chapter 8, “Security,” defines the APIs to obtain secure communication.

Part C, “COMMUNICATION,” covers chapters 9,10 and 11.

Chapter 9, “Serial Port Profile,” defines the APIs for making RFCOMM connections.

Chapter 10, “Logical Link Control and Adaptation Protocol (L2CAP),” defines the APIs for making L2CAP connections.

Chapter 11, “Object Exchange Protocol (OBEX),” defines the architecture and the APIs for making OBEX connections.

Chapter 1 Introduction and Background

1.1 Introduction

This document, produced as a result of Java Specification Request 82 (JSR 82), defines the optional package for Bluetooth wireless technology for Java 2 Platform, Micro Edition (J2ME). The goal of this specification is to define the architecture and the associated APIs required to enable an open, third party Bluetooth application development environment.

This API is designed to operate on top of the Connected, Limited Device Configuration (CLDC), which is described in *Connected, Limited Device Configuration (JSR 30)* or *Connected, Limited Device Configuration 1.1 (JSR 139)*, Sun Microsystems, Inc. This API is an optional package that can be used to extend the capability of a J2ME profile, such as the Mobile Information Device Profile (JSR 118) [5].

Because this API is based on CLDC, the reader is assumed to have some familiarity with the CLDC specification and the Generic Connection Framework (GCF) described therein.

1.2 Background

1.2.1 Bluetooth Specification

The specification for Bluetooth wireless communications is developed by the Bluetooth Special Interest Group (SIG) led by promoter companies 3Com, Ericsson, Intel, IBM, Agere, Microsoft, Motorola, Nokia and Toshiba. The Bluetooth specification is available from the SIG's web site, <http://www.bluetooth.org/spec>. The Bluetooth specification defines protocols and application profiles but does not define any APIs.

The JSR 82 specification defines APIs that can be used to exercise certain Bluetooth protocols defined in the Bluetooth specification volume 1 [1], and certain profiles defined in the Bluetooth specification volume 2 [2]. Those profiles are listed in Section 2.3. This API is defined in such a way as to make it possible for additional and future profiles to be built on top of this API. This assumes that future changes to the Bluetooth specification remain compatible with this API. This API is based on the Bluetooth specification version 1.1. However, nothing in this specification is intended to preclude operating with version 1.0 compliant stacks or hardware. In addition, if future versions are backward compatible with version 1.1, then implementations of this specification should operate on those versions of stacks or hardware as well.

1.2.2 JSR 82 Expert Group

This specification was produced by the Expert Group formed to define the Java APIs for Bluetooth wireless technology. The following companies, listed in alphabetical order, are members of this expert group:

- Extended Systems
- IBM
- Mitsubishi Electric
- Motorola (specification lead)
- Newbury Networks
- Nokia
- Parthus Technologies
- Research in Motion
- Rococo Software
- Sharp Laboratories of America
- Sony Ericsson Mobile Communications
- Smart Fusion
- Smart Network Devices
- Sun Microsystems
- Symbian
- Telecordia
- Vaultus
- Zucotto

Three members participated as individual members. They are Peter Dawson, Steven Knudsen and Brad Threatt.

1.3 Document Conventions

This document uses definitions based upon those specified in RFC 2119 [10].

Table 1-1 RFC 2119 Definitions

Term	Definition
MUST SHALL REQUIRED	The associated definition is an absolute requirement of the specification.
MUST NOT SHALL NOT	The associated definition is an absolute prohibition of the specification.

Term	Definition
SHOULD RECOMMENDED	Indicates that there exist valid reasons in particular circumstances to ignore the associated definition, but the full implications must be understood and carefully weighed before choosing a different course. The associated definition is a recommended practice.
SHOULD NOT	Indicates that there may exist valid reasons in particular circumstances when the associated definition or behavior is acceptable, but the full implications should be understood and the case carefully weighed before implementing the definition or behavior. The associated definition or behavior is not recommended.
MAY OPTIONAL	The associated definition is truly optional.

The term *application* in this document is intended to represent only those applications written in the Java programming language that use these APIs specified by JSR 82 through the Java Community Process.

1.4 Formatting Conventions

This specification uses the following formatting conventions:

Table 1-2 Document Formatting Conventions

Convention	Description
Courier New	Used in code examples
Times New Roman	Used for text
Arial	Used for tables

Chapter 2 Goals, Requirements, and Scope

2.1 Goals

The overall goal of this specification is to define a standard set of APIs that will enable an open, third-party application development environment for Bluetooth wireless technology. The API is targeted mainly at devices that are limited in processing power and memory, and are primarily battery-operated. These devices may be manufactured in large quantities, meaning that low cost and low power consumption will be primary goals of the manufacturers. The API definition takes these factors into consideration.

The Bluetooth specification continues to grow as new profiles are added. The intent of this specification's design is such that new Bluetooth profiles can be built on top of this API using the Java programming language, as long as the core layer specification does not change. To promote future expansion and flexibility, this specification is not restricted only to APIs that implement Bluetooth profiles, although there are APIs for some Bluetooth profiles, as seen in subsequent chapters. Future Bluetooth profiles are being built on top of Object Exchange Protocol (OBEX) and Logical Link Control and Adaptation Protocol (L2CAP), so APIs for OBEX and L2CAP protocols are provided to enable these future profiles to be implemented in the Java programming language. Detailed information on Bluetooth profiles and the relationship to the protocols such as OBEX and L2CAP are given in [1] and [2].

2.2 Requirements

The requirements listed in this chapter are additional requirements beyond those found in *Connected, Limited Device Configuration (JSR 30)*, Sun Microsystems, Inc [3].

2.2.1 Specification Definition Requirements

The requirements of this specification are:

1. Require only CLDC libraries.
2. Scalability – It should be able to run on any Java 2 platform that supplies the Generic Connection Framework (GCF), including any current J2ME profile.
3. OBEX API definition must be independent of Bluetooth protocols. By contrast, applications written using the Bluetooth API are expected to run only on platforms that incorporate Bluetooth wireless technology.
4. Applications may use the OBEX API without using the Bluetooth API.
5. APIs that could allow applications to accidentally interfere with other applications or cause protocol violations should be avoided or delegated to a system control or system monitoring mechanism.

6. The API should allow applications to be both a client and a server. See Section 2.2.4.
7. The specification should allow for the possibility of building Bluetooth profiles on top of the L2CAP and OBEX APIs.

This specification shall produce two optional packages; hence, two different Technology Compatibility Kits (TCKs) will be produced.

2.2.2 Device Requirements

This API is designed to operate on devices characterized as follows:

- 512K minimum total memory available for Java 2 platform (ROM/Flash and RAM). Application memory requirements are additional.
- Bluetooth communication hardware, with necessary Bluetooth stack and radio. See Section 2.2.3 for more detailed requirements
- Compliant implementation of the J2ME Connected Limited Device Configuration or a superset of CLDC APIs, such as the J2ME Connected Device Configuration (CDC) [4].

2.2.3 Bluetooth System Requirements

The requirements of the underlying Bluetooth system upon which this API will be built are:

- The underlying system shall be “Qualified” in accordance with the Bluetooth Qualification Program for at least the Generic Access Profile, Service Discovery Application Profile and Serial Port Profile.
- The following layers are supported as defined in the Bluetooth specification version 1.1, and the implementation of this API has access to them.
 - Service Discovery Protocol (SDP)
 - RFCOMM (type 1 device support)
 - Logical Link Control and Adaptation Protocol (L2CAP)
- An entity called the Bluetooth Control Center (BCC) is provided by the system. The BCC is a “control panel”-like application that allows a user or an Original Equipment Manufacturer (OEM) to define specific values for certain configuration parameters in a stack. The details of the BCC are discussed in Section 3.3.3.

OBEX support can be provided in the underlying Bluetooth system or by the implementation of this API.

2.2.4 Usage Cases

Peer-to-Peer Networking:

Peer-to-peer networking can be defined and interpreted in many ways. For the purpose of this specification, a peer-to-peer network is a network between two or more devices where each device can be

both a server and a client. The API specified in this document should allow such capability when the network is formed using Bluetooth wireless technology. An example of a peer-to-peer network application is a game played between two devices connected through Bluetooth communications.

The devices involved can belong to entirely different device classes (for example, a phone and a PDA), using different hardware and operating systems. If these devices are Java-technology-enabled then the software games can be written once in the Java programming language and run on all of these devices. In addition, the device independence of these Bluetooth applications makes it possible to share and download them to different devices.

Kiosk:

It is impractical for a kiosk that sells software to store different executables for the various Bluetooth devices that will be manufactured. With this API, an application or a Bluetooth game can be written once, and purchased and executed on all Bluetooth devices that have implemented this API. This capability enables establishments such as airports, train stations and malls to have custom applications that work best in their environment. Bluetooth devices that have this API implemented can download these custom applications from kiosks.

Buying Soda and Bluetooth Applications Through Vending Machines:

Another example where this API can provide benefit is a scenario where people purchase or download Bluetooth applications to their Bluetooth device while using the same device to purchase a soda from a vending machine. This API allows applications to be written once and run on many different Bluetooth platforms. The vending machine stores these applications and transfers them via Bluetooth transports. A game manufacturer might buy advertising space on vending machines to house their sample game. Customers purchasing soda could be given the option to download a free sample game, which can be upgraded later by purchasing the game.

This API will help to create more applications, which can foster the success of Bluetooth wireless technology.

2.3 Scope

The Bluetooth specification covers many layers and profiles and it is not possible to include all of them in this API. Rather than try to address all of them, this specification prioritizes API function based on size requirements and the breadth of usage of the API. This specification addresses the following areas:

1. Data transmissions only (Bluetooth wireless technology supports both data and voice transmissions)
2. The following protocols:
 - L2CAP (connection-oriented only)
 - RFCOMM
 - SDP
 - OBject Exchange protocol (OBEX)
3. The following profiles:

- Generic Access Profile (GAP)
- Service Discovery Application Profile (SDAP)
- Serial Port Profile (SPP)
- Generic Object Exchange Profile (GOEP)

The specification does not address nor provide APIs for the following:

1. Audio (voice) transmissions
2. Telephony Control Protocol – Binary (TCS Binary or TCS-BIN)

The API is intended to provide the following capabilities:

1. Register services
2. Discover devices and services
3. Establish RFCOMM, L2CAP and OBEX connections
4. Conduct these activities in a secure fashion

The following are outside the scope of this specification, but the specification does not prevent the implementation of these capabilities:

1. **Layer management:** Many aspects of device management are system-specific and are difficult to standardize, such as power modes, park mode and so on.
2. **Downloading and storing applications:** These features are implementation-specific and therefore are not defined in this specification. Over-the-air provisioning is being addressed in other JSRs (JSR 37 and JSR 118).
3. **Asynchronous start of applications:** Methods by which an application can be started asynchronously because of external requests are not addressed by this specification itself. However, JSR 118 (MIDP 2.0) [5] defines PushRegistry for this purpose. This specification includes an appendix (Appendix A) that describes requirements for implementations that support JSR 82 connect-anytime services using PushRegistry.

Chapter 3 Architecture

3.1 Overview

This chapter addresses issues that both implementers and developers will encounter when implementing and using the *Java APIs for Bluetooth Wireless Technology*.

3.2 Overview of Bluetooth Protocol Stack

This section provides a brief overview of the Bluetooth protocol stack. For more details on the protocol stack and other parts of Bluetooth wireless technology, refer to the Bluetooth specifications available from the Bluetooth SIG's web site, <http://www.bluetooth.org/spec>. The Bluetooth protocol stack can be broadly divided into two components: the Bluetooth host and the Bluetooth controller (or Bluetooth radio module). The Host Controller Interface (HCI) provides a standardized interface between the Bluetooth host and the Bluetooth controller (radio module).

Figure 3-1 shows the block diagram of the Bluetooth protocol stack. The protocol stack is composed of protocols that are specific to Bluetooth wireless technology, such as L2CAP and SDP, and other adopted protocols such as OBEX. The Bluetooth protocol stack can be divided into four layers according to their purpose as shown in Table 3-1.

Table 3-1 Protocols and Layers in the Bluetooth Protocol Stack

Protocol Groups	Protocols in the Stack
Bluetooth Core Protocols	Baseband, Link Manager Protocol, L2CAP and SDP
Cable Replacement Protocol	RFCOMM
Telephony Control Protocol	TCS Binary
Adopted Protocols	PPP, UDP/TCP/IP, OBEX, WAP

The baseband layer enables the physical RF link between Bluetooth units making a connection. Link Manager Protocol (LMP) is responsible for link set-up between Bluetooth devices and managing security aspects such as authentication and encryption. L2CAP adapts upper-layer protocols to the baseband. It multiplexes between the various logical connections made by the upper layers. Audio data typically is routed directly to and from the baseband and does not go through L2CAP. SDP is used to query device information, services and characteristics of services. RFCOMM emulates RS-232 control and data signals over the Bluetooth baseband, providing transport capabilities for upper level services that use a serial interface as a transport mechanism. TCS Binary defines the call control signaling for the establishment of voice and data calls between Bluetooth devices.

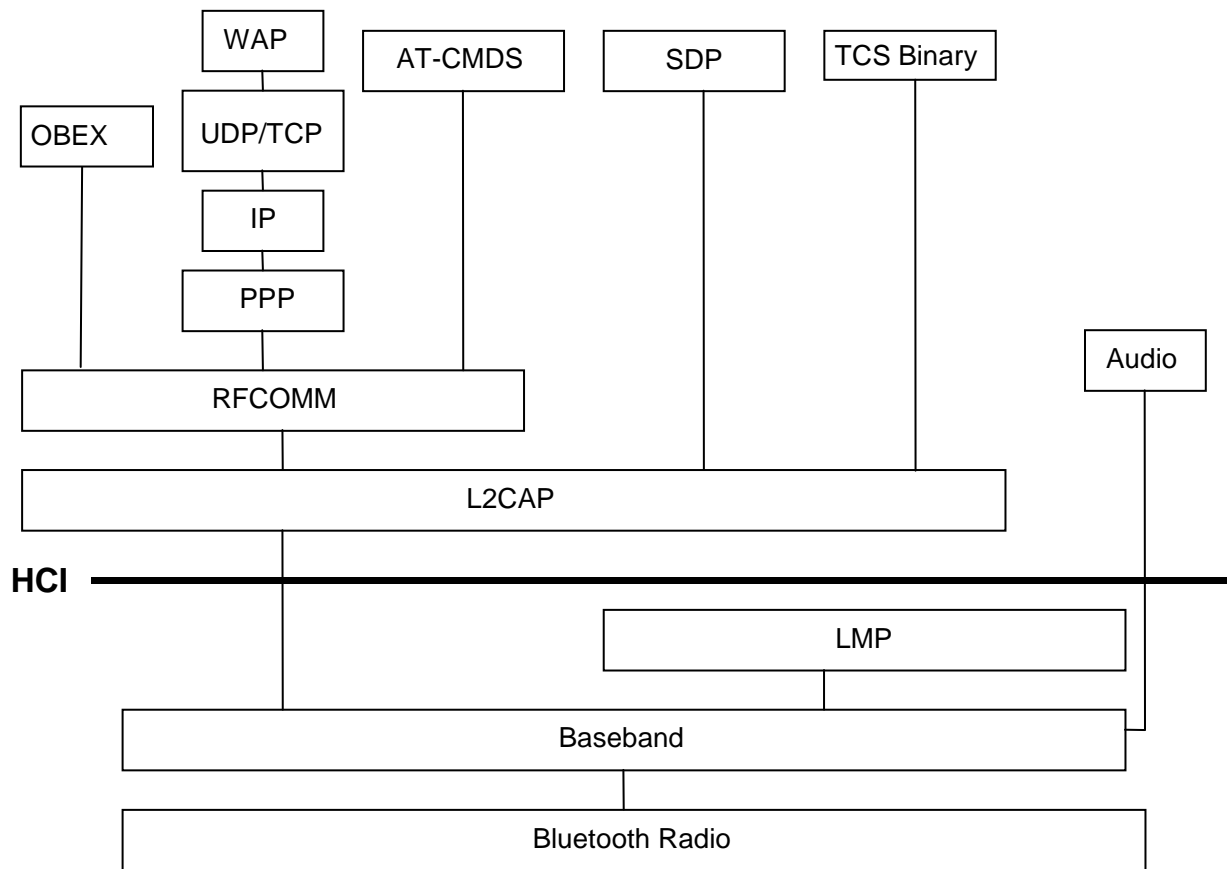


Figure 3-1 Bluetooth Protocol Stack

In addition to the protocols, the Bluetooth SIG has defined Bluetooth Profiles. A Bluetooth Profile defines standard ways to use selected protocols and protocol features that enable a particular usage model. A Bluetooth device may support one or more profiles. The four “generic” profiles are the Generic Access Profile (GAP), the Serial Port Profile (SPP), the Service Discovery Application profile (SDAP), and the Generic Object Exchange Profile (GOEP). These profiles are addressed by this specification. Figure 3-2 shows the relationships among the various Bluetooth profiles. As an example, the File Transfer Profile is built on top of GOEP, which depends on the SPP, which is built upon GAP.

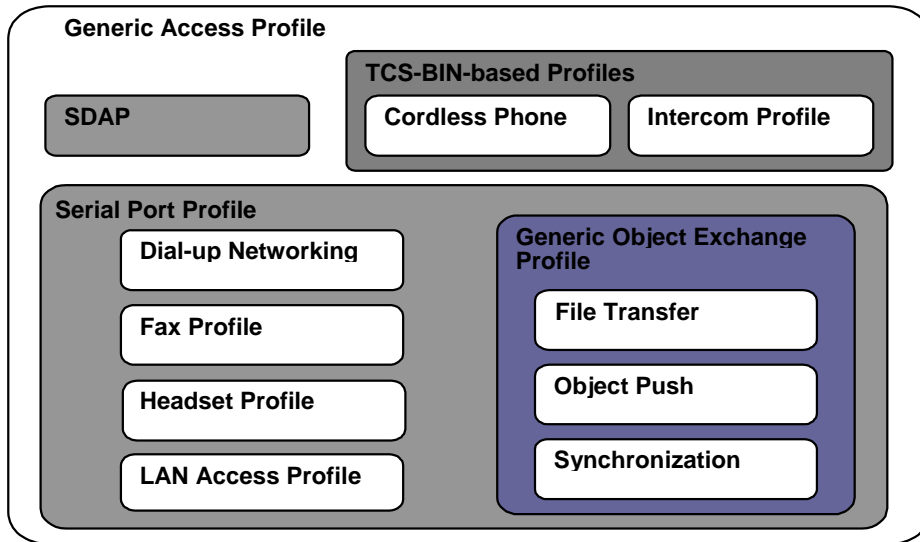


Figure 3-2 Bluetooth Version 1.1 Profiles from [2]

3.3 Architecture of the API

Section 2.3 defined the scope of this specification. Based on that scope, the functionality addressed by this specification can be classified into three major categories:

1. Discovery
2. Communication
3. Device Management

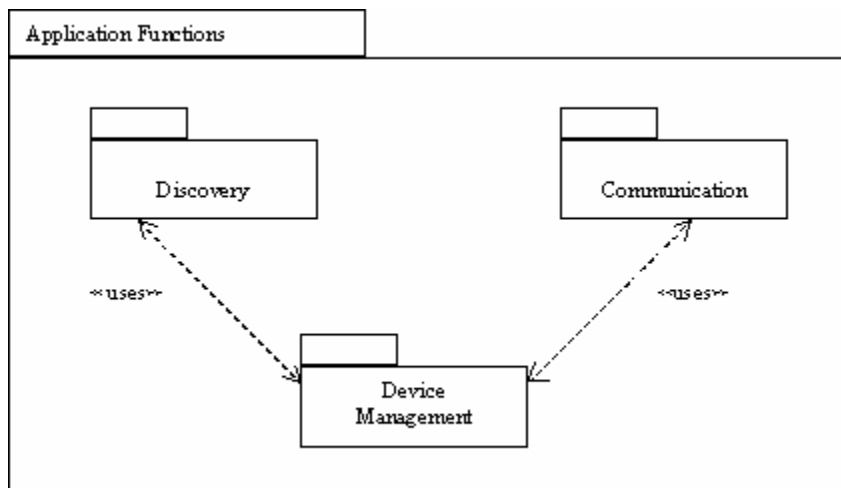


Figure 3-3 Functionality Provided by this Specification

Discovery includes device discovery, service discovery and service registration. Communication includes establishing connections between devices and using those connections for Bluetooth communication between applications. Device management allows for managing and controlling these connections. This specification is organized into these three functional categories. APIs for these functional categories are defined in this specification.

3.3.1 Packages

The following two packages are defined:

1. javax.bluetooth
2. javax.obex

As stated in the previous chapter, the OBEX API is defined independently of the Bluetooth transport layer and is packaged separately. Each of the above packages represents separate optional packages, implying that a CLDC implementation can include either of the two packages or both of them. The first package is the core Bluetooth API and the second package contains the APIs for OBEX. There will be two Technology Compatibility Kits (TCKs), one to test the Bluetooth API and another to test the OBEX API. The TCK is the suite of tests, tools and documentation that allows implementers of this specification to determine if their implementation is compliant with this specification.

Figure 3-4 shows the package structure. The javax.obex and javax.bluetooth packages depend on the javax.microedition.io package.

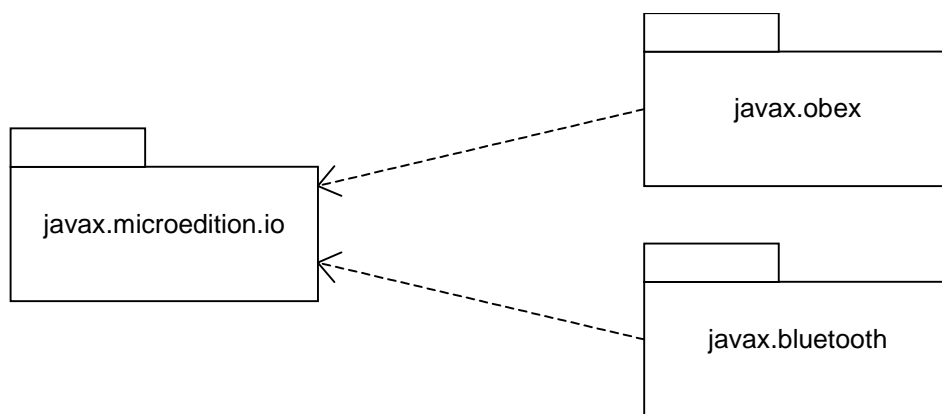


Figure 3-4 Package Structure

3.3.2 MIDP and Bluetooth API

Mobile Information Device Profile (MIDP) [5] devices are expected to be the most prevalent class of devices to incorporate this specification, and the specification allows for the coexistence of MIDP and Bluetooth APIs. Figure 3-5 gives an example of where the APIs defined in this specification fit in a CLDC+MIDP architecture. The Bluetooth API and the MIDP APIs can coexist in a “MIDP+Bluetooth” device but do not depend on each other’s APIs, except for those implementations that include Bluetooth

PushRegistry (see Appendix A). In a “CLDC+Bluetooth” device, the MIDP portions of this diagram (including Bluetooth PushRegistry) will not exist.

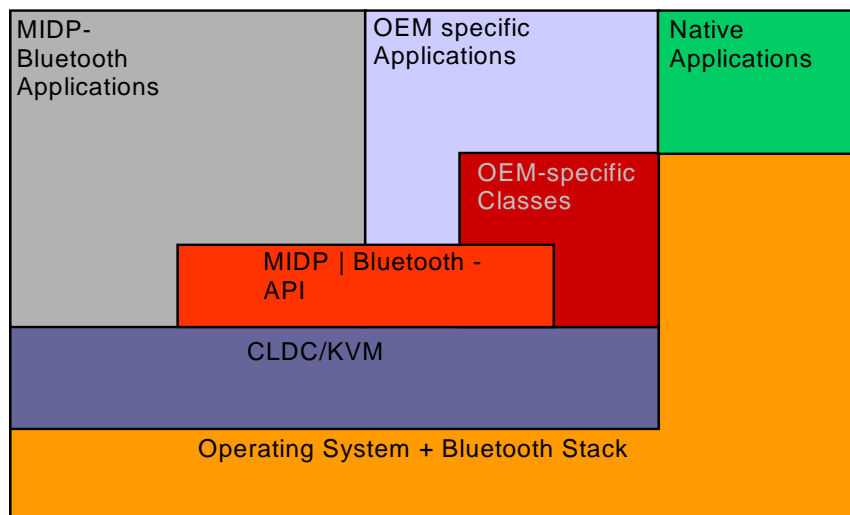


Figure 3-5 CLDC+MIDP+Bluetooth Architecture Diagram

3.3.3 Bluetooth Control Center

Bluetooth devices, especially those implementing this API, may allow multiple applications to execute simultaneously. The need for a Bluetooth Control Center (BCC) arises from the desire to prevent one application from adversely affecting another application. The BCC is a set of capabilities that allow a user or an OEM to define specific values for certain configuration parameters in a Bluetooth stack and to resolve conflicting requests made by applications to the implementation of the Java APIs for Bluetooth wireless technology. The BCC is the central authority for local Bluetooth device settings. The details of the BCC are left to the implementation. It may be a native application, an application with a separate API or simply a group of settings that are specified by the manufacturer and cannot be changed by the user.

3.3.3.1 BCC and Security Mode

At the most basic level, the BCC defines device-wide security settings. For example, the BCC controls the security mode that a stack uses and maintains the list of trusted devices. This API allows an application to specify its security requirements in terms of authentication, authorization and encryption. The JSR 82 implementation interfaces with the BCC to arbitrate these security requirements across all applications. The BCC is not a class or an interface specified in the API, but is an important part of the security architecture for this specification. The Java APIs for Bluetooth wireless technology require the existence of a BCC. The precise nature of the BCC is implementation dependent. It may or may not be written in the Java programming language.

3.3.3.2 BCC Features

The BCC must provide the API implementation with these functions:

- The base security settings of the device, including the security modes defined in the Bluetooth specification.
- A list of remote Bluetooth devices (not necessarily in the vicinity) that are already known to the local Bluetooth device.
- A list of remote Bluetooth devices (not necessarily in the vicinity) that are trusted by the local Bluetooth device.
- A mechanism to pair two devices trying to connect for the first time.
- A mechanism to provide for authorization of connection requests.

None of this information may be changed by an application other than the BCC.

The BCC may provide, but is not limited to, the following capabilities:

- Setting the Bluetooth device name (the user-friendly name) of the local device.
- Setting timeouts used by the baseband layer.
- Determining how connectable and discoverable modes are set.
- Resetting the local device.
- Enumerating services on the local device.

3.3.4 Device Properties

Various Java technology-compliant Bluetooth products need to be configured differently depending on the product and market. Thus there is a need for a set of device properties. This API defines the additional system properties that may be retrieved by a call to `LocalDevice.getProperty()`, as shown in Table 3-2. These properties either provide additional information about the Bluetooth system or define restrictions that are placed on an application by an implementation. The values of these properties are implementation dependent and are of type `String`. The strings are case sensitive. If a property is not defined or is not known, the value returned is `null`.

Properties defined in the Bluetooth API (available through the `LocalDevice.getProperty()` method) describe general capabilities of the local device as they are seen from the Java application point of view. Therefore, a Bluetooth API implementation **MUST** return `true` if the feature is supported in Java at least in one state (master, slave, no role, client, server). It **MUST** return `false` if the feature is not supported in any state. For example, this means that if a Bluetooth API implementation does not support the `master=true` parameter in any configuration (i.e. a `Connector.open()` call with a URL containing `master=true` will always fail), then the value of the `bluetooth.master.switch` property **MUST** always be `false`.

Bluetooth capabilities of the device in certain states can vary from the general Bluetooth capabilities of the device. A Bluetooth API implementation **MUST** use the Java exception mechanism to indicate to the application that the requested functionality is not available in the current state. Additionally, all properties defined in the Bluetooth API and available through the `LocalDevice.getProperty()` method **MUST** also be available through the `CLDC System.getProperty()` method.

Table 3-2 Device Properties

Device Property	Description
bluetooth.api.version obex.api.version	The version of the Java APIs for Bluetooth wireless technology that is supported. For this version it will be set to "1.1.1". Each property associated with the relevant supported package must be available if and only if the corresponding API is implemented.
bluetooth.l2cap.receiveMTU.max	The maximum ReceiveMTU size in bytes supported in L2CAP. The string will be in Base ₁₀ digits, e.g., "672".
bluetooth.connected.devices.max	The maximum number of connected devices supported (will include parked devices). The string will be in Base ₁₀ digits.
bluetooth.connected.inquiry	Is inquiry allowed during a connection? Valid values are either "true" or "false".
bluetooth.connected.page	Is paging allowed during a connection? Valid values are either "true" or "false".
bluetooth.connected.inquiry.scan	Is inquiry scanning allowed during connection? Valid values are either "true" or "false".
bluetooth.connected.page.scan	Is page scanning allowed during connection? Valid values are either "true" or "false".
bluetooth.master.switch	Is master/slave switch allowed? Valid values are either "true" or "false".
bluetooth.sd.trans.max	Maximum number of concurrent service discovery transactions. The string will be in Base ₁₀ digits.
bluetooth.sd.attr.retrievable.max	Maximum number of service attributes to be retrieved per service record. The string will be in Base ₁₀ digits.

3.3.5 Client and Server Model

A Bluetooth service is an application acting as a server that provides some kind of assistance to client devices via Bluetooth communications. This assistance typically takes the form of a capability or function that is unavailable locally on the client device. A printing service is one example of a Bluetooth server application. Other examples of Bluetooth server applications can be found in the Bluetooth profiles: LAN access servers, file and object servers, synchronization services and so on. Developers can define their own Bluetooth server applications beyond those specified in the Bluetooth profiles and make these services available to remote clients. They do this by defining a service record that describes the service and adding that service record to the service discovery database (SDDB) of the local device.

After registering a service record in the SDDB, the server application waits for a client application to initiate contact with the server to access the service. The client application and the server application then establish a Bluetooth connection to conduct their business.

The remaining chapters of this specification use the Bluetooth specification as a guide for defining the capabilities that should be offered in this optional package. This is more difficult in the case of Bluetooth server applications, because the Bluetooth specifications do not specify:

- how or when server applications register service records in the SDDB;
- what internal format or database mechanism is used by the SDDB;
- how the SDDB assigns unique service record handles to service records; or
- how server applications interact with the Bluetooth stack to form connections with remote clients.

These aspects of server applications are outside of the scope of the Bluetooth specification, are likely to vary from one Bluetooth stack implementation to another and do not require standardization to ensure interoperability of Bluetooth devices from different manufacturers. However, a standardized API will allow server applications to take full advantage of Bluetooth communications.

This specification defines the following division of responsibilities among the server application, the client application, and the Bluetooth stack.

Typical responsibilities of a Bluetooth server application are to:

- Create a service record describing the service offered by the application.
- Add a service record to the server's SDDB to make potential clients aware of this service.
- Register the Bluetooth security measures associated with this service that should be enforced for connections with clients.
- Accept connections from clients that request the service offered by the application.
- Update the service record in the server's SDDB if characteristics of the service change.
- Remove or disable the service record in the server's SDDB when the service is no longer available.

Typical responsibilities of a Bluetooth client application are to:

- Use SDP to query a remote SDDB for desired services.
- Register the Bluetooth security measures associated with this service that should be enforced for connections with servers.
- Initiate connections to servers offering desired services.
- Optionally, poll the SDDB to determine if the service has changed or has become unavailable.

The Bluetooth stack is assumed to provide the following capabilities for local Bluetooth server applications:

- A repository for service records that allows servers to add, update and remove their own service records.
- Assigning unique service record handles.
- Establishing logical connections to client applications.

The Bluetooth stack is assumed to provide the following capabilities for remote service discovery clients:

- Search and retrieval of service records stored in the server's SDDB (that is, acting as an SDP server).
- Establishing logical connections to server applications.

Chapter 5 describes the APIs that allow client applications to query a remote SDDB for desired services. Chapter 6 describes the APIs that support most of the responsibilities of a Bluetooth server application.

The security responsibilities of server and client applications are discussed in Chapter 8. Details of server applications and the requirements for implementations of the server APIs are discussed in Chapters 9, 10 and 11.

3.3.6 Power Management

An application may invoke a Bluetooth API method that requires Bluetooth be enabled and powered on while Bluetooth is disabled and/or powered off. In this situation, a Bluetooth API implementation **MUST** at least notify the user that an application is trying to perform an operation that requires the activation of Bluetooth; this is conditionally based upon the presence of a suitable user interface on the implementation. Further, a Bluetooth API implementation **SHOULD** prompt the user that Bluetooth needs to be switched on at the request of an application. If the user approval is granted, Bluetooth **MUST** be activated. If the user denies the approval, Bluetooth **MUST NOT** be switched on and the method call **MUST** fail with an appropriate exception. An application can query the power state of the Bluetooth device by invoking `LocalDevice.isPowerOn()`.

PART A – DISCOVERY

Because wireless devices are mobile, they need a way to find devices to connect to and a way to learn what those devices can do. This API provides a way to discover devices, find services and advertise services to other devices. Chapter 4 describes the API for device discovery. Chapter 5 discusses finding services on these devices and extracting the details needed to use these services. For services to be discovered, they have to be registered, and Chapter 6 describes the API for service registration.

Chapter 4 Device Discovery

4.1 Introduction

This chapter provides an overview of the device discovery capabilities of the Java APIs for Bluetooth wireless technology. An application may obtain a list of devices using either `startInquiry()` (non-blocking) or `retrieveDevices()` (blocking). The `startInquiry()` method requires the application to specify a listener; this listener is notified when new devices are found from a real inquiry. If an application does not wish to wait for an inquiry to begin, the API provides the `retrieveDevices()` method that returns the list of devices that were already found via a previous inquiry or devices that are classified as pre-known. Pre-known devices are those devices that are defined in the Bluetooth Control Center as devices the local device frequently contacts. This method does not perform an inquiry, but provides a quick way to get a list of devices that may be in the area. Once a device is discovered, a service search is usually initiated (see Chapter 5 for details).

If the list of pre-known devices (or a similar list) is maintained in the native Bluetooth implementation, a Bluetooth API implementation **MUST** use this list. However, the list of paired devices and the list of trusted devices (authorized for all services) from the native Bluetooth implementation **MUST NOT** be used as the list of pre-known devices, since the meanings of paired, trusted, and pre-known are dissimilar.

4.2 Device Discovery Classes

This section provides a brief overview of the classes that are used in device discovery. The specification of the classes and methods are found in the Javadocs distributed as part of this specification. Example code using these classes is in the next chapter.

4.2.1 interface `javax.bluetooth.DiscoveryListener`

This interface allows an application to specify an event listener that will respond to inquiry-related events. This interface is also used for service searching. The method `deviceDiscovered()` is called each time a device is found during an inquiry. When the inquiry is completed or canceled, the `inquiryCompleted()` method will be called. This method receives as an argument either the `INQUIRY_COMPLETED`, `INQUIRY_ERROR` or `INQUIRY_TERMINATED` constant to differentiate between completed, error or canceled inquiries.

4.2.2 class `javax.bluetooth.DiscoveryAgent`

This class provides methods for service and device discovery. For device discovery, this class provides the `startInquiry()` method to place the local device in inquiry mode and the `retrieveDevices()` method to return information about devices that were found via previous inquiries performed by the local device. It also provides a way to cancel an inquiry via the `cancelInquiry()` method.

Chapter 5 Service Discovery

5.1 Introduction

This chapter describes the client API used to discover services that are available on a service discovery server. Class `DiscoveryAgent` provides the methods to search for services on a Bluetooth server device and to initiate device and service discovery transactions. This API does not support searching for services on the local device.

5.2 API Overview

The process by which a client can discover services is described in the SDAP (Part K:2 of [2]), including all of the SDP (Part E of [1]) capabilities. SDP and the GAP (Part K:1 of [2]) together provide the SDAP functionality. This specification supports the following SDAP functionality:

- searching for services of a particular class;
- retrieving service attributes of a service;
- simultaneously searching for services and retrieving their attributes; and
- terminating a service search transaction in progress.

To discover services available on service discovery servers, the client application first should retrieve an object that encapsulates the SDAP functionality. This object of type `DiscoveryAgent` is a global singleton object. Pseudocode to retrieve the `DiscoveryAgent` is given next:

```
DiscoveryAgent da = LocalDevice.getLocalDevice().getDiscoveryAgent();
```

5.3 Service Discovery Classes

The following sections provide a brief overview of the classes involved in service discovery. The specification of the classes and methods are found in the Javadocs distributed as part of this specification.

5.3.1 class `javax.bluetooth.UUID`

The class `UUID` encapsulates unsigned integers that are 16 bits, 32 bits or 128 bits long. The class is used to represent a universally unique identifier used widely as the value for a service attribute. Only service attributes represented by UUIDs are searchable in Bluetooth SDP. The Bluetooth specification defines a few “short” (16-bit or 32-bit) UUIDs and describes how a 16-bit or 32-bit UUID is converted to a 128-bit UUID. This promotion is required for matching; normally only 128-bit UUIDs are compared.

5.3.2 class `javax.bluetooth.DataElement`

This class contains the various data types that a Bluetooth service attribute value can take on. Valid service attribute data types include:

- signed and unsigned integers that are one, two, four, eight or sixteen bytes long,
- `String`,
- `boolean`,
- `UUID`, and
- sequences of any one of these scalar types.

The class also presents an interface to construct and retrieve the value of a service attribute.

Note that all Bluetooth Service Discovery Protocol related values accessible through the Bluetooth API MUST be presented to applications in a form that requires no conversion with respect to endianness/byte order. If, in the underlying Bluetooth stack, these values have an endianness/byte order that is different from the one required in Java by the Java Virtual Machine Specification (big endian), then the Bluetooth API implementation MUST perform all necessary conversions.

5.3.3 interface `javax.bluetooth.ServiceRecord`

This interface defines the Bluetooth Service Record, which contains attribute *ID*, *value* pairs. A Bluetooth attribute ID is a 16-bit unsigned integer and an attribute value is a `DataElement`. A `DataElement` is a self-describing value of one of the types listed in Section 5.3.2. In addition to providing the remote Bluetooth server device from which a `ServiceRecord` was obtained, this interface has a method `populateRecord()` to retrieve desired service attributes.

5.3.4 class `javax.bluetooth.DiscoveryAgent`

The class `DiscoveryAgent` provides methods for service and device discovery. It supports service discovery in non-blocking mode and provides a way to cancel a service search transaction in progress.

5.3.5 interface `javax.bluetooth.DiscoveryListener`

This interface allows an application to specify an event listener that responds to device and service discovery events. The method `servicesDiscovered()` is called whenever services are discovered. When a service search transaction is completed or canceled, the `serviceSearchCompleted()` method is called.

5.4 Example Code

Sample code for device and service discovery follows:

```
import java.lang.*;
import java.io.*;
import java.util.*;
import javax.microedition.io.*;
import javax.bluetooth.*;

/**
 * This class shows a simple client application that performs device
 * and service
 * discovery and communicates with a print server to show how the Java
 * API for Bluetooth wireless technology works.
 */
public class PrintClient implements DiscoveryListener {

    /**
     * The DiscoveryAgent for the local Bluetooth device.
     */
    private DiscoveryAgent agent;

    /**
     * The max number of service searches that can occur at any one time.
     */
    private int maxServiceSearches = 0;

    /**
     * The number of service searches that are presently in progress.
     */
    private int serviceSearchCount;

    /**
     * Keeps track of the transaction IDs returned from searchServices.
     */
}
```



```

private int transactionID[];

/**
 * The service record to a printer service that can print the message
 * provided at the command line.
 */
private ServiceRecord record;

/**
 * Keeps track of the devices found during an inquiry.
 */
private Vector deviceList;

/**
 * Creates a PrintClient object and prepares the object for device
 * discovery and service searching.
 *
 * @exception BluetoothStateException if the Bluetooth system could not be
 * initialized
 */
public PrintClient() throws BluetoothStateException {

    /**
     * Retrieve the local Bluetooth device object.
     */
    LocalDevice local = LocalDevice.getLocalDevice();

    /**
     * Retrieve the DiscoveryAgent object that allows us to perform device
     * and service discovery.
     */
    agent = local.getDiscoveryAgent();

    /**
     * Retrieve the max number of concurrent service searches that can
     * exist at any one time.
     */
    try {
        maxServiceSearches = Integer.parseInt(
            LocalDevice.getProperty("bluetooth.sd.trans.max"));
    } catch (NumberFormatException e) {
        System.out.println("General Application Error");
        System.out.println("\tNumberFormatException: " + e.getMessage());
    }
}

```

```

        transactionID = new int[maxServiceSearches];

        // Initialize the transaction list
        for (int i = 0; i < maxServiceSearches; i++) {
            transactionID[i] = -1;
        }

        record = null;
        deviceList = new Vector();
    }

    /**
     * Adds the transaction table with the transaction ID provided.
     *
     * @param trans the transaction ID to add to the table
     */
    private void addToTransactionTable(int trans) {
        for (int i = 0; i < transactionID.length; i++) {
            if (transactionID[i] == -1) {
                transactionID[i] = trans;
                return;
            }
        }
    }

    /**
     * Removes the transaction from the transaction ID table.
     *
     * @param trans the transaction ID to delete from the table
     */
    private void removeFromTransactionTable(int trans) {
        for (int i = 0; i < transactionID.length; i++) {
            if (transactionID[i] == trans) {
                transactionID[i] = -1;
                return;
            }
        }
    }

    /**
     * Completes a service search on each remote device in the list until all
     * devices are searched or until a printer is found that this application
     * can print to.
     *
     * @param devList the list of remote Bluetooth devices to search

```

```

*
* @return true if a printer service is found; otherwise false if
* no printer service was found on the devList provided
*/
private boolean searchServices(RemoteDevice[] devList) {
    UUID[] searchList = new UUID[2];

    /*
     * Add the UUID for L2CAP to make sure that the service record
     * found will support L2CAP. This value is defined in the
     * Bluetooth Assigned Numbers document.
     */
    searchList[0] = new UUID(0x0100);

    /*
     * Add the UUID for the printer service that we are going to use to
     * the list of UUIDs to search for. (a fictional printer service UUID)
     */
    searchList[1] = new UUID("1020304050d0708093a1b121d1e1f100", false);

    /*
     * Start a search on as many devices as the system can support.
     */
    for (int i = 0; i < devList.length; i++) {

        /*
         * If we found a service record for the printer service, then
         * we can end the search.
         */
        if (record != null) {
            return true;
        }

        try {
            int trans = agent.searchServices(null, searchList, devList[i],
                this);
            addToTransactionTable(trans);
        } catch (BluetoothStateException e) {
            /*
             * Failed to start the search on this device, try another
             * device.
             */
        }

        /*

```

```

        * Determine if another search can be started.  If not, wait for
        * a service search to end.
        */
    synchronized (this) {
        serviceSearchCount++;
        if (serviceSearchCount == maxServiceSearches) {
            try {
                this.wait();
            } catch (Exception e) {
            }
        }
    }
}

/*
 * Wait until all the service searches have completed.
 */
while (serviceSearchCount > 0) {
    synchronized (this) {
        try {
            this.wait();
        } catch (Exception e) {
        }
    }
}

if (record != null) {
    return true;
} else {
    return false;
}
}

/**
 * Finds the first printer that is available to print to.
 *
 * @return the service record of the printer that was found; null if no
 * printer service was found
 */
public ServiceRecord findPrinter() {

    /*
     * If there are any devices that have been found by a recent inquiry,
     * we don't need to spend the time to complete an inquiry.
     */

```

```

RemoteDevice[] devList = agent.retrieveDevices(DiscoveryAgent.CACHED);
if (devList != null) {
    if (searchServices(devList)) {
        return record;
    }
}

/*
 * Did not find any printer services from the list of cached devices.
 * Will try to find a printer service in the list of pre-known
 * devices.
 */
devList = agent.retrieveDevices(DiscoveryAgent.PREKNOWN);
if (devList != null) {
    if (searchServices(devList)) {
        return record;
    }
}

/*
 * Did not find a printer service in the list of pre-known or cached
 * devices. So start an inquiry to find all devices that could be a
 * printer and do a search on those devices.
 */
/* Start an inquiry to find a printer */
try {

    agent.startInquiry(DiscoveryAgent.GIAC, this);

    /*
     * Wait until all the devices are found before trying to start the
     * service search.
     */
    synchronized (this) {
        try {
            this.wait();
        } catch (Exception e) {
        }
    }
} catch (BluetoothStateException e) {
    System.out.println("Unable to find devices to search");
}

if (deviceList.size() > 0) {

```

```

        devList = new RemoteDevice[deviceList.size()];
        deviceList.copyInto(devList);
        if (searchServices(devList)) {
            return record;
        }
    }

    return null;
}

/**
 * This is the main method of this application. It will print out
 * the message provided to the first printer that it finds.
 *
 * @param args[0] the message to send to the printer
 */
public static void main(String[] args) {
    PrintClient client = null;

    /*
     * Validate the proper number of arguments exist when starting this
     * application.
     */
    if ((args == null) || (args.length != 1)) {
        System.out.println("usage: java PrintClient message");
        return;
    }

    /*
     * Create a new PrintClient object.
     */
    try {
        client = new PrintClient();
    } catch (BluetoothStateException e) {
        System.out.println("Failed to start Bluetooth System");
        System.out.println("\tBluetoothStateException: " +
            e.getMessage());
    }

    /*
     * Find a printer in the local area
     */
    ServiceRecord printerService = client.findPrinter();

    if (printerService != null) {

```

```

/*
 * Determine if this service will communicate over RFCOMM or
 * L2CAP by retrieving the connection string.
 */
String conURL = printerService.getConnectionURL(
    ServiceRecord.NOAUTHENTICATE_NOENCRYPT, false);
int index= conURL.indexOf(':');
String protocol= conURL.substring(0, index);
if (protocol.equals("btspp")) {

    /*
     * Since this printer service uses RFCOMM, create an RFCOMM
     * connection and send the data over RFCOMM.
     */

    /* code to call RFCOMM client goes here */

} else if (protocol.equals("btl2cap")) {

    /*
     * Since this service uses L2CAP, create an L2CAP
     * connection to the service and send the data to the
     * service over L2CAP.
     */

    /* code to call L2CAP client goes here */

} else {
    System.out.println("Unsupported Protocol");
}

} else {
    System.out.println("No Printer was found");
}
}

/**
 * Called when a device was found during an inquiry. An inquiry
 * searches for devices that are discoverable. The same device may
 * be returned multiple times.
 *
 * @see DiscoveryAgent#startInquiry
 *
 * @param btDevice the device that was found during the inquiry

```

```

*
* @param cod the service classes, major device class, and minor
* device class of the remote device being returned
*
*/
public void deviceDiscovered(RemoteDevice btDevice, DeviceClass cod) {

    /*
    * Since service search takes time and we are already forced to
    * complete an inquiry, we will not do a service
    * search on any device that is not an Imaging device.
    * The device class of 0x600 is Imaging as
    * defined in the Bluetooth Assigned Numbers document.
    */
    if (cod.getMajorDeviceClass() == 0x600) {
        /*
        * Imaging devices could be a display, camera, scanner, or
        * printer. If the imaging device is a printer,
        * then bit 7 should be set from its minor device
        * class according to the Bluetooth Assigned
        * Numbers document.
        */
        if ((cod.getMinorDeviceClass() & 0x80) != 0) {
            /*
            * Now we know that it is a printer. Now we will verify that
            * it has a rendering service on it. A rendering service may
            * allow us to print. We will have to do a service search to
            * get more information if a rendering service exists. If this
            * device has a rendering service then bit 18 will be set in
            * the major service classes.
            */
            if ((cod.getServiceClasses() & 0x40000) != 0) {
                deviceList.addElement(btDevice);
            }
        }
    }
}

/**
* The following method is called when a service search is completed or
* was terminated because of an error. Legal status values
* include:
* <code>SERVICE_SEARCH_COMPLETED</code>,
* <code>SERVICE_SEARCH_TERMINATED</code>,
* <code>SERVICE_SEARCH_ERROR</code>,

```



```

* <code>SERVICE_SEARCH_DEVICE_NOT_REACHABLE</code>, and
* <code>SERVICE_SEARCH_NO_RECORDS</code>.
*
* @param transID the transaction ID identifying the request which
* initiated the service search
*
* @param respCode the response code which indicates the
* status of the transaction; guaranteed to be one of the
* aforementioned only
*
*/
public void serviceSearchCompleted(int transID, int respCode) {

    /*
    * Removes the transaction ID from the transaction table.
    */
    removeFromTransactionTable(transID);

    serviceSearchCount--;

    synchronized (this) {
        this.notifyAll();
    }
}

/**
* Called when service(s) are found during a service search.
* This method provides the array of services that have been found.
*
* @param transID the transaction ID of the service search that is
* posting the result
*
* @param service a list of services found during the search request
*
* @see DiscoveryAgent#searchServices
*/
public void servicesDiscovered(int transID, ServiceRecord[] servRecord) {

    /*
    * If this is the first record found, then store this record
    * and cancel the remaining searches.
    */
    if (record == null) {
        record = servRecord[0];
    }
}

```

```

        /*
         * Cancel all the service searches that are presently
         * being performed.
         */
        for (int i = 0; i < transactionID.length; i++) {
            if (transactionID[i] != -1) {
                agent.cancelServiceSearch(transactionID[i]);
            }
        }
    }
}

/**
 * Called when a device discovery transaction is
 * completed. The <code>discType</code> will be
 * <code>INQUIRY_COMPLETED</code> if the device discovery
 * transactions ended normally,
 * <code>INQUIRY_ERROR</code> if the device
 * discovery transaction failed to complete normally,
 * <code>INQUIRY_TERMINATED</code> if the device
 * discovery transaction was canceled by calling
 * <code>DiscoveryAgent.cancelInquiry()</code>.
 *
 * @param discType the type of request that was completed; one of
 * <code>INQUIRY_COMPLETED</code>, <code>INQUIRY_ERROR</code>
 * or <code>INQUIRY_TERMINATED</code>
 */
public void inquiryCompleted(int discType) {
    synchronized (this) {
        try {
            this.notifyAll();
        } catch (Exception e) {
        }
    }
}
}
}

```

Chapter 6 Service Registration

6.1 Introduction

Chapter 3 listed the typical responsibilities of a Bluetooth server application:

1. Create a service record that describes the service offered by the application.
2. Add a service record to the server's SDDB to make potential clients aware of this service.
3. Register the Bluetooth security measures associated with a service that should be enforced for connections with clients.
4. Accept connections from clients that request the service offered by the application.
5. Update the service record in the server's SDDB if characteristics of the service change.
6. Remove or disable the service record in the server's SDDB when the service is no longer available.

Responsibilities 1, 2, 5, and 6 comprise a subset of the server responsibilities having to do with advertising a service to client devices. We call this subset *service registration*.

This chapter provides an overview of the support that this API provides for service registration.

Additional details about service registration and the other server responsibilities, including sample service registration code, can be found in Chapters 9-11.

6.2 Responsibilities for Service Registration

The previous section described service registration from a generic Bluetooth perspective. In the context of the Java APIs for Bluetooth wireless technology, meeting the service registration responsibilities is a collaborative effort between the server application, the API implementation and the Bluetooth stack.

Figure 6-1 describes how these components collaborate.

Figure 6-1 shows that when the server application calls `Connector.open()` with a URL connection string argument for a server, then the implementation creates a new `ServiceRecord`. A corresponding service record is added to the SDDB by the implementation when the server application calls `acceptAndOpen()`. The server application can access its `ServiceRecord` by calling `getRecord()`, and then make modifications to that `ServiceRecord`. These modifications also are made to the corresponding service record in the SDDB when the server application calls `updateRecord()`. Finally, the application's service record is removed from the SDDB when the server application sends a `close` message to the `notifier` for the service.

6.3 Connect-Anytime Services

The assumption in Figure 6-1 is that the server application already must be running and ready to accept connections before a client attempts to make a connection to the server. Server applications that have this requirement are called *run-before-connect services*. Some devices may provide a capability to start selected server applications on demand when a client application attempts to connect to a server application that is not currently running. Server applications with this capability are called *connect-anytime services*. See Appendix A for a related specification of MIDP Push Registry and its relation to connect-anytime services.

In the case of connect-anytime services, the service record should remain in the SDDB after the server application exits, because a client still can connect to this service. Ideally, a service record should be discoverable by clients if, and only if, it is possible for clients to connect to this service. Although it is difficult to achieve this objective in all cases, it provides a useful guideline to establish policies for adding and removing service records from the SDDB.

In the case of run-before-connect services, clients have no possibility of connecting until the server calls `acceptAndOpen()`. For this reason, the implementation must not add a service record to the SDDB until `acceptAndOpen()` is called. Once the `Notifier` is closed, it is no longer possible to call `acceptAndOpen()` to accept another client connection, so the implementation must remove the service record from the SDDB or disable it.

In the case of connect-anytime services, the implementation should add the service record to the SDDB at the point when the device and the server application first reach a state where clients can connect. By the time a connect-anytime server application is running and has called `acceptAndOpen()` it must be in this state and have its service record in the SDDB. However, the service record may be added to the SDDB earlier if clients can connect prior to this point. In some cases, clients may be able to connect as soon as a server application is installed on a device. In these cases, a service record may be added to the SDDB at the time of application installation.

The service record should be removed from the SDDB or disabled when client applications no longer can connect to the service. For example, the service record for a connect-anytime service must be removed or disabled by the time of application de-installation because clients no longer can connect to this service on this device.

An implementation of this API need not support both run-before-connect services and connect-anytime services. Support for one of these two service types is sufficient.

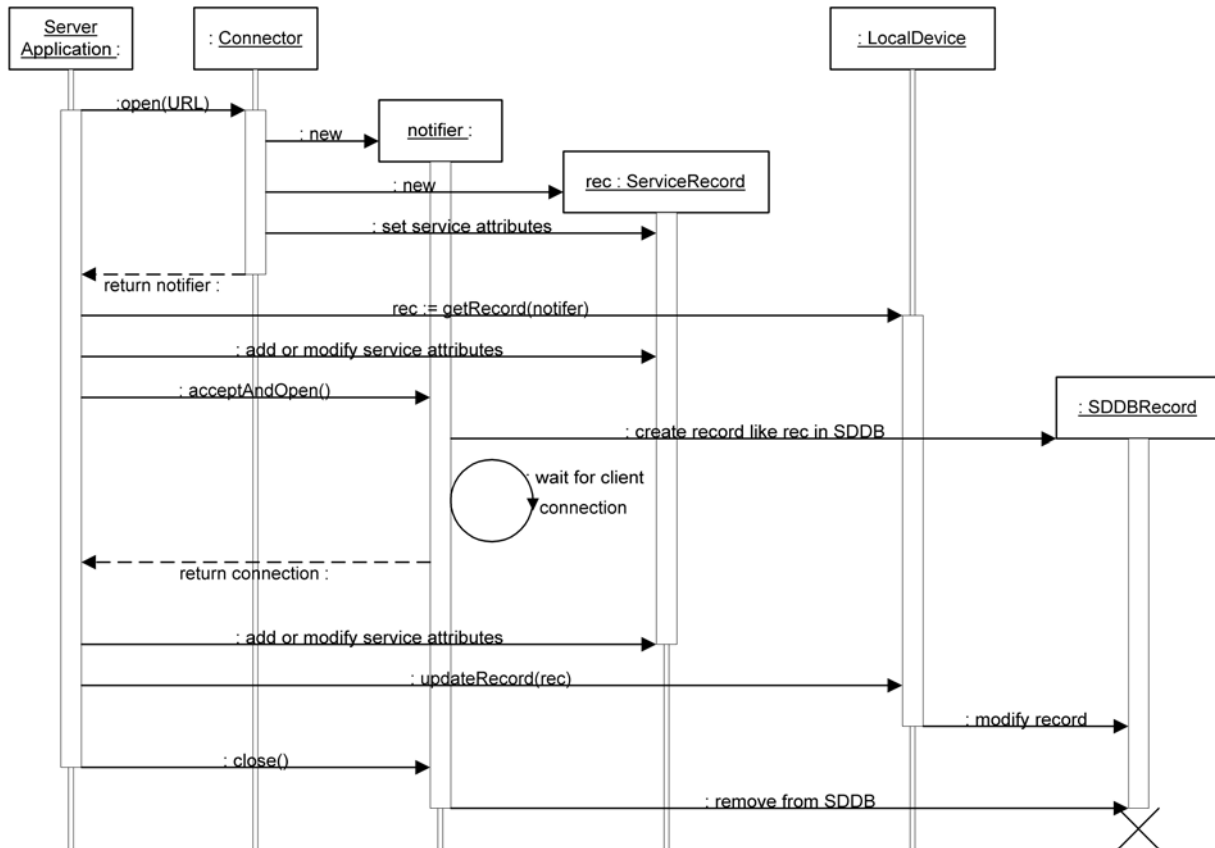


Figure 6-1 Server Application and Implementation Collaboration for Service Registration

6.4 Connectable and Non-Connectable Modes

The GAP specification [2] describes one of the modes of operation that characterize Bluetooth devices:

- **Connectable Mode:** a device in this mode periodically listens for attempts by a remote device to initiate a connection.
- **Non-Connectable Mode:** a device in this mode does not listen for attempts by a remote device to initiate a connection.

The following client functions will be successful only if the server device is in the connectable mode:

- Use SDP to query a remote SDDB for desired services.
- Initiate connections to servers offering desired services.
- Optionally, poll the remote SDDB to determine if the service has changed or has become unavailable.

The proper functioning of a server application requires that the server device be connectable. For this reason, the implementation of this API should attempt to make the local device connectable when the implementation is aware of the existence of service records in the SDDB of the local device. As part of the implementation of `acceptAndOpen()`, an attempt must be made to ensure that the local device is connectable. In the case of connect-anytime services, other occasions beside `acceptAndOpen()` could

cause the implementation to check for the existence of service records and request that the server device enter connectable mode; these cases are implementation dependent.

Because device users might have their own reasons to make the local device connectable or non-connectable, the implementation is not the final authority on whether or not the device will enter connectable mode. The implementation makes a request to the BCC to make the local device connectable, but this request might not be satisfied if the device user has chosen to make the local device non-connectable. A `BluetoothStateException` is thrown if the server device attempts to make itself connectable, but this request conflicts with the device settings established by the user.

When all of the service records in the SDDB have been removed or disabled, the implementation optionally may request that the server device be made non-connectable.

Although a device in non-connectable mode does not respond to connection attempts by remote devices, it could initiate connection attempts of its own. That is, a non-connectable device can be a client, but not a server. For this reason, the implementation need not request connectable mode for a device without any service records in its SDDB.

6.5 Classes

The following sections provide a brief overview of the classes involved in service registration. The specification of the classes and methods are found in the Javadocs distributed as part of this specification.

6.5.1 interface `javax.bluetooth.ServiceRecord`

A service record describes a Bluetooth service to clients. Service records are composed of a set of service attributes, where each attribute is a pair consisting of an attribute ID and an attribute value.

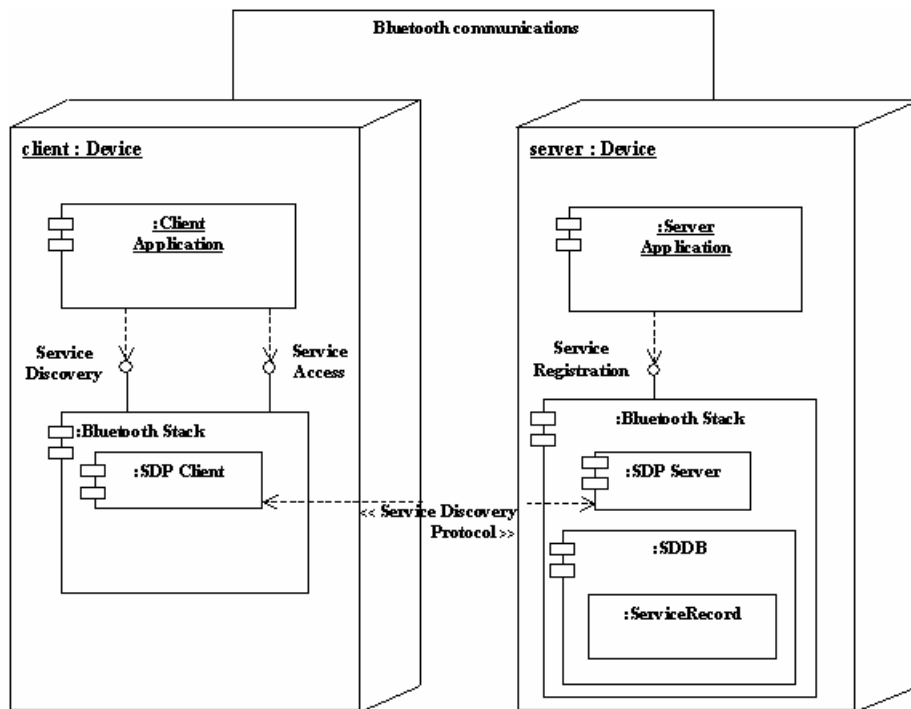


Figure 6-2 A Server Provides a Service Record That Enables Clients to Connect

An SDP server provided by a Bluetooth stack maintains a “database”² of service records that describe the services on the server device. A run-before-connect service adds its `ServiceRecord` to the SDDB by calling `acceptAndOpen()`. Service discovery clients use SDP to query the SDP server for any service records of interest (see Figure 6-2). A `ServiceRecord` provides sufficient information to allow an SDP client to connect to the Bluetooth service on the server device.

The server application also can use the `setDeviceServiceClasses()` method of `ServiceRecord` to turn on some of the service class bits of the device to reflect the new service being offered. Additional details about the device service class bits are in `javax.bluetooth.DeviceClass` class description in the Javadocs distributed as part of this specification.

6.5.2 class `javax.bluetooth.LocalDevice`

The `LocalDevice` class provides a `getRecord()` method that a server application can use to obtain its `ServiceRecord`. The server then can modify the `ServiceRecord` object by adding or modifying attributes. The updated service record then can be placed in the SDDB by performing `notifier.acceptAndOpen()` or using the `updateRecord()` method of `LocalDevice`.

² The term “database” is used informally. The service record storage mechanism is implementation-dependent and can take many forms; it need not be a true relational or other database.

6.5.3 class `javax.bluetooth.ServiceRegistrationException` extends `java.io.IOException`

A `ServiceRegistrationException` is thrown when an attempt to add or modify a service record in the SDDB fails.

Service registration failures can occur:

- during the execution of `Connector.open()`, as the implementation creates a new service record for the service specified by `Connector.open()`;
- when a run-before-connect service invokes the `acceptAndOpen()` method and the implementation attempts to add the service record associated with the notifier to the SDDB; and
- after the initial creation of the service record, when the server application attempts to modify the service record in the SDDB using the `updateRecord()` method.

PART B – DEVICE MANAGEMENT

The two chapters in this section describe APIs that make it possible to change the way in which the local device responds to remote devices. Chapter 7 describes:

- the classes that represent the essential Bluetooth objects such as `LocalDevice` and `RemoteDevice`;
- the methods that access the properties of these objects, such as their names and Bluetooth addresses; and
- the methods that manage the states of the `LocalDevice`, such as making the device discoverable.

Wireless devices are potentially more vulnerable to eavesdropping and spoofing (that is, falsifying the origin of messages) than wired devices. Bluetooth wireless technology includes a number of responses to this potential vulnerability. Some capabilities, such as frequency hopping, are applied universally to all Bluetooth communications. Other capabilities, such as encryption and authentication, can be turned on or off based on the needs of applications. Chapter 8 describes the APIs used to request these optional security mechanisms.

Chapter 7 Generic Access Profile

7.1 Introduction

This chapter contains the classes that represent the essential Bluetooth objects such as `LocalDevice` and `RemoteDevice`. These classes provide the device management capabilities that are part of the Generic Access Profile (GAP), as defined in [2]. The standard control methods for the local device are in the `LocalDevice` class. The classes `DeviceClass` and `BluetoothStateException` provide support for the `LocalDevice` class. `DeviceClass` has methods for retrieving the values for major service classes and the major and minor device classes that describe the properties of a device (these values are defined in [7]). Finally, the `RemoteDevice` class represents a remote device and provides methods to retrieve information about the remote device.

7.2 GAP Classes

The next sections provide a brief overview of the classes used in the GAP. The specification of the classes and methods are found in the Javadocs distributed as part of this specification..

7.2.1 class `javax.bluetooth.LocalDevice`

This class provides access to and control of the local Bluetooth device. It is designed to fulfill the requirements of the GAP as defined in the Bluetooth specification.

7.2.2 class `javax.bluetooth.RemoteDevice`

This class represents a remote Bluetooth device. It provides basic information about a remote device, including the device's Bluetooth address and its friendly name (Bluetooth device name).

7.2.3 class `javax.bluetooth.BluetoothStateException` extends `java.io.IOException`

This exception is thrown when a device cannot honor a request that it normally supports because of the radio's state. For example, some devices do not allow inquiry when the device is connected to another device.

7.2.4 class javax.bluetooth.DeviceClass

This class defines values for the device type and the types of services on a device.

Chapter 8 Security

8.1 Introduction

This chapter describes the methods available to applications to request secure Bluetooth communications. Client and server applications optionally can add parameters to the connection string argument of `Connector.open()` to specify the security required for connections. This makes it possible for different connections that involve different services to have different levels of security.

The parameters in the connection string can be used to set up security measures at the time that the connection is established. The methods of the `RemoteDevice` class can be used at any time by client and server applications to request a change in the security for a particular connection.

8.2 Security Requests in the Connection String

Server applications use one of the `open` methods of the `javax.microedition.io.Connector` class from CLDC to create a notifier object that can be used to wait for a client to connect. For a server, the mandatory components of the connection string argument of the `open` method provide sufficient information to create an object of the appropriate class of notifier, and to create the appropriate service record (see Chapter 6). However, optional parameters can be added to the connection string to specify the server's requirements for connections with clients. These parameters are for authentication, encryption, authorization and master/slave role switch.

8.2.1 Server Requests for Authentication

Bluetooth authentication is a means of verifying the identity of a remote device. Authentication involves a device-to-device challenge and response scheme that requires a 128-bit shared link key derived from a PIN code shared by both devices. If the PIN codes on both devices do not match, the authentication process fails.

The `authenticate` parameter has the following interpretation when used in a server application's connection string:

- If `authenticate=true`, the implementation attempts to verify the identity of every client device that attempts to connect to the service.
- If `authenticate=false`, the implementation does not attempt to verify the identity of client devices that attempt to connect to the service.
- If the `authenticate` parameter is not present in the connection string, then the implementation does not attempt to verify the identity of clients unless other parameters present in the connection string require this identity check (see Section 8.2.2 and Section 8.2.3).

Not all Bluetooth systems support authentication. Even if authentication is supported, it is possible for `authenticate=true` to conflict with device security settings that the user has established through the BCC. A `BluetoothConnectionException` is thrown in the `Connector.open()` method if `authenticate=true` and authentication is not supported, or if authentication conflicts with the current security settings for the device. If there is a conflict between the security needs of an application and the security settings of the device, some implementations of the BCC might attempt to remove the conflict by asking the user to consider changing the device settings.

8.2.2 Server Requests for Encryption

Encryption may be applied to the communications over a data link between two Bluetooth devices. When activated, encryption is applied to all data transfers in both directions over this link.

The `encrypt` parameter has the following interpretation when used in a server application's connection string:

- If `encrypt=true`, the implementation encrypts all communications to and from this service.
- If `encrypt=false`, encryption is not required by the server application, but may be used if encryption is required by the client device or by other existing connections over the data link between these two devices.
- If the `encrypt` parameter is not present in the connection string, this is equivalent to `encrypt=false`.

Because Bluetooth encryption requires a shared link key, encryption requires authentication. This means that only certain combinations of parameter settings are valid:

- `authenticate=true` and `encrypt=true` is a valid combination.
- `authenticate=true` and `encrypt=false` is a valid combination.
- `authenticate=false` and `encrypt=false` is a valid combination.
- `authenticate=false` and `encrypt=true` is an invalid combination that results in a `BluetoothConnectionException`.
- `encrypt=true` with the `authenticate` parameter being absent is treated as equivalent to `authenticate=true`.

As was the case for authentication, not all Bluetooth systems support encryption. Even if encryption is supported, it is possible for `encrypt=true` to conflict with device security settings that the user has established through the BCC. A `BluetoothConnectionException` is thrown in the `Connector.open()` method if `encrypt=true` and encryption is not supported or encryption conflicts with the current security settings for the device.

8.2.3 Server Requests for Authorization

Bluetooth authorization is a procedure in which a user of the server device grants access to a specific service by a specific client device. The implementation of authorization may involve asking the user of the server device if the client device should be allowed to access the service. It also may involve consulting a list of devices that are “trusted” and therefore are allowed to access all services. The `authorize` parameter has the following interpretation when used in a server application’s connection string:

- If `authorize=true`, the implementation consults with the BCC to determine whether or not the client device requesting a connection should be allowed access to this service.
- If `authorize=false`, all clients are allowed access to this service.
- If the `authorize` parameter is not present in the connection string, this is equivalent to `authorize=false`.

Like encryption, authorization implies that the identity of the client device can be verified through authentication. This means that only certain combinations of parameter settings are valid:

- `authenticate=true` and `authorize=true` is a valid combination.
- `authenticate=true` and `authorize=false` is a valid combination.
- `authenticate=false` and `authorize=false` is a valid combination.
- `authenticate=false` and `authorize=true` is an invalid combination that results in a `BluetoothConnectionException`.
- `authorize=true` with the `authenticate` parameter being absent is treated as equivalent to `authenticate=true`.

As was the case for authentication and encryption, not all Bluetooth systems support authorization. Even if authorization is supported, it is possible for `authorize=true` to conflict with device security settings that the user has established through the BCC. A `BluetoothConnectionException` is thrown in the `Connector.open()` method if `authorize=true` and authorization is not supported or authorization conflicts with the current security settings for the device.

8.2.4 Server Requests for Master Role

Bluetooth devices form localized networks. Each Bluetooth network has one master device whose clock and frequency hopping sequence are used to synchronize up to seven slave devices. A Bluetooth device can play either the master role or the slave role. The device that initiates the formation of a data link to

another device typically becomes master of the Bluetooth network consisting of these two devices. However, Bluetooth wireless technology provides a procedure for a slave device to request a master/slave role switch.

When used in a server application's connection string, the `master` parameter **MUST** be interpreted as follows:

- If `master=true`, this means that the application is requesting that the local device be the master of the piconet to which both the local and the remote device belong. The connection is only established if the implementation can guarantee that the local device gets the master role and retains it for the entire duration of the connection.
- If `master=false`, this means that the application does not care about the local device's role. The connection is established regardless of the local device's role, and the implementation is free in its behavior regarding issuance and acceptance of master-slave switch requests.
- If the `master` parameter is not present in the connection string, this is equivalent to `master=false`.

Not all Bluetooth systems support a master/slave role switch. If `master=true` and a master/slave role switch is not supported by the server device, a `BluetoothConnectionException` is thrown in the `Connector.open()` method. Note that in many cases, in order to fulfill the `master=true` request, the local device has to support master-slave role switch and/or have scatternet support. Also, the local device needs a mechanism for detecting, accepting, and rejecting master-slave switch requests from remote devices.

8.2.5 Client Requests in the Connection String

Client applications also may use the parameters `authenticate`, `encrypt` and `master` in the connection string argument to `Connector.open()`. When used by clients, these connection parameters **MUST** be interpreted as follows:

- When `authenticate=true`, the implementation attempts to verify the identity of the server device.
- When `encrypt=true`, the implementation encrypts all communications to and from this service. As with servers, `encrypt=true` implies `authenticate=true`.
- If `master=true`, this means that the application is requesting that the local device be the master of the piconet to which both the local and the remote device belong. The connection is only established if the implementation can guarantee that the local device gets the master role and retains it for the entire duration of the connection.
- If `master=false`, this means that the application does not care about the local device's role. The connection is established regardless of the local device's role, and the implementation is free in its behavior regarding issuance and acceptance of master-slave switch requests.
- If the `master` parameter is not present in the connection string, this is equivalent to `master=false`.

With this API, the only device that needs to grant permission to use a service is the device that offers that service. Consequently, the parameter `authorize` is not allowed in client connections. A `BluetoothConnectionException` is thrown if either `authorize=true` or `authorize=false` appears in a client connection string.

When a client attempts to connect to a service offered by a server, both devices have their own settings for the connection string parameters. The settings indicate the requirements that each device has for this connection. Almost all of the possible combinations of client and server connection string parameters can lead to a successful connection. The one exception is when the client and the server both set `master=true`. In this case, the connection attempt fails because of the contention over which device will play the master role. The client is aware of this failure to establish a connection because the client's call to `Connector.open()` throws a `BluetoothConnectionException`. The server is unaware of this failure since the implementation on the server side refuses the connection attempt but does not throw an exception. The server application continues to wait in a blocking call to `acceptAndOpen()` until there is a successful connection.

Note that just as in the server case described above, in many cases, in order to fulfill the `master=true` request, the local device has to support master-slave role switch and/or have scatternet support. Also, the local device needs a mechanism for detecting, accepting, and rejecting master-slave switch requests from remote devices.

8.3 Security Classes

Bluetooth security can be requested using the CLDC `javax.microedition.io.Connector` class as described above. The `javax.bluetooth.RemoteDevice` class defined in this API also has methods related to security, and the following subsection provides a brief overview. The specification of the classes and methods are found in the Javadocs distributed as part of this specification.

8.3.1 class `javax.bluetooth.RemoteDevice`

`RemoteDevice` contains methods that can be used at any time to request a change in the security for a connection or to interrogate the current security settings for a connection. The methods that change the security settings are intended to be used in situations where an increased level of security is required only for a bounded set of operations or for a brief period of time. Some of these methods take an instance of `javax.microedition.io.Connection` as an argument. This generic argument type is used in these methods so that they can apply to serial port connections, L2CAP connections and OBEX connections.

8.4 Server Application Security

The following sample code for a serial port server application uses optional parameters in the connection string to indicate that the implementation should perform authentication and encryption any time that a client attempts to connect to this service.

```
/*
 * Define the connection string used by this serial port
 * server. The Server uses optional parameters to request that
 * connections to this service are authenticated and
 * encrypted. The default value ("false") will be used for
 * authorize and master.
 */
String serversConnString =
    "btspp://localhost:3B9FA89520078C303355AAA694238F07;
    authenticate=true;encrypt=true";

try {
    StreamConnectionNotifier notifier =
        (StreamConnectionNotifier)Connector.open(serversConnString);
}
/*
```

```

    * Wait for a client to connect.  If the client cannot be
    * authenticated or if the link to the client cannot be
    * encrypted, the connection attempt is refused by the
    * API implementation without this server application even
    * being aware of it.
    */
    StreamConnection rfconn =
        (StreamConnection)notifier.acceptAndOpen();
} catch (IOException e) {
    /* handle any IOexceptions */
}
/* Provide serial port service */

```

8.5 Client Application Security

This section illustrates sample code for a serial port client application. When connecting to a server using `Connector.open()`, the client uses optional parameters in the connection string to set up authentication and encryption.

```

String encryptedMsg = "This message will be sent encrypted";
OutputStream os = null;
StreamConnection con = null;

ServiceRecord record;
/*
 * Use the SDP Client methods to obtain a ServiceRecord from a
 * SDP Server.
 */

/*
 * Define a String requesting that this client's connection to
 * the service described by record be authenticated and encrypted.
 * The false argument means that the client does not need the
 * master role.
 */
String clientsConnString =
    record.getConnectionURL(ServiceRecord.AUTHENTICATE_ENCRYPT,
        false);

try {
    con = (StreamConnection)

```

```

        Connector.open(clientsConnString);

    /*
     * If we reach this point, then the server device has been
     * authenticated, and all communications between the client
     * device and this server device over con are being
     * encrypted.
     */
    os = con.openOutputStream();

    /* Send encrypted data to the server device */
    os.write(encryptedMsg.getBytes());
    os.close();
} catch (BluetoothConnectionException e1) {

    /*
     * If the server cannot be authenticated or the connection
     * cannot be encrypted then this exception will be thrown.
     */
    return;
} catch (IOException e) {
    System.out.println(e.getMessage());
} finally {
    if (con != null) {
        try {
            con.close();
        } catch (Exception e) {
        }
    }
}
}

```

The sample code above generates the connection string using

```
record.getConnectionURL(ServiceRecord.AUTHENTICATE_ENCRYPT, false);
```

This adds the following optional parameters to the connection string to indicate the security functions that the client desires when connecting to the server:

```
;authenticate=true;encrypt=true;master=false
```

8.6 Security Changes After Connection Establishment

The following example shows how to change the security of a client connection after the connection is already established. Assume that the connection initially was established with default security (no

authentication, encryption or authorization). The example adds authentication and encryption to the connection to send one message, then withdraws the encryption request after the first message is sent.

```
String encryptedMsg = "This message will be sent encrypted";
String clearMsg = "This message will be sent unencrypted";
OutputStream os = null;
StreamConnection con = null;
RemoteDevice remDev;
ServiceRecord record;

/*
 * Use the SDP client methods to obtain a ServiceRecord from
 * an SDP server.
 */

/* Create a connection string requesting no security */
String clientsConnString =
    record.getConnectionURL(ServiceRecord.NOAUTHENTICATE_NOENCRYPT,
        false);

try {
    con = (StreamConnection)
        Connector.open(clientsConnString);
    remDev = RemoteDevice.getRemoteDevice(con);

    if (!remDev.isEncrypted()) {

        /* The connection to remDev is not currently
         * encrypted, so turn on encryption.
         */
        if (!remDev.authenticate() || !remDev.encrypt(con, true)) {
            /* quit since unable to turn on encryption */
            return;
        }
    }

    /*
     * If we reach this point, then the server device has been
     * authenticated, and all communications between the client
     * device and the server device over con (or any other
     * connection) are being encrypted.
     */
    os = con.openOutputStream();

    /* Send encrypted data to the server device */
    os.write(encryptedMsg.getBytes());
}
```

```

    /* Withdraw the request for encryption */
    if (remDev.encrypt(con, false)) {
        /*
         * Send unencrypted data to the server device since
         * successful in turning off encryption.
         */
        os.write(clearMsg.getBytes());
    } else {
        /*
         * Send encrypted data to the server device since
         * unable to turn off encryption.
         */
        os.write(encryptedMsg.getBytes());
    }
    os.close();
} catch (IOException e) {
    System.out.println(e.getMessage());
} finally {
    if (con != null) {
        /*
         * No need to do remDev.encrypt(con, false)
         * before closing the connection.
         */
        try {
            con.close();
        } catch (Exception e) {
        }
    }
}
}

```

This sample code establishes a connection to a service without requesting any Bluetooth security features in the connection string argument to `Connector.open()`. That is, the connection string created by `getConnectionURL()` includes the following connection parameters:

```
;authenticate=false;encrypt=false;master=false
```

The preceding sample code contains the following statements that are used to authenticate the server device and encrypt the serial port connection after the connection has been established:

```
remDev.authenticate();
remDev.encrypt(con, true);
```

The `authenticate()` statement is redundant because the `encrypt()` statement ensures that the connection is authenticated before beginning encryption. However, this redundancy is harmless, as only one authentication need be performed.

As indicated in this example, withdrawing a request for encryption does not necessarily mean that encryption is turned off. If other connections to this same device need encryption, then the data link that

underlies all of the connections might continue to be encrypted, depending on the policies used in the BCC for this device.

This example checks whether or not encryption was turned off to illustrate the API. Ordinarily applications need not be concerned with whether or not non-sensitive information is being encrypted by the stack.

While this example shows a client application using methods of the `RemoteDevice` class to change the security of communications over a connection, the same methods also can be used by server applications. By changing the security on a connection, a server is changing the security used for communications with a particular client.

Chapter 9 MIDP 2.0 Security

9.1 Introduction

This chapter describes the Bluetooth Permissions that are an extension of the framework first defined in MIDP 2.0.1. The MIDP 2.0.1 specification defines the framework for authenticating the source of a MIDlet suite and authorizing the MIDlet suite to perform protected functions by granting permissions that it may have requested based on the security policy on the device. It also identifies functions that are deemed security vulnerable and defines permissions for those protected functions. Additionally, MIDP 2.0.1 specifies the common rules for APIs that can be used together with the MIDP but are specified outside the MIDP. The MIDP 2.0.1 specification does not mandate a single trust model but rather allows the model to accord with the device trust policy. This chapter defines the recommended security policy for Bluetooth. The Function group definitions referred to below can be found in MIDP 2.0.1 or later.

9.2 Bluetooth Permissions

Table 4 Assigning proposed permissions and API calls specified in the Bluetooth API to function groups

Permission	Permitted API calls	Function group
javax.microedition.io.Connector.bluetooth.client	Connector.open("btspp://<server BD_ADDR>...") Connector.open("btl2cap://<server BD_ADDR>...")	Local Connectivity
javax.microedition.io.Connector.obex.client	Connector.open("btgoep://<server BD_ADDR>...") Connector.open("irdaobex://discover...") Connector.open("irdaobex://addr...") Connector.open("irdaobex://conn...") Connector.open("irdaobex://name...")	Local Connectivity
javax.microedition.io.Connector.obex.client.tcp	Connector.open("tcpobex://<server IP_ADDR>...")	Net Access
javax.microedition.io.Connector.bluetooth.server	Connector.open("btspp://localhost:...") Connector.open("btl2cap://localhost:...")	Local Connectivity
javax.microedition.io.Connector.obex.server	Connector.open("btgoep://localhost:...") Connector.open("irdaobex://localhost:...")	Local Connectivity
javax.microedition.io.Connector.obex.server.tcp	Connector.open("tcpobex://:<PORT>") Connector.open("tcpobex://")	Net Access

PART C – COMMUNICATION

To use a service on a remote Bluetooth device, the local Bluetooth device must communicate using the same protocol(s) as the remote service. So that applications can conveniently access a wide variety of Bluetooth services, APIs are provided to allow connections to services that have RFCOMM, L2CAP or OBEX as their highest-level protocol (in addition to the APIs for SDP described previously). For services that use some other protocol layered above one of these three (for example, TCP/IP), it should be possible for an application to access that service by implementing the additional protocol within the application.

Chapter 9 describes the API for the Serial Port Profile, which provides a high-level interface to many services that use the RFCOMM protocol. Chapter 10 describes the API for the L2CAP protocol. Chapter 11 describes the API for the OBEX protocol.

Because the OBEX protocol can be used over several different transmission media (infrared, wired, Bluetooth radio and so on), it is desirable that the OBEX APIs be independent of the other Bluetooth APIs. For this reason, this specification treats the OBEX APIs in Chapter 11 as a separate optional package that can be used either in conjunction with the Bluetooth APIs or independently of them.

The Generic Connection Framework (GCF) from the CLDC provides the base connection for communication protocol implementation. CLDC defines the following three methods for opening a connection, with the ‘mode’ and ‘timeouts’ parameters being optional. Timeout handling is implementation dependent.

```
Connection Connector.open(String name);  
Connection Connector.open(String name, int mode);  
Connection Connector.open(String name, int mode, boolean timeouts);
```

The implementation must support opening a connection with either a server connection URL or a client connection URL, with the default mode of `READ_WRITE`. The server and client connection URLs for each protocol are described in the following chapters. Refer to the CLDC specification for a description of `Connector.open()`.

Chapter 10 Serial Port Profile

10.1 Introduction

The RFCOMM protocol provides emulation of multiple RS-232 serial ports between two Bluetooth devices. The Bluetooth addresses of the two endpoints identify an RFCOMM session. Only one RFCOMM session can exist between any pair of devices at one time, but a session may have more than one connection. The number of connections that can be made simultaneously in a Bluetooth device is implementation dependent. A device can have more than one RFCOMM session as long as each session is linked to a different device. This feature is supported in this API, but according to the Bluetooth specification it is optional, so some Bluetooth stacks may not support it.

10.2 API Overview

An application that offers a service based on the Serial Port Profile (SPP) is an SPP server. An application that initiates a connection request to an SPP service is an SPP client. Client and server applications may reside on either end of an RFCOMM session. An SPP server registers its service in the SDDB. As part of the service registration process, a *server channel identifier* is added to the service record by the implementation. A client locates the service using the service discovery API. It then can connect to the service by specifying the server address and server channel identifier. After a connection is established, data can be transmitted in both directions between the client and server. Negotiation of connection parameters and flow control between two Bluetooth devices must be handled automatically by the SPP connection implementation.

This chapter describes the capabilities that an SPP implementation must have beyond those specified for the interfaces `StreamConnection` and `StreamConnectionNotifier` in CLDC [3]. This chapter also describes the optional capabilities that an implementation may support.

10.3 SPP Server and Client Connection URLs

The Augmented Backus-Naur Form (ABNF) described here follows the guidelines of RFC 2234, [11]. The ABNF for SPP server and client connection URLs is:

```
srvString = protocol colon slashes srvHost 0*5(srvParams)
```

```

cliString = protocol colon slashes cliHost 0*3(cliParams)

protocol = btsp

btsp = %d98.116.115.112.112          ; defines the literal btsp

cliHost = address colon channel
srvHost = "localhost" colon uuid

channel = %d1-30
uuid = 1*32(HEXDIG)

colon = ":"
slashes = "/"
bool = "true" / "false"
address = 12*12(HEXDIG)
text = 1*( ALPHA / DIGIT / SP / "-" / "_" )

name = ";name=" text
master = ";master=" bool           ; see constraints noted below
encrypt = ";encrypt=" bool        ; see constraints noted below
authorize = ";authorize=" bool    ; see constraints noted below
authenticate = ";authenticate=" bool ; see constraints noted below
cliParams = master / encrypt / authenticate
srvParams = name / master / encrypt / authorize / authenticate

```

The core rules from RFC 2234 that are being referenced are: SP for space, ALPHA for lowercase and uppercase alphabets, DIGIT for digits zero through nine and HEXDIG for hexadecimal digits (0-9, a-f, A-F).

RFC 2234 specifies the values of literal text strings as being case-insensitive. For example, the rule master in the preceding ABNF allows all of (“;MASTER=”, “;master=”, “;MaStEr=”) as legal values.

The string produced from the srvString and cliString rules must not contain both the substrings “;authenticate=false” and “;encrypt=true”. For the string produced from srvString, it also must not contain both the substrings “;authenticate=false” and “;authorize=true”. Additionally, the string produced from either of the srvString or cliString rules must not contain one of the params (name, ...) repeated more than once. These constraints are being specified here because ABNF does not contain a rule that would achieve the desired functionality.

10.4 Serial Port Service Registration

An SPP server must initialize the services it offers and register those services in the SDDB. A pair of related objects represents a serial port service:

- 1 An object that implements the `javax.microedition.io.StreamConnectionNotifier` interface. This object listens for client connections to this service.
- 2 An object that implements the `javax.bluetooth.ServiceRecord` interface. This object describes this service and how it can be accessed by remote devices.

A server application uses the method `Connector.open()` with an SPP server connection URL to create both of these objects representing the serial port service. For example:

```
StreamConnectionNotifier service =
    (StreamConnectionNotifier)Connector.open(
        "btspp://localhost:102030405060708090A1B1C1D1D1E100;name=SPPEX");
```

Invoking `Connector.open()` with an SPP server connection URL argument returns a `StreamConnectionNotifier` that represents the SPP service. The implementation of `Connector.open()` also creates a new service record that represents the SPP service. An SPP implementation must perform the following steps when creating this service record:

- 1) An RFCOMM server channel identifier, `chanN`, is assigned.
- 2) `chanN` is added to the `ProtocolDescriptorList` in the service record.
- 3) The UUID (102030...) used in the connection string to describe the type of service being offered is added to the `ServiceClassIDList`.
- 4) A `ServiceName` attribute is added to the service record with value "SPPEX".

Section 10.6 describes the details of how SPP service records are created by the API implementation and how server applications can modify them.

In the case of a run-before-connect service, the service record is added to the SDDB the first time the server application calls `acceptAndOpen()` on the associated `StreamConnectionNotifier` (see the next section for a discussion of the notifier and the role of the `acceptAndOpen()` method). The service record becomes visible to potential SPP client applications when it is added to the SDDB.

10.5 Connection Establishment

10.5.1 Server Connection Establishment

As illustrated in the following example code, an SPP server creates an object of type `StreamConnectionNotifier` by:

- Using the appropriate string for an SPP server as the argument to `Connector.open()`; and
- Casting the result returned from `Connector.open()` to the `StreamConnectionNotifier` interface.

```
StreamConnectionNotifier service =
    (StreamConnectionNotifier) Connector.open(
        "btspp://localhost:102030405060708090A1B1C1D1D1E100;name=SPPEX");

StreamConnection con =
    (StreamConnection) service.acceptAndOpen();
```

The server uses the `acceptAndOpen()` method to indicate that it is ready to accept a client connection. The method blocks until a client connects. The example code above demonstrates that a `StreamConnection` object is returned by `acceptAndOpen()` when the service accepts a connection request from a client. The implementation of `acceptAndOpen()` for the `btspp` notifier must cause the Bluetooth stack to send all communication between the client application and the server application through the streams associated with the object returned by `acceptAndOpen()`. The object returned by `acceptAndOpen()` must implement the generic `StreamConnection` interface, but typically will be an instance of a class that is tailored specifically for the SPP.

The SPP service can accept multiple connections from different clients by calling `acceptAndOpen()` repeatedly. A new `StreamConnection` object is created for each connection accepted. This object **MUST** represent a particular connection to a remote device and there **MUST** be no interference with other connections to the same RFCOMM server channel (i.e. data from different connections are not mixed). At the same time, each client accesses the same service record and connects to the service using the same RFCOMM server channel. If the underlying Bluetooth system does not support multiple connections, then the implementation of `acceptAndOpen()` throws a `BluetoothConnectionException` with the `BluetoothConnectionException.NO_RESOURCES` error code.

The method `close()` in the `StreamConnection` object that represents an SPP server-side connection is used to close the connection. Refer to the CLDC specification [3] for a description of `close()` in the `Connection` class.

Note that once an application invokes `close()` on any `StreamConnectionNotifier` instance, all pending `acceptAndOpen()` methods that have been invoked previously on that instance **MUST** throw `InterruptedException`. This mechanism provides an application with the means to cancel any outstanding `acceptAndOpen()` method calls.

When a run-before-connect service sends a `close()` message to a `StreamConnectionNotifier`, the service record associated with that notifier becomes inaccessible to clients through service discovery. The implementation must remove the service record from the SDDB or use any disabling features that the Bluetooth stack provides such that the service record remains in the SDDB but is inaccessible to clients. The `close()` message also causes the implementation to deactivate any service class bits that were activated by `setDeviceServiceClasses()`, unless another service whose notifier is not yet closed also had activated some of the same bits.

If `StreamConnections` to this service remain open when the `StreamConnectionNotifier` is closed, it is not feasible to release the RFCOMM server channel that is assigned to this service. Only when all of the `StreamConnections` to this service are closed and the notifier is closed should the implementation release the RFCOMM server channel.

If an application does not close the `StreamConnectionNotifier` or all of the `StreamConnections`, then the API implementation should perform the normal termination operations when the application terminates. In the case of a run-before-connect service, the implementation should remove the service record, release the server channel and deactivate the service class bits, unless other services corresponding to those same bits remain active. Owing to the possibility of abnormal shutdowns, service records for run-before-connect services could remain in the SDDDB and service class bits could remain active although the server is not running. Removing such orphaned service records and correcting the service class bits is implementation dependent.

10.5.2 Client Connection Establishment

Before an SPP client can establish a connection to an SPP service, it must discover that service via service discovery. A client connection URL includes the Bluetooth device address of the server and the server channel identifier for the service. The method `getConnectionURL()` in the `ServiceRecord` interface is used to obtain the client connection URL for the service.

Invoking the method `Connector.open()` with an SPP client connection URL returns a `StreamConnection` object that represents a client-side SPP connection. The following example demonstrates that a client establishes a connection to an SPP service identified with server channel identifier=5 on a device with address '0050C000321B':

```
StreamConnection con =
    (StreamConnection) Connector.open("btspp://0050C000321B:5");
```

The method `close()` in the `StreamConnection` object that represents an SPP client-side connection is used to close the connection. Refer to the CLDC specification [3] for a description of `close()` in the `Connection` class.

10.6 SPP Service Records

The Bluetooth Profiles specification has a template for the service record used by the SPP. The API implementation uses this template to create a service record and insert the appropriate value for the RFCOMM server channel identifier. The result is a minimal but sufficient service record.

Table 10-1, for example, shows the template for the service record created as a result of the call `Connector.open("btspp://localhost:102030405060708090A1B1C1D1D1E100;name=SPPEX")`. The template in Table 10-1 is adapted from the one in the SPP specification (Part K:5 of [2]). Service records consist of a collection of (attrID, attrValue) pairs. Each pair describes one attribute of the service.

In Table 10-1, each row that has an entry in the AttrID column corresponds to a new (attrID, attrValue) pair. Attribute values are represented as DataElements, which can be of various types (see [1], Part E, Section 3). The Type/Size column in rows with an AttrID entry indicates the type of the attrValue component of this (attrID, attrValue) pair. For example, the ServiceName row has a “String” entry in the Type/Size column, indicating that the value of the ServiceName attribute is a DataElement of type string.

Some attribute values have a more complex structure. For example, when DATSEQ is listed in the Type/Size column, the attribute value is a sequence of other DataElements. If an attribute value is a DATSEQ, then each element of the sequence has its own rows in Table 10-1. For example, the ProtocolDescriptorList attribute has a DATSEQ value, and the DataElements that make up ProtocolDescriptorList are described in the three rows following the ProtocolDescriptorList row.

The ProtocolDescriptorList describes the Bluetooth protocol stack that may be used to access the service that is described by the service record. In this case, a connection to this serial port service can be made using a stack that consists of the L2CAP layer and the RFCOMM layer, implying that the server application communicates directly with RFCOMM. The ProtocolDescriptorList attribute is a DATSEQ containing two other DATSEQs: ((L2CAP), (RFCOMM, chanN)).

The first element (L2CAP) indicates that L2CAP is the lowest protocol layer used to access this service.³ The second element, (RFCOMM, chanN), consists of two elements. The first is the name of the next higher layer protocol, RFCOMM; the second is a protocol-specific parameter, chanN, which is the RFCOMM server channel identifier. In Table 10-1, the DATSEQ (L2CAP) is described by the Protocol0 row and the DATSEQ (RFCOMM, chanN) is described by the next two rows, Protocol1 and ProtocolSpecificParameter0.

The “M/O” column in Table 10-1 indicates which service record entries are mandatory (“M”) and which entries are optional (“O”) according to the Bluetooth specification. The “C/F” column in Table 10-1 indicates which service record entries can be changed (“C”) by the server application and the implementation and which entries are fixed (“F”), or can be changed only by the implementation. The motivation for fixing certain values is described later.

Table 10-1 Service Record Template for SPP-based Services

Item	Definition	Type/Size	Value	AttrID	M/O	C/F	Notes
ServiceRecordHandle	Uniquely identifies each record in an SDDB	unsigned int32	Varies (assigned by SDP server)	See [7]	M	F	Attr+Value added by the implementation when the record is added to the SDDB.
ServiceClassIDList		DATSEQ		See [7]	M	C	Attr+Value inserted by implementation.
ServiceClass0	Used by server application to identify a new	UUID 128bit	Varies; e.g., 102030 405060		O	C	Obtained from the connection string argument to Connector.open() and inserted by the implementation.

³ Since SDP itself is a protocol that resides above L2CAP, layers below L2CAP are not included in SDP service records.

Item	Definition	Type/ Size	Value	AttrID	M/O	C/F	Notes
	type of Serial Port service		708090 A1B1C 1D1D1 E100				
ServiceClass1	SerialPort	UUID 16 bit	See [7]		O	C	Value inserted by implementation.
ProtocolDescriptorList		DATSEQ		See [7]	M	C	Attr+Value inserted by implementation.
Protocol0	L2CAP	UUID 16bit	See [7]		M	F	DATSEQ inserted by implementation.
Protocol1	RFCOMM	UUID 16bit	See [7]		M	F	DATSEQ inserted by implementation.
ProtocolSpecificParameter0	Server Channel	unsigned int8	Varies; legal options are 1-30		M	F	Value assigned and inserted by the implementation. Used by btsp clients to identify the service to connect to.
ServiceName	Displayable text name	String	Varies	0 + 0x0100 (base attrID for the primary language)	O	C	The connection string may contain a name parameter (e.g., name=SPPEX). If so, the parameter value is used as the attribute value. Specifies the ServiceName in the primary language of the service record.
ServiceName	Displayable text name in another natural language	String	Varies	0 + base for another language (see next row)	O	C	Attr+Value optionally inserted by server application. Specifies the ServiceName in another language used in this service record.
LanguageBaseAttributeList		DATSEQ		See [7]	O	C	Attr+Value optionally inserted by server application. Indicates the base value for a language other than the primary one used in the service record.
ServiceDescription	Displayable text name	String	Varies	1 + language base	O	C	Attr+Value optionally inserted by server application. A brief, human-readable description of the service.
ServiceID	Unique ID for this specific service	UUID 128bit	Varies; user defined		O	C	Attr+Value optionally inserted by server application. This value may be used to denote a

Item	Definition	Type/ Size	Value	AttrID	M/O	C/F	Notes
							specific server application no matter where that application runs.
BluetoothProfileDescriptorList		DATSEQ		See [7]	O	C	Attr+Value optionally inserted by server application. Describes all of the Bluetooth profiles that this service complies with.
Profile#i	SerialPortProfile	UUID 16bit	See [7]		O	C	DATSEQ optionally inserted by server application; it is part of BluetoothProfileDescriptorList
Param#i	Profile version	unsigned int16	0x0100		O	C	Optionally inserted by server application. It indicates the supported version of the corresponding Profile#i.
ServiceAvailability	Ability of server to accept new clients	unsigned int8	Varies. 0xFF = fully available; 0x00 = unavail	See [7]	O	C	Attr+Value optionally inserted by server application; meaning varies by profile.
User Defined Attribute #i	User Defined	Varies		Varies	O	C	Attr+Value optionally inserted by server application; these values are not described in the Bluetooth specification.

10.6.1 SPP Service Record Modification

The method `Connector.open()` automatically adds some service attributes to the `ServiceRecord` after creating it. The “Notes” column of Table 10-1 indicates how attributes are added to the service record. The implementation adds those attributes that are mandatory according to the Bluetooth specification (indicated by “M” in the “M/O” column).

The server application optionally may add other service attributes to the `ServiceRecord`. There are many optional attributes defined in the Bluetooth SDP specification ([1], Part E) that server applications could use to describe various properties of their services; Table 10-1 shows only a few of these. It is also possible to add user-defined attributes (those not defined by the Bluetooth specification) to service records as indicated in Table 10-1. Consequently, the API has methods that allow server applications to add service attributes to the service record created by `Connector.open()`.

In the `updateServiceAvailability()` method in the sample code in Section 10.7.3, the server application obtains the `ServiceRecord` that was created for it using the statement reproduced here:

```
ServiceRecord record = localDev.getRecord(notifier);
```

Table 10-1 shows that the implementation of `Connector.open("btspp:...")` does not add the `ServiceAvailability` attribute to the `ServiceRecord`. The sample code in Section 10.7.3 uses the `setAttributeValue()` method of the `ServiceRecord` interface to add the `ServiceAvailability` attribute.

In the case of a run-before-connect service, the `ServiceRecord` is added to the SDDB the first time the server application calls `acceptAndOpen()` on the associated notifier. Any modifications the server application made to its `ServiceRecord` prior to calling `acceptAndOpen()` will be reflected in the service record added to the SDDB.

The sample code in Section 10.7.3 also makes modifications to the `ServiceRecord` after the initial call to `acceptAndOpen()`. The server application modifies the `ServiceAvailability` attribute based on the current number of client connections. The modifications the server application makes to `ServiceRecord` are not immediately reflected in the copy of this service record in the SDDB. The sample code uses the following method call to update the copy of the service record in the SDDB so that SDP clients will have visibility to the current value of the `ServiceAvailability` attribute:

```
localDev.updateRecord(record);
```

10.6.2 Restrictions on Modifying Service Records

As noted earlier, an application that needs access to a service record in the server's SDDB must have access to the associated notifier:

```
ServiceRecord record = localDev.getRecord(notifier);
```

Because applications can access only their own notifiers, it is not possible for one application to modify another application's service records in the server's SDDB. If a malicious application AppM could change the service record of another application, AppB, then AppM could:

- cause clients to use incorrect connection parameters so that they could not connect to AppB when they intended to do so; and
- divert connections destined for AppB to the malicious application AppM.

Clearly, this would be undesirable, which is why applications can modify only their own service records. Several rows in Table 10-1 have an "F" (for "fixed") in the C/F column; this indicates that applications – including the application that "owns" this service record – cannot change these entries in the service record. The fixed attributes relate to the fundamental nature of the service or to the management of the SDDB; hence an application is not permitted to change them (only the implementation can set these values).

The `ServiceRecordHandle` attribute described in Table 10-1 is used to uniquely identify service records in the SDDB. This attribute is fixed to ensure that the SDP server implementation in the Bluetooth stack can manage the assignment of `ServiceRecordHandle` values.

The `ProtocolDescriptorList` tells a client application how to connect to the service. `Protocol0` and `Protocol1` represent the (L2CAP, RFCOMM) stack that normally is used to connect to a serial port

service. These attributes are fixed to ensure that this protocol stack is always in the `ProtocolDescriptorList`. Note that a server application optionally may add additional protocols to the `ProtocolDescriptorList`, although this is unlikely to be useful for serial port services.

`ProtocolSpecificParameter0` is the server channel identifier. This attribute is fixed to ensure that the RFCOMM implementation in the Bluetooth stack can manage the assignment of server channel values. If an application were permitted to change the server channel identifier, effects similar to those described earlier for a malicious application might result.

The two methods that serial port servers use to change the contents of the SDDB must enforce all of these restrictions:

- `StreamConnectionNotifier.acceptAndOpen()`, and
- `LocalDevice.updateRecord()`.

An exception is thrown if these restrictions are violated. See the specification of the `updateRecord()` method in the Javadocs distributed as part of this specification for additional details.

10.6.3 Device Service Classes

Client devices can consult the `DeviceClass` of a server device to get a general idea of the kind of device it is (for example, phone, PDA, or PC) and the major service classes it offers (for example, rendering, telephony, or information). This means there are two different ways in which a server application describes the service it offers:

- by adding a service record to the SDDB, and
- by activating major service class bits in the `DeviceClass`.

In the example code in Section 10.7.3, the `defineService()` method uses the `setDeviceServiceClasses()` method of the `ServiceRecord` interface to describe the single major service class provided by the server application:

```
record.setDeviceServiceClasses(0x40000);
```

In the example, the server offers a “rendering” service, such as a printer or a speaker. A server uses the `setDeviceServiceClasses()` method to associate the `ServiceRecord` with all of the major service classes that describe that service. Later, when a run-before-connect service first calls `acceptAndOpen()`, both its service record and its major service class bits are made visible to client devices. In the case of the major service classes, `acceptAndOpen()` performs an OR of the current settings of the service class bits of the device with the major service classes declared by the `setDeviceServiceClasses()` method. This OR operation might activate additional service class bits that indicate new capabilities for the device.

A server application is not required to use the `setDeviceServiceClasses()` method. However, it is recommended that a server use the method to describe its service in terms of the major service classes. This practice allows clients to obtain a `DeviceClass` for the server that accurately describes the major service classes provided by the server.

10.7 Example Code

The next two sections illustrate example code for client and server applications. The third section shows an example of a server application that makes modifications to its service record.

Device A and Device B are Bluetooth devices. An application on Device A transmits data to an application on Device B.

A server application on Device B registers the service. A client application on Device A invokes service discovery to obtain the connection URL for the service. The URL string includes the Bluetooth address of Device B and the server channel identifier for the service.

10.7.1 Client Application

```
/**
 * A code segment of an RFCOMM client.
 *
 */

/**
 * The RFCOMMPrinterClient will make a connection using the connection string
 * provided and send a message to the server to print the data sent.
 */
class RFCOMMPrinterClient {

    /**
     * Keeps the connection string in case the application would like to make
     * multiple connections to a printer.
     */
    private String serverConnectionString;

    /**
     * Creates an RFCOMMPrinterClient that will send print jobs to a printer.
     *
     * @param server the connection string used to connect to the server
     */
    RFCOMMPrinterClient(String server) {
        serverConnectionString = server;
    }

    /**
     * Sends the data to the printer to print. This method will establish a
     * connection to the server and send the String in bytes to the printer.
     * This method will send the data in the default encoding scheme used by
     * the local virtual machine.
     *
     * @param data the data to send to the printer
     *
     * @return true if the data was printed; false if the data failed to be
     * printed
     */
}
```

```

public boolean printJob(String data) {
    OutputStream os = null;
    StreamConnection con = null;

    try {
        /*
         * Open the connection to the server
         */
        con =(StreamConnection)Connector.open(serverConnectionString);

        /*
         * Sends data to remote device
         */
        os = con.openOutputStream();
        os.write(data.getBytes());

        /*
         * Close all resources
         */
        os.close();
        con.close();
    } catch (IOException e2) {
        System.out.println("Failed to print data");
        System.out.println("IOException: " + e2.getMessage());
        return false;
    }

    return true;
}
}

```

10.7.2 Server Application

```

/**
 * A code segment of SPP server.
 *
 */
StreamConnectionNotifier service = null;
StreamConnection con = null;
InputStream is = null;
String serviceURL =
    "btspp://localhost:102030405060708090A1B1C1D1D1E100;name=SPP Server1";

try {
    /*
     * Creates an SPP service record.
     */
    service = (StreamConnectionNotifier)
        Connector.open(serviceURL);

    /*
     * Add the service record to the SDDB and
     * accept a client connection.

```

```

    */
    con = (StreamConnection)service.acceptAndOpen();

    is = con.openInputStream();

    try {

        int ch;

        while ((ch = is.read()) != -1) {
            /* handle data received */
        }
    } catch (IOException e) {
        System.out.println(e.getMessage());
    }

    is.close();

    /*
     * Close connection.
     */
    con.close();

    /*
     * Remove service record from the SDDB.
     * Stop accepting connections.
     */

    service.close();

} catch (IOException e) {
    System.out.println(e.getMessage());
}

```

10.7.3 Service Record Modification

The following example code illustrates how a run-before-connect server application can add a `ServiceAvailability` attribute to the service record to inform clients whether or not the `ExampleSerialPortService` is currently accepting new client connections. `ExampleSerialPortService` can accept up to two clients at the same time.

```

public class SerialPortServerExample {
    int clients = 0;
    int maxClients = 2;
    boolean stop = false;
    LocalDevice localDev = LocalDevice.getLocalDevice();
    StreamConnectionNotifier notifier;

    /* Define ServiceAvailability values for 0, 1, and 2 clients */
    DataElement fullyAvail

```

```

    = new DataElement(DataElement.U_INT_1, 0xFF);
DataElement halfAvail
    = new DataElement(DataElement.U_INT_1, 0x80);
DataElement unAvail
    = new DataElement(DataElement.U_INT_1, 0x00);

public static void main(String[] args) {
    SerialPortServerExample server = new SerialPortServerExample();
    server.defineService();
    server.acceptClientConnections();
}

public void defineService() {

    String connString =
        "btspp://localhost:3B9FA89520078C303355AAA694238F07;name=SPP Server2";

    /*
     * Connector.open(connString) assigns a RFCOMM server channel
     * and creates a service record using this channel.
     */
    try {notifier =
        (StreamConnectionNotifier)Connector.open(connString);
    } catch (ServiceRegistrationException e1) {
        /*
         * The open method failed because unable to obtain an RFCOMM
         * server channel.
         */
        return;
    } catch (IOException e2){
        /* The open method failed due to another IOException */
        return;
    }

    ServiceRecord record = localDev.getRecord(notifier);

    /*
     * Defining a rendering service.  acceptAndOpen() will
     * update the service class bits of the device later.
     */
    record.setDeviceServiceClasses(0x40000);

    /*
     * Update the service record to indicate accepting

```

```

    * clients--this step is optional.
    */
    updateServiceAvailability(0);
}

public void acceptClientConnections() {
    if (notifier = null){
        return;
    }
    try {
        while (!stop){
            /*
             * acceptAndOpen() waits for the next client to
             * connect to this service. The first time through the
             * loop, acceptAndOpen() adds the service record to
             * the SDDB and updates the service class bits of the
             * device.
             */
            try {
                StreamConnection clientConn
                    = (StreamConnection)notifier.acceptAndOpen();
            } catch (ServiceRegistrationException e1) {
                /*
                 * The acceptAndOpen method failed; possibly
                 * because the SDDB is full or violated constraints
                 * when modified record.
                 */
                return;
            } catch (IOException e) {
                continue;
            }
            if (clients < maxClients){
                /*
                 * Update the service record to indicate changed
                 * availability to potential clients.
                 */
                updateServiceAvailability(1);

                /*
                 * There would be code here to start up a thread
                 * to communicate with this client.
                 * When finished with this client, the thread closes
                 * clientConn and calls
                 * updateServiceAvailability(-1).

```



```

        */

    } else {
        /* More clients than allowed, so drop this new one */
        clientConn.close();
    }
}
} finally {

    /*
     * Releases the RFCOMM server channel and removes the service
     * record from the SDDB.
     */
    notifier.close();
}
}

/*
 * This method is synchronized so that only one thread at a
 * time is changing the service record and updating the count of
 * clients.
 */
synchronized boolean updateServiceAvailability(int changeInClients) {
    DataElement currAvail;

    clients = clients + changeInClients;
    switch (clients) {
    case 0:
        currAvail = fullyAvail;
        break;
    case 1:
        currAvail = halfAvail;
        break;
    case 2:
        currAvail = unAvail;
    }

    /*
     * Get the new service record that was created by
     * Connector.open for this server application.
     */
    ServiceRecord record = localDev.getRecord(notifier);

    /*
     * Add a ServiceAvailability attribute to the in-memory version of

```

```
    * the service record. The attrID for ServiceAvailability
    * is 0x0008.
    */
record.setAttributeValue(0x0008, currAvail);

/*
 * Update the service record in the SDDB to match the contents
 * of record. If record has not been added to the SDDB yet,
 * then updateRecord does nothing -- in this case, acceptAndOpen()
 * will add the modified record to the SDDB later.
 */
try {
    localDev.updateRecord(record);
} catch (ServiceRegistrationException e) {
    /* Unable to update the service record */
    return false;
}
return true;
}
}
```

Chapter 11 Logical Link Control and Adaptation Protocol (L2CAP)

11.1 Introduction

This chapter describes the L2CAP API, including the classes, methods and constants. L2CAP supports two types of connections, connection-oriented (bi-directional) and connectionless (uni-directional). All connections made using the `connect` service primitive provided by the L2CAP layer of the stack are connection-oriented. Connectionless data channels are established using the group communication concept provided by the L2CAP layer. This API does not support group communication and hence does not support connectionless channels.

11.2 API Overview

This section provides a brief description of the L2CAP API defined by this specification. The specification of the classes and methods are found in the Javadoc as part of this specification. The API supports only connection-oriented L2CAP channels.

An `L2CAPConnectionNotifier` notifies an L2CAP server when a client initiates a connection. Once the connection is established, an `L2CAPConnection` object is returned. The interface `L2CAPConnection` and `L2CAPConnectionNotifier` extends the `Connection` interface. This `L2CAPConnection` interface can be used to send data to and receive data from a remote device using the L2CAP protocol.

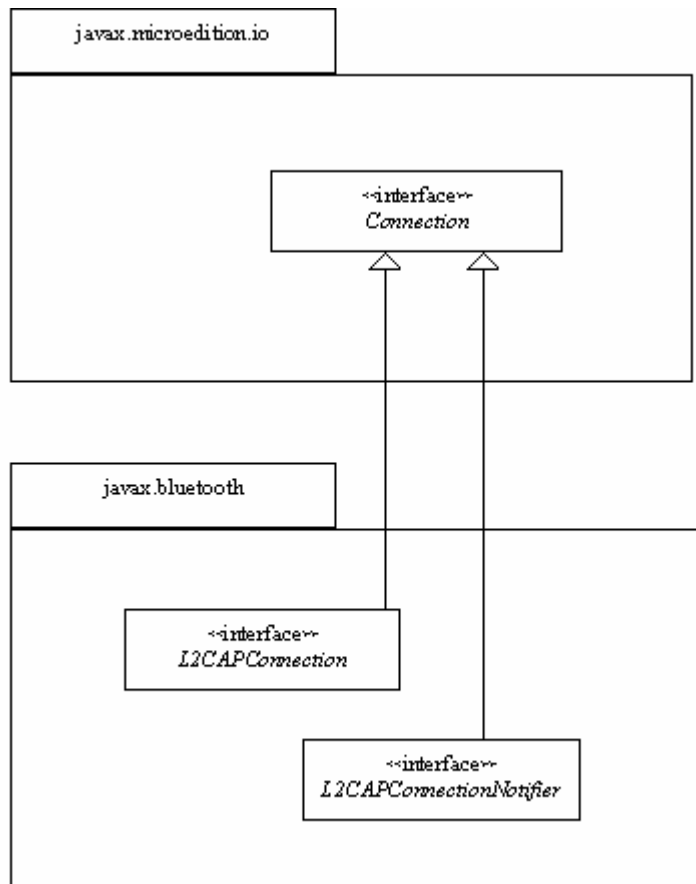


Figure 11-1 L2CAP in the Generic Connection Framework

11.2.1 Channel Configuration

Connection-oriented channels need to be configured once the connection is established. The channel configuration parameters that are negotiated between Bluetooth devices are:

- Maximum Transmission Unit (MTU) –The payload size (in bytes) that the sender of the request is capable of accepting.
- Flush Timeout –The amount of time for which the sender’s link controller/link manager will attempt to successfully transmit a packet before flushing the packet. A value of 0xFFFF indicates that the packet will be transmitted until it is acknowledged or until the ACL link terminates; this value provides a reliable communication link. L2CAP provides a full-duplex communication channel that delivers L2CAP protocol data units in an orderly manner. L2CAP does not provide any mechanism to secure the reliable transmission of its protocol data units. Instead, it relies upon the retransmission process in the baseband to support a sufficiently reliable communications channel for higher layers.
- Quality of Service (QoS) – This option describes the traffic flow; see [1] Part D, Sec 6.3.

This API assumes that:

- The default Flush Timeout value provided by the stack is used for the connection. The default value, defined in [1] Part D, Sec 6.2, is 0xFFFF. [Unfortunately, the default Flush timeout value is incompatible with the Bluetooth audio/video profiles—see Kumar, Kline & Thompson, p. 210.]
- The application can specify the incoming MTU that it would like to use for the connection. If an application does not specify this value, then the DEFAULT_MTU of 672 bytes or the Bluetooth stack max MTU is used, whichever is smaller. The application also can specify the MTU desired from the remote device, that is, the outgoing MTU. If the application does not specify this value, then it will be less than or equal to the remote device's incoming MTU advertised by it during channel configuration.
- Quality of Service parameters are not supported in this API. The Bluetooth stack determines the QoS values.

11.2.1.1 Maximum Transmission Unit (MTU)

The implementation is responsible for configuring the channel with the requested or default MTU before any read/write operations can take place on the connection. The ReceiveMTU is the maximum number of bytes that the local device can receive in a given payload. The TransmitMTU is the maximum number of bytes that the local device can send to the remote device in a given payload. If DevA is the local device and DevB is the remote device, we define the following variants of ReceiveMTU:

- ReceiveMTU_A – maximum payload size proposed by an application on DevA for L2CAP payloads received by DevA.
- ReceiveMTU_B – maximum payload size proposed by an application on DevB for L2CAP payloads received by DevB.
- ReceiveMTU_{AB} – maximum payload size agreed to by DevA and DevB for L2CAP payloads received by an application on DevA.

There are similar variants for TransmitMTU:

- TransmitMTU_A – maximum payload size proposed by an application on DevA for L2CAP payloads sent by DevA.
- TransmitMTU_B – maximum payload size proposed by an application on DevB for L2CAP payloads sent by DevB.
- TransmitMTU_{AB} – maximum payload size agreed to by DevA and DevB for L2CAP payloads sent by an application on DevA.

If ReceiveMTU_A ≥ TransmitMTU_B, then ReceiveMTU_{AB} ≤ ReceiveMTU_A. If ReceiveMTU_A < TransmitMTU_B, then the connection between DevA and DevB fails, or succeeds with ReceiveMTU_{AB} ≤ ReceiveMTU_A.

If TransmitMTU_A ≤ ReceiveMTU_B, then TransmitMTU_{AB} = TransmitMTU_A. If TransmitMTU_A > ReceiveMTU_B, then the connection between DevA and DevB fails, or succeeds with TransmitMTU_{AB} = ReceiveMTU_B.

When the application on the local device, DevA, calls

```
Connector.open("bt12cap://...;ReceiveMTU=1024;TransmitMTU=512"),
```

ReceiveMTU_A = 1024 and TransmitMTU_A = 512. When the application on the remote device, DevB calls

```
Connector.open("bt12cap://...;ReceiveMTU=2048;TransmitMTU=512")
```

ReceiveMTU_B = 2048 and TransmitMTU_B = 512. In this case, a connection can be formed between DevA and DevB with ReceiveMTU_{AB} ≤ 1024 and TransmitMTU_{AB} = 512.

This section describes how the MTU is configured by the implementation when a connection request is made. There are a number of possible cases:

1. The application specifies the ReceiveMTU_A and TransmitMTU_A. In this case, the implementation advertises the ReceiveMTU_A value in the configuration request to the remote device. If the remote device responds with a negative configuration response, the connection fails. If the remote device responds with a positive configuration response, the implementation waits for the configuration request from the remote device. When the local device receives a configuration request from the remote device, it compares the ReceiveMTU_B value in the incoming request to the TransmitMTU_A specified. If the maximum size the application plans to send, TransmitMTU_A, is less than or equal to the maximum size that the remote device can receive, ReceiveMTU_B, the connection succeeds; otherwise the connection fails.
2. The application specifies ReceiveMTU_A, but does not specify TransmitMTU_A. In this case, configuration with respect to the ReceiveMTU_A is similar to the above scenario. The TransmitMTU_{AB} will be less than or equal to the ReceiveMTU_B in the configuration request received from the remote device. The application should use the `getTransmitMTU()` method in `L2CAPConnection` interface to obtain the outgoing MTU value to avoid sending too much data.
3. The application does not specify ReceiveMTU_A, but specifies TransmitMTU_A. In this case, the implementation advertises ReceiveMTU_A as the smaller of the DEFAULT_MTU (672 bytes) and the Bluetooth stack maximum MTU to the remote device in the configuration request. (For example, if the Bluetooth stack maximum MTU is 512 bytes, the implementation will advertise 512 bytes to the remote device since 512 bytes is smaller than the DEFAULT_MTU. If the Bluetooth stack maximum MTU is 1024 bytes, the implementation advertises 672 bytes to the remote device since the DEFAULT_MTU is smaller.) The handling of TransmitMTU_A is similar to Case 1.
4. The application specifies neither the ReceiveMTU_A nor the TransmitMTU_A. In this case, the handling of ReceiveMTU_A is similar to case 3, and the handling of TransmitMTU_A is similar to Case 2.

11.3 L2CAP Connection Interface

The following sections describe the usage of the connection string provided by the GCF for the various types of L2CAP connections.

11.3.1 L2CAP Server and Client Connection URLs

The Augmented Backus-Naur Form (ABNF) for L2CAP server and client connection URLs is:

```

srvString = protocol colon slashes srvHost 0*7(srvParams)
cliString = protocol colon slashes cliHost 0*5(cliParams)

protocol = btl2cap

btl2cap = %d98.116.108.50.99.97.112           ; defines the literal btl2cap

cliHost = address colon psm
srvHost = "localhost" colon uuid

psm = 4*4(HEXDIG)
uuid = 1*32(HEXDIG)

colon = ":"
slashes = "/"
bool = "true" / "false"
address = 12*12(HEXDIG)
text = 1*( ALPHA / DIGIT / SP / "-" / "_" )

name = ";name=" text                       ; see constraints below
master = ";master=" bool                   ; see constraints below
encrypt = ";encrypt=" bool                 ; see constraints below
authorize = ";authorize=" bool             ; see constraints below
authenticate = ";authenticate=" bool       ; see constraints below
receiveMTU = ";receiveMTU=" 1*(DIGIT)
transmitMTU = ";transmitMTU=" 1*(DIGIT)
cliParams = master / encrypt / authenticate / receiveMTU / transmitMTU
srvParams = name / master / encrypt / authorize / authenticate
            / receiveMTU / transmitMTU

```

The core rules from the RFC 2234 [11] that are being referenced are: SP for space, ALPHA for lowercase and uppercase alphabets, DIGIT for digits zero through nine, and HEXDIG for hexadecimal digits (0-9, a-f, A-F).

The RFC 2234 specifies the values of literal text string as being case-insensitive. For example, the rule master in the above ABNF allows all of the following candidates as legal (“;MASTER=”, “;master=”, “;MaStEr=”) values.

The string produced from the srvString and cliString rules must not contain both the substrings “;authenticate=false” and “;encrypt=true”. For the string produced from srvString, it also must not contain both the substrings “;authenticate=false” and “;authorize=true”. Additionally, the string produced from either of the srvString or cliString rules must not contain one of the params (name, ...) repeated more than once. This constraint is being specified here because ABNF does not contain a rule that would achieve the desired functionality.

The `psm` in the preceding connection string description represents the Protocol Service Multiplexor (PSM) value for the service. L2CAP server applications on a device can identify themselves with a PSM value, which is assigned by the implementation. Legal PSM values are in the range (0x1001..0xFFFF), and the least significant byte must be odd and all other bytes must be even.

The `receiveMTU` and `transmitMTU` in the preceding connection string represent the ReceiveMTU, the maximum payload size proposed for reception by the client (server), and TransmitMTU, the maximum payload size proposed for sending by the client (server). The other parameters are explained in Chapter 8.

Pseudo code to open an L2CAP client connection is shown next:

```
try {
    L2CAPConnection client = (L2CAPConnection)
        Connector.open("bt12cap://0050CD00321B:1001;ReceiveMTU=512;
                        TransmitMTU=512");
} catch (...)
```

The call to `Connector.open()` returns only when either the connection is successfully established or when the connection fails. If authentication is needed, `Connector.open()` blocks until the process completes.

Pseudo code to open an L2CAP server connection is shown next:

```
try {
    L2CAPConnectionNotifier server = (L2CAPConnectionNotifier)
        Connector.open("bt12cap://localhost:3B9FA89520078C303355AAA694238F08;
                        name=L2CAPEx");
    L2CAPConnection con = (L2CAPConnection)server.acceptAndOpen();
} catch (...)
```

For a server, the service record is created when `Connector.open()` is called, and the call to `acceptAndOpen()` causes the implementation to add the service record to the SDDB. A `ServiceRegistrationException` is thrown if the registration fails. The next section describes the L2CAP service record that this API uses.

If the client or server application requests a ReceiveMTU value greater than that which the stack can provide, then the implementation should cause the `Connector.open()` call to fail. The application must use `LocalDevice.getProperty("bluetooth.l2cap.receiveMTU.max")` to obtain the maximum MTU supported by the stack. The application can specify a ReceiveMTU value less than `StackMTU`, but it must be greater than or equal to `MINIMUM_MTU` (48 bytes) for the connection to succeed. For servers, `acceptAndOpen()` blocks until a successful connection to a client can be established. Once the connection is established, the application can obtain the ReceiveMTU value for the connection using the method `getReceiveMTU()` in the `L2CAPConnection` interface. If a client includes the parameter `ReceiveMTUA` in its connection string, then either

- `Connector.open()` succeeds, and the value returned by `getReceiveMTU()` for that connection must be less than or equal to `ReceiveMTUA`
- `Connector.open()` fails, and throws an exception

If a server includes the parameter `ReceiveMTUB` in its connection string, then when `acceptAndOpen()` returns a connection, the value returned by `getReceiveMTU()` for that connection must be less than or equal to `ReceiveMTUB`.

In addition to the `getReceiveMTU()` method, the `L2CAPConnection` interface also includes a `getTransmitMTU()` method. This method can be used once a connection is established to determine the maximum number of bytes that can be transmitted in an L2CAP payload over this connection. If a client includes the parameter `TransmitMTUA` in its connection string, then either

- `Connector.open()` succeeds, and the value returned by `getTransmitMTU()` for that connection must be equal to `TransmitMTUA`
- `Connector.open()` fails, and throws an exception

If a server includes the parameter `TransmitMTUB` in its connection string, then when `acceptAndOpen()` returns a connection, the value returned by `getTransmitMTU()` for that connection must be equal to `TransmitMTUB`.

If a connection fails, a `BluetoothConnectionException` must be thrown by the implementation. This exception is a subclass of `IOException`, and applications can obtain the cause of failure using the `getStatus()` method of the class. If any of the arguments to `Connector.open()` (client or server) are not legal, an `IllegalArgumentException` must be thrown by the implementation.

A Bluetooth API implementation MAY support multiple connections to the same L2CAP service. If this is the case, the L2CAP server application can accept multiple connections from different clients by calling the `acceptAndOpen()` method repeatedly. A new `L2CAPConnection` object MUST then be created for each connection accepted. This object MUST represent a particular connection to a remote device and there MUST be no interference with other connections to the same L2CAP PSM (Protocol Service Multiplexor). In other words, data from different connections is not mixed. At the same time, each client accesses the same service record and connects to the service using the same L2CAP PSM.

If a Bluetooth API implementation does not support multiple connections to the same L2CAP service, the `acceptAndOpen()` method MUST throw `BluetoothConnectionException` with the `BluetoothConnectionException.NO_RESOURCES` error code.

Note that once an application invokes `close()` on any `L2CAPConnectionNotifier` instance, all pending `acceptAndOpen()` methods that have been invoked previously on that instance MUST throw `InterruptedIOException`. This mechanism provides an application with the means to cancel any outstanding `acceptAndOpen()` method calls.

11.3.2 L2CAP Service Record

When an L2CAP server application calls

```
Connector.open("bt12cap://localhost:3B9FA89520078C303355AAA694238F08;name=An
L2CAP Server")
```

a service record is created in a manner similar to that described for serial port services. Table 11-1 shows the L2CAP service record; the rows and columns are interpreted as described in Table 10-1.

There are several differences between Table 11-1 and Table 10-1:

- SerialPort has been removed from the ServiceClassIDList;
- RFCOMM has been removed from the ProtocolDescriptorList; and
- the BluetoothProfileDescriptorList has been removed.

The RFCOMM protocol is closely aligned with the SPP. However, L2CAP has no such closely aligned profile. If new Bluetooth profiles are developed that operate directly over L2CAP, then a server application could add a BluetoothProfileDescriptorList that includes such profiles to the L2CAP service record.

As was the case for the SPP, the API implementation adds all the mandatory rows of the service record for L2CAP; L2CAP server applications optionally may add service attributes to the service record.

Table 11-1 Service Record Template for L2CAP-based Services

Item	Definition	Type/Size	Value	AttrID	M/O	C/F	Notes
ServiceRecordHandle	Uniquely identifies each record in a SDDB.	Unsigned int32	Varies	See [7]	M	F	Attr+Value added by the implementation when the record is added to the SDDB.
ServiceClassIDList		DATSEQ		See [7]	M	C	Attr+Value inserted by implementation.
ServiceClass0	Used by server application to identify type of L2CAP service	UUID 128bit	Varies		O	C	Obtained from the connection string argument to Connector.open() and inserted by the implementation.
ProtocolDescriptorList		DATSEQ		See [7]	M	C	Attr+Value inserted by implementation.
Protocol0	L2CAP	UUID 16bit	See [7]		M	F	DATSEQ inserted by implementation.
ProtocolSpecificParameter0	PSM value	unsigned int16	Varies		M	F	Value assigned and inserted by the implementation. Used by btl2cap clients to identify the service to connect to.
ServiceName	Displayable text name	String	Varies	0 + 0x0100	O	C	The connection string may contain a name parameter (e.g., name=An L2CAP Server). If so, the parameter value is used as the attribute value. Specifies the ServiceName in the primary language of the service record.

Item	Definition	Type/ Size	Value	AttrID	M/O	C/F	Notes
ServiceName	Displayable text name in another natural language	String	Varies	0 + base for another language	O	C	Attr+Value optionally inserted by server application
LanguageBaseAttributeIDList		DATSEQ		See [7]	O	C	Attr+Value optionally inserted by server application
ServiceDescription	Displayable text name	String	Varies	1 + language base	O	C	Attr+Value optionally inserted by server application
ServiceAvailability	Ability of server to accept new clients	unsigned int8	Varies.	See [7]	O	C	Attr+Value optionally inserted by server application
User Defined Attribute #i	User Defined	Varies		Varies	O	C	Attr+Value optionally inserted by server application

11.4 L2CAP Connection Classes

The following subsections provide a brief overview of the classes that are used in the L2CAP API. The specification of the classes and methods are found in the Javadocs distributed as part of this specification.

11.4.1 interface `javax.bluetooth.L2CAPConnection` extends `javax.microedition.io.Connection`

This interface represents L2CAP connections. It contains methods to obtain the MTUs used by a connection, and to send and receive data.

11.4.2 interface `javax.bluetooth.L2CAPConnectionNotifier` extends `javax.microedition.io.Connection`

The only method in this interface is `acceptAndOpen()`, which is used by L2CAP servers to listen for incoming client connections.

11.4.3 class `javax.bluetooth.BluetoothConnectionException` extends `java.io.IOException`

This exception is thrown when a Bluetooth connection (RFCOMM or L2CAP) cannot be established successfully. The `getStatus()` method of this class will indicate the reason for the connection failure.

11.5 Example Code

This is the sample code for L2CAP client and server applications.

11.5.1 Client Application

```
/**
 * The L2CAPPrinterClient will make a connection using the connection string
 * provided and send a message to the server to print the data sent.
 */
class L2CAPPrinterClient {

    /**
     * Keeps the connection string in case the application would like to make
     * multiple connections to a printer.
     */
    private String serverConnectionString;

    /**
     * Creates an L2CAPPrinterClient object that will allow an application to
     * send multiple print jobs to a Bluetooth printer.
     *
     * @param server the connection string used to connect to the server
     */
    L2CAPPrinterClient(String server) {
        serverConnectionString = server;
    }

    /**
     * Sends a print job to the server. The print job will print the message
     * provided.
     *
     * @param msg a non-null message to print
     */
}
```

```

*
* @return true if the message was printed; false if the message was not
* printed
*/
public boolean printJob(String msg) {
    L2CAPConnection con = null;
    byte[] data = null;
    int index = 0;
    byte[] temp = null;

    try {
        /*
         * Create a connection to the server
         */
        con = (L2CAPConnection)Connector.open(serverConnectionString);

        /*
         * Determine the maximum amount of data I can send to the server.
         */
        int MaxOutBufSize = con.getTransmitMTU();
        temp = new byte[MaxOutBufSize];

        /*
         * Send as many packets as are needed to send the data
         */
        data = msg.getBytes();
        while (index < data.length) {

            /*
             * Determine if this is the last packet to send or if there
             * will be additional packets
             */
            if ((data.length - index) < MaxOutBufSize) {
                temp = new byte[data.length - index];
                System.arraycopy(data, index, temp, 0,
                               data.length - index);
            } else {
                temp = new byte[MaxOutBufSize];
                System.arraycopy(data, index, temp, 0, MaxOutBufSize);
            }

            con.send(temp);
            index += MaxOutBufSize;
        }

        /*

```

```

        * Close the connection to the server
        */
        con.close();
    } catch (BluetoothConnectionException e) {
        System.out.println("Failed to print message");
        System.out.println("\tBluetoothConnectionException: " +
                            e.getMessage());
        System.out.println("\tStatus: " + e.getStatus());
    } catch (IOException e) {
        System.out.println("Failed to print message");
        System.out.println("\tIOException: " + e.getMessage());
        return false;
    }
    return true;
}
}

```

11.5.2 Server Application

The following sample code illustrates L2CAP servers:

```

try {
    L2CAPConnectionNotifier server = (L2CAPConnectionNotifier)
        Connector.open("bt12cap://localhost:3B9FA89520078C303355AAA694238F
08;name=L2CAP Server1");
    L2CAPConnection cliCon = (L2CAPConnection)server.acceptAndOpen();
} catch (IOException e) {
    /* Handle the failure to setup a connection. */
}
    /* Perform server functions. */

```

Chapter 12 Object Exchange Protocol (OBEX)

12.1 Introduction

This chapter describes the OBject EXchange protocol (OBEX) API. Section 12.2 provides an overview of the OBEX protocol. Section 12.3 describes how to create and use client and server connection objects and how this API fits into the GCF. Section 12.4 describes the connection strings used with the GCF to create OBEX client and server connections. Section 12.5 describes how authentication works in this OBEX API. Section 12.6 provides a short description of each class and interface of the API. The final section provides an example client and server application.

12.2 OBEX Overview

OBEX is a protocol developed by the Infrared Data Association (IrDA[®] ⁴; see <http://www.irda.org>) for “pushing” or “pulling” objects to and from clients and servers. OBEX performs object transfer by establishing an OBEX session. An OBEX session begins by establishing an OBEX connection with a CONNECT request. The session ends with a DISCONNECT request. Between the CONNECT and DISCONNECT requests, the client may GET objects from the server or PUT objects to the server. The objects could be files, vCards (a data format for electronic business cards), byte arrays and so on. The OBEX client also might change the active folder or directory on the server by issuing the SETPATH request.

OBEX scales easily from small objects to large ones. OBEX accomplishes this by sending an object in multiple OBEX packets. When a client issues a request to PUT or GET a large object, it starts an OBEX operation. The OBEX operation continues until the entire object is sent to a server, the entire object is retrieved from the server, or an error occurs. To complete a PUT operation, the client (the application or the OBEX protocol stack) breaks the object into small pieces and sends each piece individually. The client does not send a subsequent piece until the previous piece is acknowledged. GET operations work in a similar way, with the server breaking the object into smaller pieces. This packetization may be transparent to an application.

OBEX, like HTTP, provides methods to pass additional information between the client and server using headers. Unlike HTTP headers that are strings, OBEX headers are byte values or byte sequences. OBEX headers include length, name, description type and even HTTP-specific headers. There also are 64 user-defined headers and headers for authentication, application multiplexing and so on.

⁴ IrDA is a registered trademark of the Infrared Data Association.

12.3 API Overview

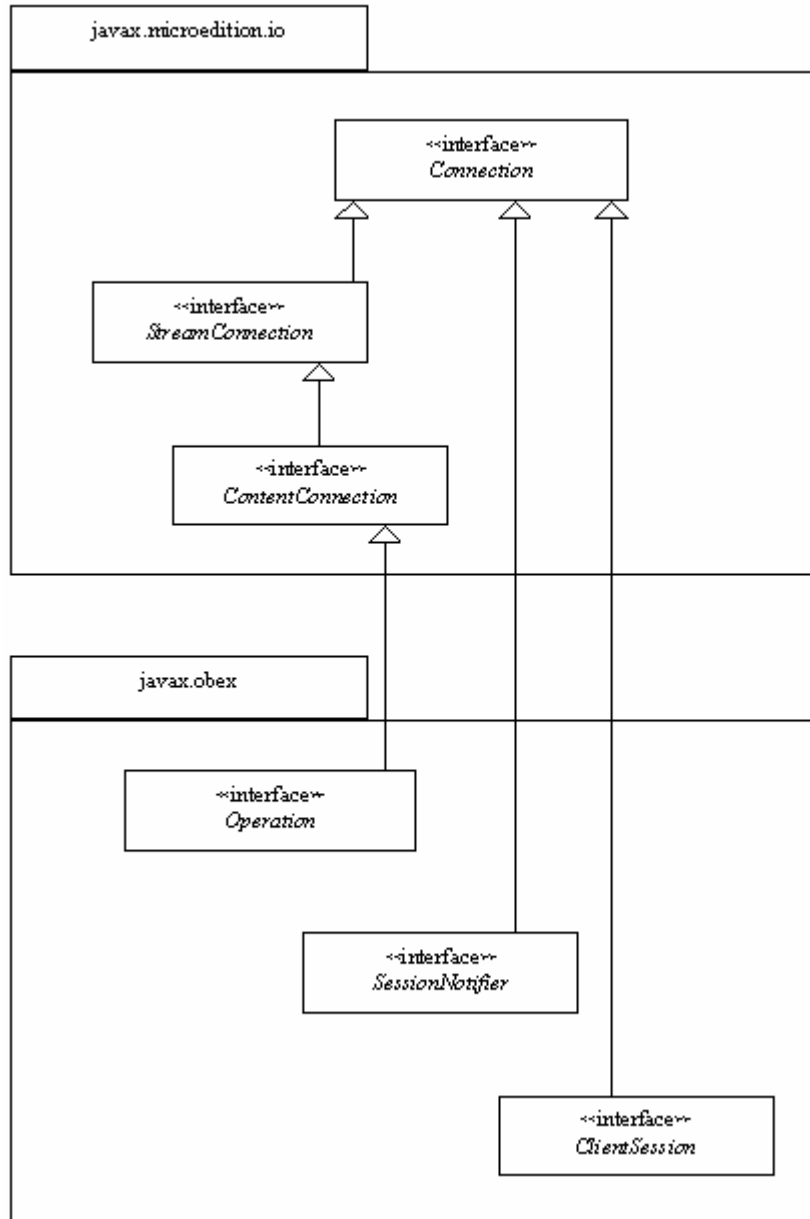


Figure 12-1 OBEX in the Generic Connection Framework

The OBEX API allows an application to complete OBEX operations between a client and a server. This API does not address connectionless OBEX as defined in the OBEX specification. This OBEX

API supports the following OBEX operations:

- CONNECT
- PUT
- GET
- SETPATH
- ABORT
- CREATE-EMPTY
- PUT-DELETE
- DISCONNECT

As stated in Section 12.2, OBEX packets consist of a collection of headers. The following OBEX headers are accessible in this API.

Table 12-1 OBEX Headers in the OBEX API

Header Name	How to Manipulate the Header in the API
Count	HeaderSet.getHeader(), HeaderSet.setHeader()
Name	HeaderSet.getHeader(), HeaderSet.setHeader()
Type	HeaderSet.getHeader(), HeaderSet.setHeader()
Length	HeaderSet.getHeader(), HeaderSet.setHeader()
Time	HeaderSet.getHeader(), HeaderSet.setHeader()
Description	HeaderSet.getHeader(), HeaderSet.setHeader()
Target	HeaderSet.getHeader(), HeaderSet.setHeader()
HTTP	HeaderSet.getHeader(), HeaderSet.setHeader()
Body	Operation.openInputStream(), Operation.openDataInputStream(), Operation.openOutputStream(), Operation.openDataOutputStream()
End of Body	Operation.openInputStream(), Operation.openDataInputStream(), Operation.openOutputStream(), Operation.openDataOutputStream()
Who	HeaderSet.getHeader(), HeaderSet.setHeader()
Connection ID	ClientSession.setConnectionID(), ClientSession.getConnectionID(), ServerRequestHandler.setConnectionID(), ServerRequestHandler.getConnectionID()
Application Parameters	HeaderSet.getHeader(), HeaderSet.setHeader()
Authentication Challenge	HeaderSet.createAuthenticationChallenge(), Authenticator.getPasswordAuthentication()
Authentication Response	Authenticator.getPasswordAuthentication(), Authenticator.validatePassword()
Object Class	HeaderSet.getHeader(), HeaderSet.setHeader()
User Defined	HeaderSet.getHeader(), HeaderSet.setHeader()

Two different multiplexing models are defined in the OBEX specification. This OBEX API is designed to perform multiplexing at the transport layer. This multiplexing model relies on the multiplexing capabilities of the transport layer protocol.

As found in the CLDC specification [3], the following exceptions may be thrown by a call to `Connector.open()`.

- `ConnectionNotFoundException` – thrown when the scheme used is not legal or if the protocol type does not exist
- `IllegalArgumentException` – thrown when the parameters of the connection string are unrecognized
- `IOException` – thrown when the `{target}` cannot be connected to.

12.3.1 Client Connection

To create a client connection for OBEX, the client application uses the appropriate string defined in Section 12.4 and passes this string to `Connector.open()`. `Connector.open()` returns a `javax.obex.ClientSession` object.

To establish an OBEX connection, the client creates a `javax.obex.HeaderSet` object using the `createHeaderSet()` method in the `ClientSession` interface. Using the `HeaderSet` object, the client can specify header values for the `CONNECT` request. An OBEX `CONNECT` packet also contains the OBEX version number, flags, and maximum packet length, which are maintained by the implementation. To complete a `CONNECT` request, the client supplies the `HeaderSet` object to the `connect()` method in the `ClientSession` interface. After the `CONNECT` request finishes, the OBEX headers received from the server are returned to the application. If no header object is provided as an input parameter, a `javax.obex.HeaderSet` object still is returned from the `connect()` method. To determine whether or not the request succeeded, the client calls the `getResponseCode()` method in the `HeaderSet` interface. This method returns the response code sent by the server, defined in the `javax.obex.ResponseCodes` class.

A `DISCONNECT` request is completed in the same way as a `CONNECT` request except that the `disconnect()` method is called instead of `connect()`. If the `javax.obex.HeaderSet` object contains more headers than can fit in one OBEX packet, a `java.io.IOException` is thrown.

To complete a `SETPATH` operation, the client calls the `setPath()` method in the `ClientSession` object. To specify the name of the target directory, set the name header to the desired target by calling `setHeader()` on the `HeaderSet` provided to `setPath()`. The client also may specify whether or not the server should back up one directory level before applying the name and whether or not the server should create the directory if it does not already exist. If the header is too large to send in one OBEX packet, a `java.io.IOException` is thrown.

To complete a `PUT` or `GET` operation, the client creates a `javax.obex.HeaderSet` object with `createHeaderSet()`. After specifying the header values, the client calls the `put()` or `get()` method in the `javax.obex.ClientSession` object. The implementation sends the headers to the server and receives the reply. The `put()` and `get()` methods return the `javax.obex.Operation` object. With this object, the client can determine whether or not the request succeeded. If the request succeeded, the client may put or get a data object using output or input streams, respectively. When the client is finished, the appropriate stream should be closed. To `ABORT` a `PUT` or `GET` request, the client calls the

`abort()` method in the `javax.obex.Operation` object. The `abort()` method closes all input and output streams and ends the operation by calling the `close()` method on the `Operation` object.

12.3.2 Server Connection

To create a server connection, the server provides a string to `Connector.open()` as specified in Section 12.4. `Connector.open()` returns a `javax.obex.SessionNotifier` object. The `SessionNotifier` object waits for a client to create a transport layer connection by calling `acceptAndOpen()`. A single server may serve multiple clients by calling `acceptAndOpen()` multiple times. The `acceptAndOpen()` method returns a `javax.microedition.io.Connection` object. This object represents a connection to a single client. The server specifies the request handler that will respond to OBEX requests from the client by passing the `javax.obex.ServerRequestHandler` object to `acceptAndOpen()`.

Note that once an application invokes `close()` on any `SessionNotifier` instance, all pending `acceptAndOpen()` methods that have been invoked previously on that instance **MUST** throw `InterruptedIOException`. This mechanism provides an application with the means to cancel any outstanding `acceptAndOpen()` method calls.

The server must create a new class that extends the `javax.obex.ServerRequestHandler` class. The server needs to implement only those methods for the OBEX requests that it supports. For example, if the server does not support SETPATH requests, it need not override the `onSetPath()` method. As requests are received, the appropriate methods are called and the server processes the requests. When the server is finished, it must return the appropriate final response code defined in the `javax.obex.ResponseCodes` class.

Server applications should not call the `abort()` method; if a server applications calls `abort()` the `javax.obex.Operation` argument that is part of the `onGet()` and `onPut()` methods throws a `java.io.IOException`.

If the server implementation is not able to pass all the headers that are specified by the server application in a reply, then the server implementation returns an `OBEX_HTTP_REQ_TOO_LARGE`. If the server application returns a response code that is not defined in the `javax.obex.ResponseCodes` class, then the server implementation sends an `OBEX_HTTP_INTERNAL_ERROR` response to the client.

12.4 Connection String Description

To create an OBEX client or server connection object, the application uses the GCF, following the same format as other connection strings in that framework:

```
{protocol}:[{target}][{params}]
```

The definition of `{protocol}`, `{target}`, and `{params}` depends on the transport layer that OBEX uses. In general, `{protocol}` is defined to be `{transport}obex`, but OBEX over RFCOMM is an exception to this rule and is discussed next.

These protocols should be implemented based on the actual transport mechanisms available on the device. For example, if a device with only an infrared port implements this OBEX API set, then only the "irdaobex" protocol needs to be implemented. Calling `Connector.open()` on an unsupported transport protocol throws a `ConnectionNotFoundException`.

12.4.1 OBEX Over RFCOMM

The `{protocol}` for OBEX over RFCOMM is defined as `btgoep` because this is the implementation of the Generic Object Exchange Profile (GOEP) defined by the Bluetooth SIG. The `{target}` for client connections is the Bluetooth address and channel identifier of the device that the client wishes to connect to, separated by a colon (for example, `0050C000321B:4`). The `{target}` for a server always is `localhost` followed by a colon and the service class UUID. The valid `{params}` for OBEX over RFCOMM are `authenticate`, `encrypt`, `authorize`, `name` and `master`. The default value for all of these `{params}` is `false` (`true` is the only other valid value).

The following is a valid client connection string for OBEX over RFCOMM:

```
btgoep://0050C000321B:12
```

The following is a valid server connection string for OBEX over RFCOMM:

```
btgoep://localhost:12AF51A9030C4B2937407F8C9ECB238A
```

When an application passes a valid OBEX over RFCOMM server connection string to `Connector.open()`, a Bluetooth service record is created. Table 12-2 shows the GOEP service record. Note that this service record contains the OBEX protocol in its `ProtocolDescriptorList`.

Table 12-2 Service Record Template for GOEP-based Services

Item	Definition	Type/ Size	Value	AttrID	M/O	C/F	Notes
<code>ServiceRecordHandle</code>	Uniquely identifies each record in a SDDB	Unsigned int32	Varies	See [7]	M	F	Attr+Value added by the implementation when the record is added to the SDDB.
<code>ServiceClassIDList</code>		DATSEQ		See [7]	M	C	Attr+Value inserted by implementation.
<code>ServiceClass0</code>	Used by app to identify type of OBEX service	UUID 128bit	Varies		O	C	Obtained from the string argument to <code>Connector.open()</code> and inserted by the implementation.
<code>ProtocolDescriptorList</code>		DATSEQ		See [7]	M	C	Attr+Value inserted by implementation.
<code>Protocol0</code>	L2CAP	UUID 16bit	See [7]		M	F	DATSEQ inserted by implementation.
<code>Protocol1</code>	RFCOMM	UUID 16bit	See [7]		M	F	DATSEQ inserted by implementation.

Item	Definition	Type/ Size	Value	AttrID	M/O	C/F	Notes
ProtocolSpecific Parameter0	Server Channel	unsigned int8	Varies; legal options are 1-30		M	F	Value obtained from the stack by implementation & inserted by the implementation. Used by btgoep clients to identify the service to connect to.
Protocol2	OBEX	UUID 16bit	See [7]		M	F	DATSEQ inserted by implementation.
ServiceName	Displayable text name	String	Varies	0 + 0x0100	O	C	The connection string may contain a name parameter. If so, the parameter value is used as the attribute value. This is the ServiceName in the primary language of the service record.
ServiceName	Displayable text name in another natural language	String	Varies	0 + base for another language	O	C	Attr+Value optionally inserted by server application. This is the ServiceName in one of the other languages used in this service record.
LanguageBaseAttributeIDList		DATSEQ		See [7]	O	C	Attr+Value optionally inserted by server application
ServiceDescription	Displayable text name	String	Varies	1 + language base	O	C	Attr+Value optionally inserted by server application
ServiceAvailability	Ability of server to accept new clients	Unsigned int8	Varies.	See [7]	O	C	Attr+Value optionally inserted by server application
User Defined Attribute #i	User Defined	Varies		Varies	O	C	Attr+Value optionally inserted by server application

A pair of related objects represents an OBEX service:

- 1 An object that implements the `javax.obex.SessionNotifier` interface and listens for client connections to this service; and
- 2 An object that implements the `ServiceRecord` interface. This object describes this service and its connection parameters to client devices.

12.4.2 OBEX Over TCP/IP

If OBEX uses TCP/IP as its transport protocol, the `{protocol}` is `tcpobex`. For an OBEX client, the `{target}` is the IP address of the server followed by a colon and port number. (for example,

12.34.56.100:5005). If no port number is specified, port number 650 is used (this is the port number reserved for OBEX by IANA, the Internet Assigned Numbers Authority). A server's `{target}` is a colon followed by the port number (for example, `:5005`). If no port number is given, port number 650 is opened by default. There are no valid `{params}` for OBEX over TCP/IP.

The following are valid client connection strings for OBEX over TCP/IP:

```
tcpobex://132.53.12.154:5005
```

```
tcpobex://132.53.12.154
```

The first string creates a client that connects to port 5005. The second string creates a client that connects to port 650.

The following are valid server connection strings for OBEX over TCP/IP:

```
tcpobex://:5005
```

```
tcpobex://
```

The first string creates a server that listens on port 5005. The second string creates a server that listens on port 650.

12.4.3 OBEX Over IrDA

If OBEX uses IrDA's Tiny TP as a transport protocol, the `{protocol}` is `irdaobex`. For OBEX clients, the `{target}` begins with `discover`, followed by additional parameters, if necessary. For OBEX servers, the `{target}` begins with `localhost`.

12.4.3.1 Device Discovery Identifier

When `{target}` begins with `discover`, the IrDA protocol stack initiates a device discovery to determine what infrared devices are in range. If more than one device is discovered, the implementation attempts to connect to each of them until a successful connection and service query are completed. If no acceptable devices are discovered, the discovery process is repeated for an implementation-specific period of time before reporting failure to the application.

IrDA stack implementations may “cache” previously discovered devices. If a list of previously discovered devices exists, the implementation may attempt connections to those devices. However, if the connection attempt fails, implementations must revert to an actual discovery attempt, as just described, before reporting failure to the application.

`discover` may be followed by a “.” and a multi-byte hexadecimal representation of required service hints provided by IrLAP during the discovery process. Hint bits provided by this semantic are used to limit connection attempts to only those devices with the specified hint bits set. If multiple hint bits are provided, all bits must be present for a remote device. For example, `discover.08` limits connection attempts to devices with the “Printer” hint bit set, `discover.0110` limits connection attempts to devices with both the “Telephony” and “Modem” hint bits set. (Hint bits are described in [8] Section 3.4.1.1 and listed in [9].) IrDA-related specifications can be found at <http://www.irda.org/standards/specifications.asp>.

Note that the “Extension” bit (0x80) of each byte is ignored. At the time of this writing, only two bytes of service hints are defined by [8], but more might be defined in the future, so there is no boundary on the number of hint bits that may be provided.

Applications should use caution when requiring specific hint bits in client connections. Hint bits are not a reliable means for determining a device’s type or its available services. By requiring certain hint bits, applications might unnecessarily limit interoperability with remote devices that, for whatever reason, have failed to set those hint bits.

12.4.3.2 Target Identifier for OBEX Servers

To indicate availability of a service, {target} begins with localhost. localhost optionally is followed by a set of hint bits using the same mechanism as the discover target just described (“.” followed by one or more hint bytes). The hint bits specified using this mechanism are added to the hint bits already set on the server device. Several applications may specify the same hint bit, which will remain set until the last service that specifies that bit is closed. The default OBEX hint bit, 02000, is set automatically when opening an irdaobex server connection, regardless of whether or not it is explicitly specified by the application.

12.4.3.3 Service Identification

OBEX over IrDA allows the definition of IAS class names in the Connector.open() string via the {params} section. The {params} has the name of “ias” and has the value of the list of IAS class names. Individual class names are separated by “,”.

For example, a connector string of:

```
irdaobex://discover;ias=MyAppOBEX,OBEX,OBEX:IrXfer
```

specifies that the implementation should discover devices and attempt to query services based on IAS class names of MyAppOBEX, OBEX, and OBEX:IrXfer.

If a list of service names is not specified, the two predefined OBEX service names are attempted by default. These names are OBEX and OBEX:IrXfer.

12.4.4 OBEX Server and Client Connection URLs

The Augmented Backus-Naur Form (ABNF) for OBEX server and client connection URLs is :

```
conString = tcpObex / irdaObex / btObex
```

```
btObex = btSrvString | btCliString
```

```
tcpObex = tcpSrvString | tcpCliString
```

```
irdaObex = irdaSrvString | irdaCliString
```

```
btgoep = %d98.116.103.111.101.112 ; defines the literal btgoep
```

```

tcpobex = %d116.99.112.111.98.101.120      ; defines the literal tcpobex
irdaobex = %d105.114.100.97.111.98.101.120 ; defines the literal irdaobex

tcpCliString = tcpobex colon slashes tcpHost
tcpSrvString = tcpobex colon slashes 0*1(colon ipPort)
ipPort = 1*(DIGIT)
ipAddress = 3*3(%d0-255 ".") (%d0-255)
  0      ipName = 1*( hostLabel "." ) topLabel
  1      topLabel = ALPHA | ALPHA *( alphaNum | "-" ) alphaNum
  2      hostLabel = alphaNum | alphaNum *( alphaNum | "-" ) alphaNum
tcpHost = ipName 0*1(colon ipPort) | ipAddress 0*1(colon ipPort)

btSrvString = btgoep colon slashes btSrvHost 0*5(btSrvParams)
btCliString = btgoep colon slashes btCliHost 0*3(btCliParams)

channel = %d1-30
uuid = 1*32(HEXDIG)
bool = "true" / "false"
name = ";name=" text ; see constraints below
btAddress = 12*12(HEXDIG)
master = ";master=" bool
encrypt = ";encrypt=" bool ; see constraints below
text = 1*( ALPHA / DIGIT / SP / "-" / "_" )
authorize = ";authorize=" bool ; see constraints below
authenticate = ";authenticate=" bool ; see constraints below

btCliParams = master / encrypt / authenticate
btSrvParams = name / master / encrypt / authorize / authenticate

btCliHost = btAddress colon channel
btSrvHost = "localhost" colon uuid

irdaSrvString = irdaobex colon slashes irdaSrvHost 0*1(irdaParams)
irdaCliString = irdaobex colon slashes irdaCliHost 0*1(irdaParams)
irdaSrvHost = "localhost" 0*1("." 1*(HEXDIG))
irdaCliHost = "discover" 0*1("." 1*(HEXDIG))
irdaParams = ";ias=" 1*1(irdaClassName) 0*1(", " 1*1(irdaClassName))
irdaClassName = 1*60(irdaClassOctet); IrLMP sec. 4.3.1 says "The maximum length of
; a class name is 60 octets."

irdaClassOctet = unescapedChar / escapedOctet
unescapedChar = ALPHA / DIGIT / colon
escapedOctet = "%" HEXDIG HEXDIG

colon = ":"
slashes = "/"
alphaNum = ALPHA | DIGIT

```


(where RFC 2234 defines the following in the expected way:

```
ALPHA      = %x41-5A / %x61-7A ; that is, A-Z / a-z
DIGIT     = %x30-39 ; that is 0-9
HEXDIG    = DIGIT / "A" / "B" / "C" / "D" / "E" / "F")
```

Examples of valid client connection strings are as follows :

```
irdaobex://discover;ias=MyAppOBEX,OBEX,OBEX:IrXfer
irdaobex://discover.02000;ias=MyAppOBEX,OBEX,OBEX:IrXfer
irdaobex://discover.0D
irdaobex://discover;ias=MyAppOBEX,Comma%2CinThisName
```

(The ‘,’ separates the two class names; the second class name uses the escapedOctet syntax to include a comma in the name)

```
irdaobex://discover;ias=%3F%2a%2F%5B%7b%7D
```

(The escaped encoding MUST be used to encode octets that are not alphanumeric or colon.)

```
irdaobex://discover;ias=MyAppOBE%58,OBE%58,OBE%58:Ir%58fer
```

(The escaped encoding MAY be used to encode an alphanumeric character such as “X”).

Examples of client connection strings that are NOT valid are as follows :

```
irdaobex://addr.3A08C572
irdaobex://discover;ias=?*/[{} (These characters can only be
entered in escaped encoding; see above.)
irdaobex://discover;ias=MyAppOB%X (X is not a hex digit so
escaped encoding syntax violated.)
```

Examples of valid server connection strings are as follows :

```
irdaobex://localhost.02000
irdaobex://localhost
irdaobex://localhost;ias=MyAppOBEX,OBEX,OBEX:IrXfer
irdaobex://localhost;ias=MyAppOBEX,Comma%2CinThisName
irdaobex://localhost;ias=%3F%2a%2F%5B%7b%7D
irdaobex://localhost.0D
```

The core rules from the RFC 2234 [11] that are being referenced are: SP for space, ALPHA for lowercase and uppercase alphabets, DIGIT for digits zero through nine, and HEXDIG for hexadecimal digits (0-9, a-f, A-F).

The RFC 2234 specifies the values of literal text string as being case-insensitive. For example, the rule `master` in the above ABNF allows all of the following candidates as legal values :

```
“;MASTER=”
“;master=”
“;MaStEr=”)
```

The string produced from the `srvString` and `cliString` rules must not contain the substrings “;authenticate=false” and “;encrypt=true”. For the string produced from `srvString`, it also must not contain the substrings “;authenticate=false” and “;authorize=true”.

Additionally, the string produced from either rules, `srvString` or `cliString`, also must not contain one of the params (name, ...) repeated more than once. This constraint is being specified here since ABNF does not contain a rule that would achieve the desired functionality.

12.5 Authentication

To authenticate a client or server in OBEX, the client and server must share a secret or password. This password is never actually sent or exchanged as part of the OBEX authentication procedure. If the client wishes to authenticate the server, the client sends an authentication challenge header to the server. The authentication challenge header contains a 16-byte challenge. When the server receives this header, it determines the correct password or shared secret. The server then combines the password with the challenge and applies the MD5 hash algorithm. The resulting hash, called the response digest, is sent in the authentication response header. When the client receives the authentication response header, it must determine what the shared secret or password is. The client then combines the challenge it sent in the authentication challenge header with the correct password. The MD5 hash algorithm is then applied. The resulting digest is compared to the digest received in the authentication response header. If they are the same, the server has been authenticated. The process is similar if the server wishes to authenticate the client.

In this API, the authentication process is started by a call to `createAuthenticationChallenge()`. This method tells the implementation to include an authentication challenge header in the next request or reply. This method allows the application to provide a description of the password that should be used, the type of access that will be granted and whether or not a user name is needed. The implementation will generate the challenge.

To facilitate the authentication process in this API, the `Authenticator` interface provides methods that may be implemented by an application to respond to authentication challenges and authentication response headers. The `onAuthenticationChallenge()` method is called when an authentication challenge header is received. It provides the description (or realm as it is called in [6]), along with some additional information. The challenge is not provided to the application. Instead, the application is expected to provide the correct user name (if needed) and password via a `PasswordAuthentication` object by returning this object from the `onAuthenticationChallenge()` method. The OBEX API implementation then combines the challenge it received with the password, applies the MD5 hash algorithm and sends the resulting hash in the authentication response header.

When an authentication response is received, the `onAuthenticationResponse()` method is called with the user name, if provided in the authentication response header. The application then must determine what the correct password or shared secret is and return the password from the `onAuthenticationResponse()` method. The OBEX API implementation combines the password returned with the challenge sent in the authentication challenge header and applies the MD5 hash algorithm. The implementation then compares the response digest received in the authentication response header and the hash just produced. If the values are not equal and the authentication request was generated by an OBEX client by a call to `connect()`, `setPath()`, `delete()`, `get()`, `put()`, or `disconnect()`, then an `IOException` is thrown by the method. Alternatively an OBEX client may

generate the authentication request by calling `createAuthenticationChallenge()` on a `HeaderSet` object which is then passed to an `Operation` object via its `sendHeaders()` method. If the values are not equal, an `IOException` will be thrown after any subsequent calls to either the `Operation` object or any streams constructed by the same `Operation` object. If the values are not equal for an OBEX server, the `onAuthenticationFailure()` method will be called on the server's `ServerRequestHandler`. An `IOException` will be thrown after any subsequent calls by the server to either the `Operation` object associated with this OBEX connection or any streams constructed by the same `Operation` object.

12.6 OBEX Classes

The following sections provide a brief overview of the classes used in the OBEX API. The specification of the classes and methods are found in Appendix D.

12.6.1 interface `javax.obex.ClientSession` extends `javax.microedition.io.Connection`

This interface represents a client-side connection object for OBEX. It provides methods for the `CONNECT`, `DISCONNECT`, `SETPATH`, `PUT-DELETE`, `CREATE-EMPTY`, `PUT` and `GET` operations.

12.6.2 interface `javax.obex.HeaderSet`

This interface defines the OBEX headers that may be set in an operation. It provides `get` and `set` methods for all OBEX headers. Clients can create a `HeaderSet` object by calling `createHeaderSet()` in the `javax.obex.ClientSession` object. A server receives a `HeaderSet` object through its event handler.

12.6.3 class `javax.obex.ResponseCodes`

This class defines the valid response codes for an OBEX server.

12.6.4 class `javax.obex.ServerRequestHandler`

This class defines the framework for handling requests from an OBEX client. The application that extends this class needs to override only those methods for the client requests that it supports.

12.6.5 interface `javax.obex.SessionNotifier` extends `javax.microedition.io.Connection`

This interface defines the server session notifier object that is returned following a call to `Connector.open()` for server connections. It provides methods to wait for a client to establish a transport-layer connection.

12.6.6 interface `javax.obex.Operation` extends `javax.microedition.io.ContentConnection`

This interface defines an operation object that is used for PUT and GET operations. OBEX operations continue automatically without application involvement as packets are read and written by the implementation. This interface also provides a method to ABORT the current operation.

12.6.7 interface `Authenticator`

This interface handles authentication challenge and authentication response headers.

12.6.8 class `PasswordAuthentication`

This class encapsulates a user name and password used for authentication.

12.7 Example Code

This section contains sample code for a client and a server that use the OBEX API to perform CONNECT and GET operations.

12.7.1 Client Application

```
import java.lang.*;
import java.io.*;
import javax.obex.*;
import javax.microedition.io.*;

/**
 * This is a sample application that uses the OBEX API
 * defined in this chapter to CONNECT and then GET the server's
 * vCard.
 */
public class OBEXClient {
```

```

public static void main(String[] args) {
    ClientSession conn = null;
    StreamConnection file = null;

    // Connect to the server
    try {
        conn = (ClientSession)
            Connector.open("tcpobex://12.123.155.12:5005");
    } catch (IOException e) {
        System.out.println("Unable to connect to server");
        return;
    }

    // Issue a CONNECT command to connect to the OBEX
    // server
    try {
        HeaderSet response = conn.connect(null);
        if (response.getResponseCode() !=
            ResponseCodes.OBEX_HTTP_OK) {
            System.out.println("Request Failed");
            conn.close();
            return;
        }
    } catch (IOException e) {
        System.out.println("Transport failed");
        return;
    }

    // Issue a GET command to the OBEX server and
    // write the object to a file
    try {
        // Set the name of the object to retrieve
        HeaderSet head = conn.createHeaderSet();
        head.setHeader(HeaderSet.TYPE, "text/vCard");

        // Issue the request
        Operation op = conn.get(head);

        // Get the correct streams to process the request
        InputStream in = op.openInputStream();

        // Create a buffer to store the data in
        ByteArrayOutputStream outBuf =
            new ByteArrayOutputStream();

```

```

        // Read and write the data
        int data = in.read();
        while (data != -1) {
            outBuf.write((byte)data);
            data = in.read();
        }

        //Get the name of the file
        String fileName = (String)head.getHeader(HeaderSet.NAME);
        if ((fileName == null) || (fileName.equals("")) {
            in.close();
            op.close();
            throw new IOException("No File Name was Specified");
        }

        // Open the file to write to
        head = op.getReceivedHeaders();
        file = (StreamConnection)Connector.open(fileName);
        OutputStream out = file.openOutputStream();

        // Write the data to the file
        out.write(outBuf.toByteArray());

        // End the operation
        out.close();
        file.close();
        outBuf.close();
        in.close();
        op.close();

        // DISCONNECT from the server
        conn.disconnect(null);
    } catch (IOException e) {
        System.out.println("Unable to read/write file");
        System.out.println("IOException: " + e.getMessage());
    } finally {
        // Close the transport layer connection
        try {
            conn.close();
        } catch (Exception e) {
        }
    }
}
}
}

```

12.7.2 Server Application

```

import java.lang.*;
import java.io.*;
import javax.obex.*;
import javax.microedition.io.*;

/**
 * Create a server that will respond to GET requests for the
 * default vCard.
 */
public class OBEXServer extends ServerRequestHandler{

    public OBEXServer() {
    }

    public static void main(String[] args) {
        SessionNotifier notify = null;

        try {
            notify = (SessionNotifier)
                Connector.open("tcpobex://:5005");
        } catch(IOException e) {
            System.out.println("Unable to create notifier");
            return;
        }

        // Process each request
        for (;;) {
            try {
                // Wait for a client to connect
                Connection server =
                    notify.acceptAndOpen(new OBEXServer());
            } catch (IOException e) {
                System.out.println("Transport Error");
            }
        }
    }

    public int onGet(Operation op) {
        try {
            // Get the type of object that is being
            // requested

```

```

HeaderSet head = op.getReceivedHeaders();
String type = (String)
    head.getHeader(HeaderSet.TYPE);

// Determine if it is a vCard or not
if ((type == null) ||
    (!type.equals("text/vCard"))) {
    return
        ResponseCodes.OBEX_HTTP_FORBIDDEN;
}

DataOutputStream out =
    op.openDataOutputStream();

// Open the file to read
InputConnection conn = (InputConnection)
    Connector.open("file://BobSmith.vcd");

// Return the name of the vCard
head = createHeaderSet();
head.setHeader(HeaderSet.NAME,
    "BobSmith.vcd");
op.sendHeaders(head);

// Read from the file
DataInputStream in =
    conn.openDataInputStream();
int data;
while ((data = in.read()) != -1) {
    out.write((byte)data);
}

// Close the open connections
in.close();
out.close();
op.close();
return ResponseCodes.OBEX_HTTP_OK;
} catch (IOException e) {
    return ResponseCodes.OBEX_HTTP_INTERNAL_ERROR;
}
}
}

```


APPENDICES

This document, *Java APIs for Bluetooth Wireless Technology (JSR 82)*, contains the following appendices:

- Appendix A : JSR 82 & MIDP 2.0 PushRegistry
- Appendix B : Table of which JSR 82 methods are blocking versus non-blocking

Appendix A - JSR 82 & MIDP 2.0 PushRegistry

A.1 Introduction

This appendix contains requirements for implementations that support JSR 82 (Java APIs for Bluetooth) connect-anytime services using the JSR 118 MIDP 2.0 [5] PushRegistry. This appendix does not cover non-Bluetooth OBEX connections, i.e. connections initiated using URLs that start from “irdaobex://” or “tcpobex://”.

A.2 PushRegistry Registration Parameters

This section defines the format of parameters for static and dynamic registration of Bluetooth connections in the PushRegistry. These parameters are `ConnectionURL`, `MIDletClassName` and `AllowedSender`. During static registration these parameters are taken from the JAD file or from the JAR manifest; the attribute name is `MIDlet-Push-<n>`. In the case of dynamic registration, these parameters are passed to the `PushRegistry.registerConnection()` method.

Support for JSR 82 Bluetooth connections does not exert any influence on the `MIDletClassName` parameter; it MUST be used according to the MIDP 2.0 specification. Requirements regarding the allowed values of the two other parameters are listed in the next two sections.

A.2.1 ConnectionURL Parameter

A value passed as the `ConnectionURL` parameter MUST comply with one of JSR 82 Bluetooth server connection URL formats defined in the JSR 82 specification. A JSR 82 Bluetooth API implementation MUST support registration of L2CAP and SPP server URLs. A JSR 82 OBEX API implementation that supports OBEX over RFCOMM MUST also support registration of OBEX over RFCOMM server URLs. In the case of static registration, the MIDP 2.0 specification states that if the value of the `ConnectionURL` parameter does not comply with any of the supported formats, the MIDlet suite MUST NOT be installed. If an incorrect value of the `ConnectionURL` parameter is encountered during dynamic registration, the `PushRegistry.registerConnection()` method MUST throw `IllegalArgumentException`.

Here are examples of correct values of the `ConnectionURL` parameter (for L2CAP, SPP and OBEX over RFCOMM, respectively):

```
btl2cap://localhost:3B9FA89520078C303355AAA694238F08;name=Aserv
btsp://localhost:3B9FA89520078C303355AAA694238F08
btgoep://localhost:3B9FA89520078C303355AAA694238F08
```

A.2.2 AllowedSender Parameter

The `AllowedSender` filter is applied to the Bluetooth address and security status (authenticated or authorized) of the device that originates the connection. The MIDP 2.0 specification demands support for wildcard characters “*” and “?”. In addition, Bluetooth specific filtering features such as blacklisting are supported. Filtering happens in two stages. First, the connecting device has to pass the optional blacklist filter, and then the conventional filter.

The AllowedSender filter string MUST conform to the following Augmented Backus-Naur Form (ABNF) :

```

filter = directfilter / directfilter blacklist
directfilter = address / address authenticated / address
authorized
address = 1*12 (HEXDIG / "?" / "**")
blacklist = blacklistword list
blacklistword = ";blacklist="
list = 0*1023 (address semicolon) address
semicolon = ";"
authenticated = ";authenticated"
authorized = ";authorized"
According to RFC 2234 HEXDIG stands for hexadecimal digits (0-9,
a-f, A-F).

```

Here are some examples of a correct AllowedSender filter string :

```

*;blacklist=00E00379A123
*;authenticated;blacklist=00E00379A*
*E00379A???;authorized;blacklist=?*E003*;00E00379A123

```

Filtering MUST happen as follows:

1. If the blacklist part is present in the AllowedSender filter string, the Bluetooth address of the connecting device is blindly matched against all Bluetooth addresses that follow the "blacklist" keyword. Note that addresses in the list can contain wildcard symbols "?" and "*". In case of any matches, the connecting device is considered to fail to pass the filter and requirements from Section A.10.1 apply. If there were no matches or if the blacklist part was not present in the filter string, filtering process continues as described in the next step.
2. A String that identifies the connecting entity is constructed. Thereto the Bluetooth address of the connecting device can be supplemented with ";authenticated" or ";authorized". The rules are as follows : if the connecting device is in the list of authorized devices (the list is maintained by the BCC), then ";authorized" MUST be added. If the device is not in the list of authorized devices, then the list of authenticated devices (also stored by the BCC) is checked. If the device is in the list, ";authenticated" MUST be added. If the device is not present in these lists, the string MUST contain just the Bluetooth address of the connecting device. Examples of valid stings that identify connecting devices are :

```

00E00379A156;authenticated
00E00379A123;authorized
00E00379A112

```

Here is the Augmented Backus-Naur Form (ABNF) for a string that identifies a connecting device :

```

filter = address / address authenticated / address
authorized
address = 12*12(HEXDIG)
authenticated = ";authenticated"

```

```
authorized = ";authorized"
According to RFC 2234 HEXDIG stands for hexadecimal digits
(0-9, a-f, A-F).
```

3. The string that was constructed in the previous step is matched against the value of the AllowedSender filter. In here, the blacklist part of the AllowedSender filter string (if present) does not participate in matching. For example :

```
AllowedSender filter string:      *;authenticated;blacklist=00E00379A123
```

```
String used for matching:        *;authenticated
```

```
String that identifies the initiator: 00E00379A156;authenticated
```

4. If the string representing the connecting device matches the filter string (without the blacklist part), the device **MUST** be considered to pass the filter. In this case the connection is accepted (if there are no other reasons to reject the connection, see, e.g., Section A.10.2). If the connecting device fails to pass the filter, requirements from Section A.10.1 apply.

As can be seen from the AllowedSender filter's ABNF, a filter string that has more than 26 characters in its first part (characters in the blacklist part are not counted) does not make sense as such a string is longer than the longest possible string representing a connection initiator. If such an incorrect filter is used during static registration, a MIDlet suite **MUST NOT** be installed. If an incorrect AllowedSender filter is used during dynamic registration, the `PushRegistry.registerConnection()` method **MUST** throw `IllegalArgumentException`.

A.3 Registration Rules

It is not possible to register a Bluetooth connection in the PushRegistry (statically or dynamically) using the same value of the `ConnectionURL` parameter more than once within the JAM. An implementation **MUST** prevent registration (static or dynamic) of a Bluetooth connection, if another Bluetooth connection registered using the same value of the `ConnectionURL` parameter (by the same or another suite) is already in the PushRegistry.

Two values of the `ConnectionURL` parameter are the same from the registration point of view, if they share the same protocol scheme and UUID. For example., the following two URLs are considered equal and cannot be registered together :

```
"btspp://localhost:3B9FA89520078C303355AAA694238F08;name=ABC"
"btspp://localhost:3B9FA89520078C303355AAA694238F08"
```

Conversely, the two URLs below can be registered at the same time, by one MIDlet suite or by different MIDlet suites :

```
"bt12cap://localhost:3B9FA89520078C303355AAA694238F08"
"btspp://localhost:3B9FA89520078C303355AAA694238F08"
```

During static registration, if it is not possible to register a Bluetooth connection, because the same connection is already in the PushRegistry, a MIDlet suite **MUST NOT** be installed.

During dynamic registration, if it is not possible to register a Bluetooth connection, because the same connection is already in the PushRegistry, `java.io.IOException` **MUST** be thrown.

During static registration, if a Bluetooth URL being registered contains optional parameters not supported by an implementation, a suite **MUST NOT** be installed. Similarly, if during dynamic registration a Bluetooth URL contains any unsupported parameters, the connection **MUST NOT** be registered and `java.io.IOException` **MUST** be thrown by the `PushRegistry.registerConnection()` method.

After successful registration (static or dynamic), a Bluetooth URL that was used for registration (i.e. the content of the `ConnectionURL` field in the JAD or the value of the first parameter of the `PushRegistry.registerConnection()` method) **MUST** be stored in the `PushRegistry` without any changes, with all optional parameters. The `PushRegistry.listConnections()` method **MUST** return this URL without any changes, with all optional parameters.

A dynamic or static registration attempt can happen when Bluetooth is switched OFF. In this situation an implementation (of Bluetooth API or OBEX API) **MUST** at least notify the user that an application is trying to perform an operation that requires the activation of Bluetooth. Further, an implementation **SHOULD** prompt the user whether Bluetooth has to be switched ON. If the user approval is granted, Bluetooth **MUST** be activated. If the user denies the approval, Bluetooth **MUST NOT** be switched ON and (in case of dynamic registration) `PushRegistry.registerConnection()` **MUST** fail.

The behavior when Bluetooth is OFF during static registration is implementation dependent. This is because in certain native Bluetooth stacks, some features required for static registration (e.g. registration of a service record in the SDDB) may be unavailable when Bluetooth is OFF. However, if an implementation performs a static registration while Bluetooth is OFF, a registered Bluetooth connection **MUST** be fully operational once Bluetooth is finally switched ON (i.e., remote devices can auto-start the MIDlet by connecting to the registered end-point).

Also, a static registration attempt can happen when Bluetooth discoverability mode is something other than “visible to all” (GIAC). In this situation, an implementation (of Bluetooth API or OBEX API) **MUST** notify the user that the current Bluetooth discoverability mode prevents other devices from discovering the local device. Further, the implementation **SHOULD** prompt the user whether Bluetooth discoverability mode has to be changed to “visible to all” (GIAC). If the user approval is granted, the implementation **MUST** change the mode. If the user denies the approval, the mode **MUST NOT** be changed.

A.4 Opening of Registered Bluetooth Connections by MIDlets

A.4.1 By MIDlets Belonging to Same MIDlet Suite

A first call to `Connector.open()` with literally the same Bluetooth URL as was used for registration, **MUST** return the connection from the `PushRegistry`. According to the JSR 82 specification, if the MIDlet will then invoke `LocalDevice.getRecord()` with the `Connection` object returned by `Connector.open()`, a `ServiceRecord` whose contents match those of the corresponding service record in the SDDB **MUST** be returned.

Subsequent calls to `Connector.open()` with literally same Bluetooth URL as was used for registration **MUST** be allowed. However, `Connection` objects returned by these calls **MUST** represent

new connections, and new `ServiceRecord` objects **MUST** be created for each such call (as defined by this specification).

Additional requirements regarding opening of registered Bluetooth connections by MIDlets can be found in Section A.12.

A.4.2 By MIDlets Belonging to Other MIDlet Suites

In accordance with to the MIDP 2.0 specification, an implementation reserves each registered Bluetooth connection for the exclusive use of MIDlets from a MIDlet suite that has registered the connection. While this suite is installed on the device, any attempt by MIDlets from other suites to open a reserved connection **MUST** fail with `java.io.IOException`. A call to `Connector.open()` **MUST** be considered an attempt to open a reserved connection, if a URL passed to the method is literally the same as the URL that is already in the `PushRegistry`.

A.5 Removal of Bluetooth Connection from PushRegistry

A Bluetooth connection **MUST** be removed from the `PushRegistry` in the following two cases:

1. A MIDlet suite that has registered the Bluetooth connection is uninstalled.
2. A MIDlet belonging to the same suite as a MIDlet that has registered the connection removes the Bluetooth connection from the `PushRegistry` using the `PushRegistry.unregisterConnection()` method. A URL passed to `PushRegistry.unregisterConnection()` **MUST** be exactly the same as returned from the `PushRegistry.listConnections()` method.

Note: conditions for removal of service records corresponding to registered Bluetooth connections can be found in section A.6.4.

A.6 SDP Service Record of Registered Bluetooth Connection

A.6.1 Creation and Placement to SDDB

When a MIDlet suite registers a Bluetooth connection in the `PushRegistry`, a service record is created based on the JSR 82 server URL being registered. The JSR 82 specification describes how a minimal service record is created for all types of Bluetooth server URLs. Service records created as a result of registration in the `PushRegistry` (static or dynamic) **MUST** be created according to the same pattern. In the case of static registration, the service record **MUST** be in the SDDB and the JAM **MUST** start listening for incoming connections when the installation of the suite is complete. In the case of dynamic registration, the service record **MUST** be placed to the SDDB before the `registerConnection()` method returns. Note that in case of dynamic registration the JAM **MUST NOT** start to listen to the registered connection immediately, but rather after MIDlet termination (see Section A.9, where exact rules for the JAM behavior are defined).

If, for some reason, it is not possible to create a service record or to place it to the SDDB, then registration (static or dynamic) **MUST** fail. In case of static registration, a MIDlet suite **MUST NOT** be installed and an informative error message **MUST** be shown to the user. In case of dynamic registration `javax.bluetooth.ServiceRegistrationException` **MUST** be thrown by the `PushRegistry.registerConnection()` method.

A.6.2 Update

Push service records (i.e. service records that were placed to the SDDB as a result of registration of a Bluetooth connection in the PushRegistry) **MUST** be updated in the same way as defined by the JSR 82 specification for any service record. Changes made to a push service record by a MIDlet **MUST** remain valid after termination of a MIDlet. If any service class bits were activated, values of these bits **MUST** also be preserved after MIDlet's termination.

The example below illustrates how an update of a push service record happens :

```
StreamConnectionNotifier notifier;
StreamConnection con;
String[] url = PushRegistry.listConnections(false);

notifier = (StreamConnectionNotifier)Connector.open(url[0]);
// service record is retrieved from the SDDB

LocalDevice ld = LocalDevice.getLocalDevice();
// LocalDevice object is obtained

ServiceRecord sr = ld.getRecord(notifier);
// ServiceRecord object is obtained

...

// service record is modified, service class bits are set
...

ld.updateRecord(sr);
// updated record is placed to the SDDB,
// service class bits are set
```

The key point in the code above is a call to `Connector.open()`. An implementation understands that the corresponding service record is already in the SDDB, and fetches it instead of creating a new one. This happens if the Bluetooth URL passed to `Connector.open()` is literally the same as was registered in the PushRegistry by the suite to which the MIDlet belongs.

Note that a MIDlet can make changes to a push service record such that its contents will no longer correspond to the Bluetooth URL (stored in the PushRegistry) that was used to generate the service record. This can happen in a situation when a Bluetooth URL contains the “name” optional parameter, and a MIDlet then changes a value of the “ServiceName” attribute of the service record.

Resolution of such collisions is left to an application developer; a JSR 82 implementation **MUST NOT** update a registered URL. The recommended behavior for an application in this situation is to unregister the URL, update it, register the updated URL in the PushRegistry, and then further change the resulting service record if needed.

A.6.3 Disable Conditions

A push service record **MUST** be temporarily disabled in the following case.

A MIDlet opens a Bluetooth connection that has been registered in the PushRegistry (pseudo code is used):

```
String[] url = PushRegistry.listConnections(false);
notifier = (Notifier)Connector.open(url[0]);
con = (Connection) notifier.acceptAndOpen();
```

Then it performs some processing and invokes `close()` on the notifier :

```
notifier.close();
```

Following this, the MIDlet does not exit, but continues running. In such a situation, a service record that corresponds to the notifier **MUST** be disabled until the MIDlet terminates. When the MIDlet terminates, the service record **MUST** be enabled again. Note that if there are any service class bits associated with the service record, these bits **MUST** also be temporarily deactivated, unless other services corresponding to those same bits remain active.

The implementation **MAY** also disable push service records and corresponding service class bits when it realizes that it is not possible to launch an appropriate MIDlet (e.g. when a phone call is underway, etc).

A.6.4 Removal

A service record that was added to the SDDB as a result of registration of a Bluetooth connection **MUST** be permanently removed in the following cases :

1. A MIDlet suite to which a MIDlet that has registered the Bluetooth connection belongs is uninstalled.
2. A MIDlet (belonging to the same suite as a MIDlet that has registered the connection) removes the Bluetooth connection from the PushRegistry using the `PushRegistry.unregisterConnection()` method.

In fact, a service record is permanently deleted when a corresponding Bluetooth connection is removed from the PushRegistry (see Section A.5).

Note that if there are any service class bits associated with the service record, these bits **MUST** be deactivated, unless other services corresponding to those same bits remain active.

A.7 Bluetooth Service Class Bits

An implementation (of Bluetooth API or OBEX API) **MUST NOT** change any service class bits during registration (static or dynamic) of a Bluetooth connection in the PushRegistry. If a MIDlet wants to set some service class bits, it can do so by using standard mechanisms for this procedure defined in the JSR 82 specification.

According to the JSR 82 specification, service class bits are associated with `ServiceRecord` objects. Therefore, all actions with service class bits associated with push service records **MUST** happen according to rules defined in Section A.6. That is, service class bits are updated when a push service record is updated (Section A.6.2), temporarily disabled when a push service record is disabled (Section A.6.3) and permanently disabled when a push service record is permanently removed from the SDDB (Section A.6.4).

A.8 Registration URL's Optional Parameters

A Bluetooth server URL being registered in the PushRegistry can contain the following parameters :

- master
- encrypt
- authorize
- authenticate
- receiveMTU
- transmitMTU.

These additional parameters **MUST** have the same influence on the connection establishment done by the JAM as they have on the invocation of `Connector.open()`. In other words, the JAM **MUST** associate the parameters with the service record generated based on the URL, and then **MUST** use them when establishing a connection. The precise meaning of these optional parameters can be found in the JSR 82 specification.

After a push Bluetooth connection is established, a running MIDlet can change some settings specified by optional parameters mentioned above (e.g. by using the `RemoteDevice.encrypt()` method). These changes are valid only for the given session, and the JAM **MUST NOT** use these changed settings for future connection establishments.

A.9 Acceptance of Registered Bluetooth Connections by JAM

The responsibility for acceptance of Bluetooth connections registered in the PushRegistry **MUST** be shared between the JAM and a push MIDlet according to the following rules :

- The JAM is responsible (i.e. accepts connections) when a push MIDlet is not running. Note that from the point when a push MIDlet is started, the JAM does not accept any connections registered either by this MIDlet or by other MIDlets belonging to the same MIDlet suite.
- A push MIDlet is responsible for all registered connections of the MIDlet suite from the point when it is started (or auto-started) and until it terminates. It is assumed that after a push MIDlet is started, it opens (i.e. calls `Connector.open()` and `acceptAndOpen()`) all its registered connections (and possibly connections registered by other MIDlets from the same MIDlet suite)
- After a push MIDlet terminates, the JAM resumes listening for Bluetooth connections registered by MIDlets from this MIDlet suite.

As is evident from the requirements above, if the JAM receives a notification about an incoming Bluetooth connection while an appropriate push MIDlet is already running, the JAM **MUST NOT** accept such a connection. When a MIDlet is running, it is responsible for all its push Bluetooth connections. Note that once a MIDlet is no longer interested in accepting new connections to a certain registered Bluetooth connection endpoint, it invokes `close()` on the notifier object returned by the `Connector.open()` method. From that moment, neither the JAM, nor a push MIDlet is responsible for accepting connections to the endpoint, until the MIDlet terminates; that is, any connection attempts are ignored. Note that a call to the `notifier.close()` disables the corresponding service record in the SDDB. The service record is enabled again after a push MIDlet terminates (see Section A.6.3).

Figure A9-1 illustrates the statements above for the case of one registered Bluetooth connection. Hatched rectangles symbolize zones of responsibility.

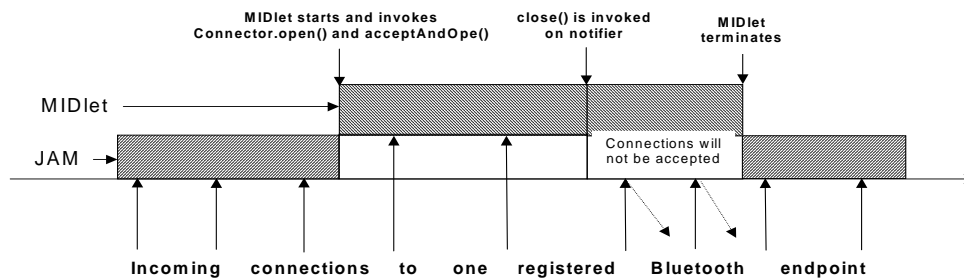


Figure A9-1 - MIDlet's and JAM's zones of responsibility for connection acceptance

A.10 Rejection of Connections to Registered Endpoint by JAM

A.10.1 Connection Initiator Fails to Pass AllowedSender Filter

If an initiator of a registered Bluetooth connection fails to pass the `AllowedSender` filter, the JAM MUST NOT accept the connection. A push MIDlet MUST NOT be launched.

A.10.2 Requests in Registered URL Cannot be Fulfilled

When accepting a registered Bluetooth connection the JAM MUST fulfill requests (master, encrypt, authorize, authenticate, receiveMTU, transmitMTU) present in the corresponding registered URL. It is done in the same manner, as if a MIDlet were invoking the `Connector.open()` with the same URL. If requests in a registered URL cannot be fulfilled, the inbound Bluetooth connection MUST NOT be accepted. A corresponding push MIDlet MUST NOT be launched.

A.11 MIDlet Auto-Invocation

A.11.1 Information in Auto-Launch Confirmation Query

When the JAM auto-launches a push MIDlet, there may be a need to ask a permission from the user (depending upon the settings of a security domain to which a given MIDlet suite belongs).

When asking a permission to launch a push MIDlet, the JAM MUST provide the user with the following information :

- The name of the MIDlet that will be started
- The friendly name of the Bluetooth device that has initiated the connection (if available). Note that friendly name is not always available.

A.11.2 Combining Several Push-Related User Interactions into One

It can happen so that while a prompt to launch a push MIDlet is still pending, another connection attempt that requires auto-launch of the same MIDlet occurs. In this case, the implementation **MUST** modify the shown prompt in a way that makes it clear to the user that there has been more than one connection attempt.

Also, when a remote device initiates a connection to a push MIDlet, three user interactions may be required:

- Bluetooth pairing
- Bluetooth authorization
- Asking a permission from the user to launch a push MIDlet

An implementation **MAY** combine the two last interactions into one.

A.11.3 “Application Auto Invocation” permission set to “Not Allowed”

This Section contains requirements for a situation where the user sets the “Application Auto Invocation” permission for a MIDlet suite to “Not Allowed” while one or MIDlets from the suite have one or more Bluetooth connections registered in the PushRegistry.

In this case the JAM **SHOULD** temporarily disable service records corresponding to Bluetooth connections registered by MIDlets from this MIDlet suite. Further, the JAM **SHOULD NOT** accept connections to these registered Bluetooth connection end-points. Once the permission is set to a different value (e.g. to “Oneshot”), the service records **SHOULD** be re-enabled and connections **SHOULD** be accepted as normal.

If, for some implementation-specific reasons, the requirements above cannot be satisfied and a connection from a remote device is accepted while a corresponding MIDlet cannot be started because of the permission setting, the implementation **MUST**, at least, disconnect the accepted connection immediately after it becomes clear that the MIDlet cannot be started. In this case, any data received through this connection **MUST** be discarded.

A.12 Interplay between Push MIDlet and JAM

Generally, it is assumed that the behavior of a MIDlet with a registered Bluetooth connection is as follows (the pseudo code below covers SPP and L2CAP and OBEX over Bluetooth connections).

As soon as the MIDlet is started (or auto-started), it opens the registered connection :

```
notifier = (Notifier)Connector.open(url);
```

Then the MIDlet enters a loop, within which it accepts the connection using `acceptAndOpen()`, communicates with the remote device, closes this accepted connection and starts waiting for another connection to the same endpoint :

```
while (interested in new connections) {
    con = (Connection) notifier.acceptAndOpen();
```

```
...
}
```

```

        // communication with the remote device
        ...
        con.close();
    }

```

As soon as the MIDlet is no longer interested in new connections to this registered endpoint it leaves the loop and closes the notifier:

```

    notifier.close();

```

New connections to this registered Bluetooth connection endpoint are now not possible. Accordingly, the requirements are as follows. After a push MIDlet opens a registered connection (using the `Connector.open()` as defined in Section A.4.1), the implementation's behavior is as described below.

If the registered Bluetooth connection has already been accepted by the JAM, the `acceptAndOpen()` method **MUST** immediately return an object corresponding to the accepted connection. If the registered Bluetooth connection was not accepted yet, the `acceptAndOpen()` method **MUST** block until a connection to this endpoint arrives (as it normally happens when the `PushRegistry` is not supported). In the latter case the `AllowedSender` filter that is associated with this registered connection **MUST NOT** be used to filter connection initiators.

In cases where the connection has already been accepted by the JAM, two variants are possible:

- The accepted connection is still active. This connection **MUST** be returned to the MIDlet and it can start communicating with the remote device.
`PushRegistry.listConnections(true)` **MUST** return the accepted connection as active.
- The accepted connection has been lost before the MIDlet opened it.
`PushRegistry.listConnections(true)` **MUST** return such lost connection as active. It can happen that some data had been received through the connection before it was lost (the data had been then buffered according to requirements from Section A.13 of the present specification). In this case the implementation **MUST** make the data from this lost connection available to the MIDlet. The MIDlet can access the data by calling `acceptAndOpen()` and reading the data, as shown above in this Section. After the MIDlet reads all buffered data from the lost connection (or if there were no data), any further operations on this connection that require communication with the remote device **MUST** result in `java.io.IOException` being thrown. Exceptions to this rule are `close()` operations, e.g. invocation of the `close()` method on the `Connection` object returned from `acceptAndOpen()`.

It can happen that before a push MIDlet is started, several connections to a registered endpoint were accepted by the JAM. These connections **MUST** be delivered to a push MIDlet according to the rules above and in the same order in which the connections occurred (FIFO). In here, whatever the number of accepted connections to the same endpoint is, `PushRegistry.listConnections(true)` **MUST** return a URL corresponding to this endpoint only once.

If a push MIDlet invokes `close()` on an object returned from `Connector.open()`, all connections to this endpoint that were accepted by the JAM **MUST** be discarded (both active ones and those that were lost). In the case of lost connections, all the buffered data **MUST** be deleted (see Section A.13).

Here is an example that illustrates the requirements above:

Before a push MIDlet was auto-launched, the JAM had accepted three connections to a certain registered Bluetooth connection endpoint (connections had been accepted in the same order as they are described):

- Connection A was accepted and then lost, but some data was received
- Connection B was accepted and is still active
- Connection C was accepted and then lost and left no data

When the push MIDlet starts, it opens this registered connection (`Connector.open()`). The MIDlet proceeds with calling `acceptAndOpen()` and receives an object representing Connection A. The MIDlet is now able to read the buffered data received through this connection. After all the data is read, the MIDlet closes Connection A and calls the `acceptAndOpen()` again. Now an object representing Connection B is returned and the MIDlet is able to communicate with the remote device. After the MIDlet closes this connection, the third call to `acceptAndOpen()` returns an object representing Connection C. However, any attempt by the MIDlet to communicate with the remote device using this object will result in an exception, since the connection was lost and no data were buffered. After the MIDlet closes Connection C, the next call to the `acceptAndOpen()` blocks, as there are no more accepted connections.

Note that this example assumes that at any given point in time, only one connection to a registered endpoint is allowed. This is not always true, e.g., in case of RFCOMM, a Bluetooth API implementation may support several simultaneous connections to the same endpoint. In this situation, the only difference to the example above is that a push MIDlet does not need to call `close()` on the `Connection` before calling `acceptAndOpen()` again.

Figure A12-1 illustrates the interplay between a push MIDlet and the implementation when opening a registered Bluetooth connection. Note that Figure A12-1 also assumes that only one connection to a given Bluetooth connection endpoint at a time is allowed. If this is not true, the only difference is that a MIDlet does not need to close the previous connection (`connection.close()`) before accepting the next one (`notifier.acceptAndOpen()`).

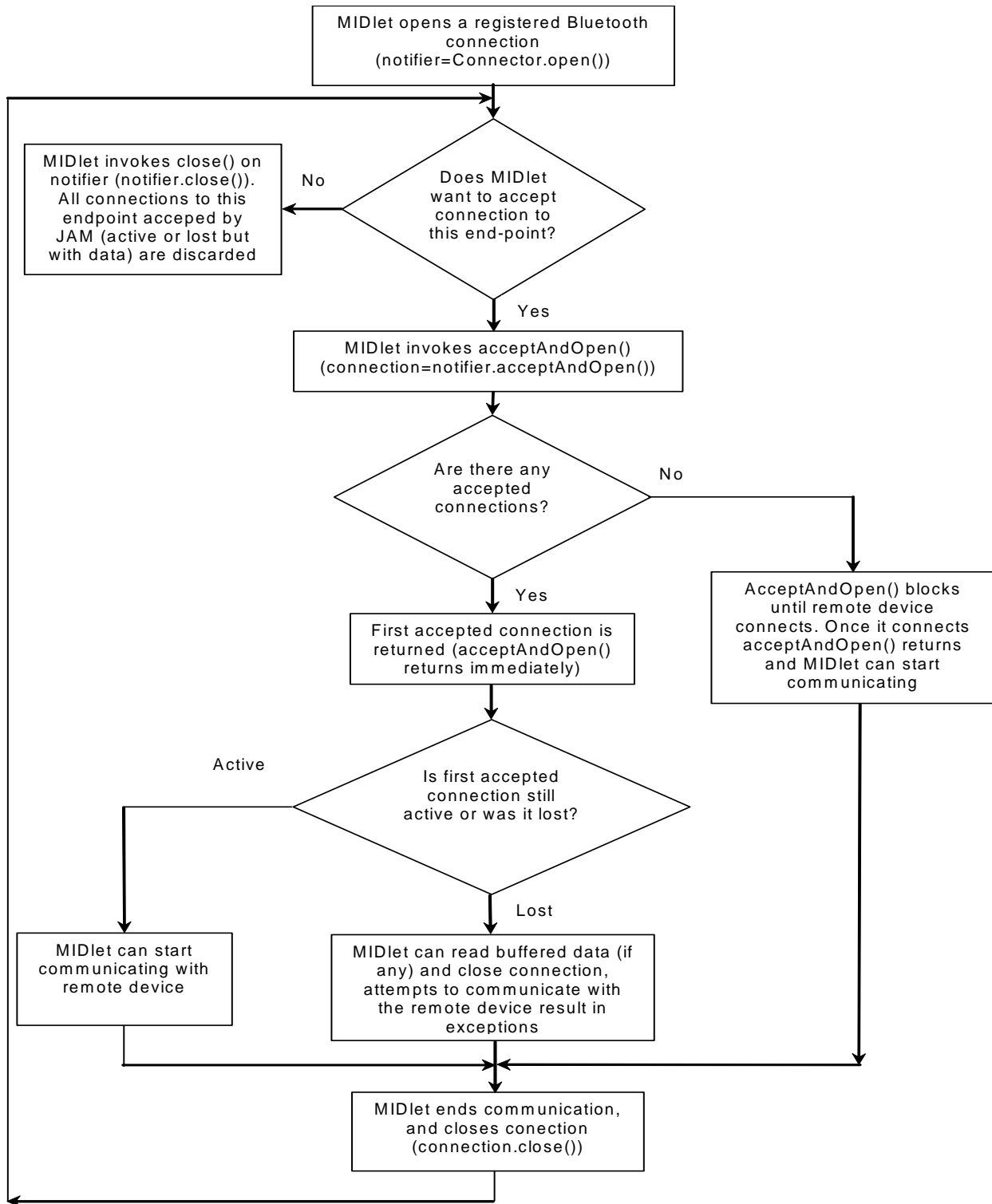


Figure A12-1 - Opening of registered Bluetooth connection

A.13 Buffering of Data by JAM

This section contains requirements on buffering of data received from connections to registered Bluetooth connection endpoints by the JAM.

As a connecting side does not have to be aware of the push feature, a remote device can generally assume that once a Bluetooth connection is accepted, a MIDlet on the other side is up and running and communication can start. Therefore, a remote device can start sending data immediately after a push connection is accepted by the JAM. Furthermore, if a remote device intends to send just a small chunk of data (and also for other reasons, such as leaving the Bluetooth range), it can often happen that a push connection is closed before a push MIDlet is started. In order to deliver these received data to a push MIDlet, the following buffering rules were devised.

The JAM **MUST** buffer data received from an accepted Bluetooth push connection. The size of the buffer is implementation dependent, and if a remote device overflows the buffer, an implementation **MUST** use relevant Bluetooth mechanism to communicate this fact to the remote device.

If, after some data were received from a remote device, the connection is closed by the remote device (or lost) and a corresponding push MIDlet is still not running, the JAM **MUST** start listening for the same push connection again. All successive connections to this connection endpoint **MUST** be handled in the same fashion as the first one. In this case, separate buffers **MUST** be used for data received from different connection sessions.

The Bluetooth API implementation **MUST** keep buffered data until a push MIDlet will read it, or until one of the conditions below is fulfilled.

A Bluetooth push buffer related to a certain accepted connection to a registered Bluetooth connection endpoint **MUST** be cleared if :

- MIDlet accepts (`connection = notifier.acceptAndOpen()`) and then closes (`connection.close()`) the connection.

All Bluetooth push buffers related to a certain registered Bluetooth connection endpoint **MUST** be cleared if :

- Connection endpoint is removed from the PushRegistry

All Bluetooth push buffers related to all registered Bluetooth connection endpoints registered by a certain push MIDlet **MUST** be cleared if :

- The push MIDlet is uninstalled from the mobile device

Finally, all Bluetooth push buffers in the mobile device **MAY** be cleared when the mobile device is switched off.

Appendix B – Blocking/Non-Blocking Methods

Bluetooth API

Method	Blocking/Non-blocking	Return Condition
L2CAPConnection.receive()	Blocking	New data packet received
L2CAPConnection.send()	Non-blocking	Data queued for sending

OBEX API

Method	Blocking/Non-blocking	Return Condition
ClientSession.connect()	Blocking	Response received from server
ClientSession.delete()	Blocking	Response received from server
ClientSession.disconnect()	Blocking	Response received from server
ClientSession.get()	Blocking	Response received from server
ClientSession.put()	Blocking	Response received from server
ClientSession.setPath()	Blocking	Response received from server
Operation.abort()	Blocking	Abort message sent

Note that in case of errors, all of the methods above throw exceptions as defined in their respective method descriptions.

References

- [1] Specification of the Bluetooth System, Core, v1.1, <http://www.bluetooth.org/spec>
- [2] Specification of the Bluetooth System, Profiles v1.1, <http://www.bluetooth.org/spec>
- [3] J2ME Connected, Limited Device Configuration (JSR 30), Sun Microsystems, Inc.
<http://www.jcp.org/jsr/detail/30.jsp>
- [4] J2ME Connected Device Configuration (JSR 36), Sun Microsystems, Inc.
<http://www.jcp.org/jsr/detail/36.jsp>
- [5] Mobile Information Device Profile for the J2ME Platform (JSR 118), Sun Microsystems, Inc.
<http://www.jcp.org/jsr/detail/118.jsp>
- [6] IrDA Object Exchange Protocol Specification (IrOBEX),
<http://www.irda.org/standards/specifications.asp>
- [7] Bluetooth Assigned Numbers, <http://www.bluetooth.org/>
- [8] Infrared Data Association Link Management Protocol (IrLMP), v1.1,
<http://www.irda.org/standards/specifications.asp>
- [9] IrLMP Hint Bit Assignments and Known IAS Definitions (IRDAIAS), Ver 1.0, IrDA
- [10] Key words for use in RFCs to Indicate Requirement Levels, RFC 2119,
<http://www.ietf.org/rfc/rfc2119.txt?number=2119>
- [11] Augmented BNF for Syntax Specifications: ABNF, RFC 2234,
<http://www.ietf.org/rfc/rfc2234.txt?number=2234>